



# EOS DIGITAL Software

**EOS Viewer Utility**

**Windows**

**EOS Capture**

**Macintosh**

**PhotoStitch**

## Compatible Models

**EOS 20D**

**EOS 10D**

**EOS DIGITAL REBEL**

**EOS 300D DIGITAL**

**EOS D60**

**EOS D30**

**E**

**INSTRUCTION  
MANUAL**

# READ CAREFULLY BEFORE USING!

## CANON SOFTWARE LICENSE AGREEMENT

IMPORTANT - READ THIS AGREEMENT BEFORE USING THE SOFTWARE ON THE CD-ROM IN THIS BOX. BY USING THE SOFTWARE, YOU AGREE TO BE BOUND BY THE TERMS OF THIS AGREEMENT.

This is a license agreement (the [Agreement]) between you and Canon Inc. ([Canon]).

IF YOU DO NOT AGREE TO THE TERMS AND CONDITIONS OF THIS AGREEMENT, DO NOT USE THE SOFTWARE PROGRAM ON THE CD-ROM AND THE USER MANUAL IN THIS BOX (COLLECTIVELY, THE [SOFTWARE]) AND RETURN THE SOFTWARE WITHIN 30 DAYS FROM THE DATE OF PURCHASE TO YOUR POINT OF PURCHASE FOR A REFUND.

In consideration of the right to use the SOFTWARE, you agree to abide by the terms and conditions of this Agreement.

1. LICENSE: Canon grants you the non-exclusive right to use the SOFTWARE only on a single computer. You may physically transfer the SOFTWARE from one computer to another provided that the SOFTWARE is used on only one computer at a time. You shall not install or use the SOFTWARE on a network, multiple CPU, multiple site arrangement, or any other hardware configuration where the SOFTWARE is accessible to more than one CPU or to more than one user.

YOU SHALL NOT ASSIGN, SUBLICENSE, RENT, LEASE, LOAN, CONVEY OR OTHERWISE USE, TRANSFER, COPY, TRANSLATE, CONVERT TO ANOTHER PROGRAMMING LANGUAGE, ALTER, MODIFY, DECOMPILE OR DISASSEMBLE THE SOFTWARE, IN WHOLE OR IN PART, EXCEPT AS EXPRESSLY PROVIDED IN THIS AGREEMENT.

2. BACK-UP COPY: You may make one copy of the SOFTWARE solely for back-up purposes, or copy the SOFTWARE onto the permanent storage device (e.g. a hard disk) of your computer and retain the original for back-up purposes. Any other copying of the SOFTWARE is a violation of this Agreement. You must reproduce and include the copyright notice on the back-up copy.
3. SUPPORT AND UPDATES: Canon is not responsible for providing maintenance or support for use of the SOFTWARE. No updates, fixes or support will be made available for the SOFTWARE.
4. LIMITED WARRANTY AND LIMITATION OF LIABILITY: It is your responsibility to choose, maintain and match the hardware and software components of your computer system. Thus Canon does not guarantee uninterrupted service or correction of errors or that the functions or performance of the SOFTWARE will meet your requirements. THE SOFTWARE IS LICENSED ON AN [AS IS] BASIS AND WITHOUT WARRANTY OF ANY KIND. The CD-ROM storing the SOFTWARE is warranted only against defective material under normal use for a period of ninety (90) days after purchase from an authorized Canon dealer as evidenced by your sales receipt. Your sole remedy for a defective CD-ROM shall be replacement of the same without charge when returned by you at your expense to your point of purchase and proven to be defective upon inspection. The replacement CD-ROM will be warranted for the remainder of the original ninety (90) day warranty period of the defective CD-ROM. The limited warranty does not apply if the failure of the CD-ROM resulted from accident, abuse or misapplication of the SOFTWARE and shall not extend to anyone other than the original user of the SOFTWARE.

EXCEPT AS SPECIFICALLY SET FORTH IN THIS PARAGRAPH 4, CANON, CANON'S SUBSIDIARIES, DISTRIBUTORS AND DEALERS DISCLAIM ALL WARRANTIES, EXPRESS OR IMPLIED, INCLUDING ANY WARRANTY OF MERCHANTABILITY OR FITNESS FOR A PARTICULAR PURPOSE, WITH RESPECT TO THE SOFTWARE.

NEITHER CANON NOR ANY OF CANON'S SUBSIDIARIES, DISTRIBUTORS OR DEALERS IS LIABLE FOR ANY DAMAGES HOWSOEVER CAUSED, INCLUDING WITHOUT LIMITATION, DIRECT, CONSEQUENTIAL OR INCIDENTAL LOSS OR DAMAGE INCLUDING LOSS OF PROFITS, EXPENSE OR INCONVENIENCE HOWSOEVER CAUSED OR ARISING OUT OF THE SOFTWARE OR THE USE THEREOF.

NEITHER CANON, NOR ANY OF CANON'S SUBSIDIARIES, DISTRIBUTORS OR DEALERS SHALL HAVE ANY OBLIGATION TO INDEMNIFY YOU AGAINST ANY CLAIM OR SUIT BROUGHT BY A THIRD PARTY ALLEGING THAT THE SOFTWARE OR THE USE THEREOF INFRINGES ANY INTELLECTUAL PROPERTY OF SUCH THIRD PARTY.


5. **TERM:** This Agreement is effective upon your using the SOFTWARE and remains in effect until expiration of all copyright interests in the SOFTWARE unless earlier terminated. You may terminate this Agreement by destroying the SOFTWARE. This Agreement will also terminate without notice to you if you fail to comply with any of the terms of this Agreement and you must then promptly return the SOFTWARE. In addition, Canon may enforce its other legal rights.
6. **U.S. GOVERNMENT RESTRICTED RIGHTS NOTICE:** The SOFTWARE is provided with restricted rights. Use, duplication or disclosure is subject to restrictions as set forth in either subparagraph (c) (1) (ii) of the Rights in Technical Data and Computer software clause at DFARS 252.227-7013 or subparagraph (c) (1) and (2) of the Commercial Computer Software Restricted Rights Clause at FAR 52.227-19, as applicable.
7. **SEVERABILITY:** In the event that any provision of this Agreement is declared or found to be illegal by any court or tribunal of competent jurisdiction, such provision shall be null and void with respect to the jurisdiction of that court or tribunal and all the remaining provisions of this Agreement shall remain in full force and effect.
8. **CONTROLLING LAW:** The terms of this Agreement as it relates to purchases of the Software in the United States of America shall be governed and construed in all respects in accordance with the laws and regulations of the State of New York, without reference to choice of law principles. The terms of this Agreement as it relates to purchases of the Software in Canada shall be governed by the laws of the province of Ontario.
9. **OWNERSHIP:** All rights, including but not limited to copyrights and trade secret rights, to the SOFTWARE belong to Canon, its affiliated corporations and third party licensors. Your use of the SOFTWARE is subject to the United States, Canada and other applicable copyright and trademark laws and nothing in this Agreement constitutes a waiver of the rights of Canon, its affiliated corporations and third party licensors under such laws. Nothing contained in Paragraph 1 shall be construed to give Canon any ownership rights in any images, graphics or textual material that you save in connection with the Software.
10. **ACKNOWLEDGEMENT:** BY USING THE SOFTWARE, YOU ACKNOWLEDGE THAT YOU HAVE READ THIS AGREEMENT, UNDERSTOOD IT, AND AGREE TO BE BOUND BY ITS TERMS AND CONDITIONS. YOU ALSO AGREE THAT THIS AGREEMENT IS THE COMPLETE AND EXCLUSIVE STATEMENT OF AGREEMENT BETWEEN YOU AND CANON CONCERNING THE SUBJECT MATTER HEREOF AND SUPERSEDES ALL PROPOSALS OR PRIOR AGREEMENTS, VERBAL OR WRITTEN, AND ANY OTHER COMMUNICATIONS BETWEEN THE PARTIES RELATING TO THE SUBJECT MATTER HEREOF. NO AMENDMENT TO THIS AGREEMENT SHALL BE EFFECTIVE UNLESS SIGNED BY A DULY AUTHORIZED OFFICER OF CANON.

# Manual Organization, How to Read the Manual and the Conventions Used

- This manual consists of a chapter for Windows followed by a chapter for Macintosh.



- In this manual, Windows XP Professional/Home Edition is referred to as Windows XP, Windows Millennium Edition is referred to as Windows Me, Windows 2000 Professional is referred to as Windows 2000, and Windows 98 Second Edition is referred to as Windows 98 SE.
- Where explanations are common to all operating systems, the screens used in the examples are from Windows XP for Windows and from Mac OS X (10.2) for Macintosh.
- This manual describes operating methods for the EOS 20D and uses the EOS 20D screens in examples. Supplementary information has been given where necessary about functions that are unique to each camera.
- In this document, square brackets [ ] are used to indicate items such as button names and icon names that appear on the computer screen.
- Numbers in parentheses in this document indicate reference pages.
- Descriptions of camera operations assume that the reader is familiar with the information in the camera's Instruction Manual.
- For the restrictions that apply to the software products, refer also to the Readme files for the respective products.
- In order to transfer images from the EOS Viewer Utility, you will need retouching (image editing) software. In order to start the TWAIN Driver, you will need a TWAIN Driver-compatible application. Explanations for transferring images from the EOS Viewer Utility described in these instructions and the explanations for TWAIN Driver-compatible applications all use examples from Adobe Photoshop 7.0.
- The explanations given below describe the type of content indicated by the respective icons.

 : Marks information that should be read before use to prevent problems that would interfere with the functioning of software and computer.

 : Marks additional information that you will find helpful.

## Safety Precautions

Please read the safety precautions carefully before using this product. Ensure that you use the product correctly according to the procedures described in these instructions.

The following safety precautions are intended to instruct you in the safe and correct operation of the product and its accessories to prevent injuries or damage to yourself, other persons and property. Please read and ensure that you understand them before you proceed to the other sections of these instructions.

### **Warning**

Do not play the supplied CD-ROM(s) in any CD-ROM Player that does not support data CD-ROMs. The extremely loud sound that may result from playing the CD-ROM(s) in an audio CD player (music player) could damage the speakers. It is also possible to suffer hearing losses from listening with headphones to the loud sounds of a data CD-ROM played on a music CD player.

# Software

This section briefly describes the main functions of the software provided on the bundled CD-ROM.

## EOS DIGITAL Solution Disk

### EOS Viewer Utility

Windows

Macintosh

- Dedicated software for an EOS DIGITAL camera to be used for downloading and displaying images, and processing RAW images.
- Can be used for downloading images saved on the memory card in the camera to your computer, displaying single-frame or thumbnail images, checking shooting information or histograms.
- Capable of rotating, protecting, and saving images, printing image indexes, and transferring images to the retouching software.
- Can be used for displaying RAW images and specifying various processing parameters.
- Supports the color management system.
- Supports the color space of sRGB and Adobe RGB.



### EOS Capture

Windows

Macintosh

- Enables you to control the camera from your computer to shoot single-frame images or images using the timer or interval timer. Also, allows you to download images directly to your computer.
- \* The EOS Capture is compatible with the EOS 20D only.
- \* The EOS Capture for Macintosh is only compatible with Mac OS X.

### PhotoStitch

Windows

Macintosh

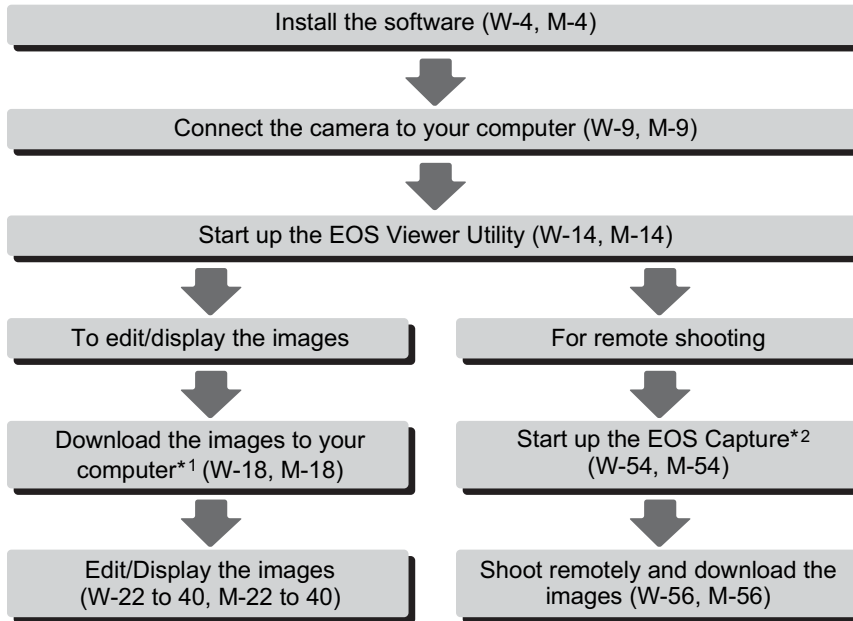
- The PhotoStitch creates composite images such as panorama shots by merging multiple images.

### WIA Driver/TWAIN Driver

Windows

- The WIA Driver or TWAIN Driver controls the communication between the camera and the software. You must install the WIA Driver for Windows XP or Me, and install the TWAIN Driver for Windows 2000 or 98 SE.
- Also used for downloading JPEG images to your computer if you use the WIA Driver alone, or use the TWAIN Driver with a TWAIN Driver-compatible application.

## Operation Flow



- In addition, you can use the WIA Driver or TWAIN Driver (W-63) to quickly and easily download JPEG images from your camera. You can also use the PhotoStitch to merge multiple images to create a panorama shot easily.

\*1 With the EOS Viewer Utility for Mac OS 9, you cannot download images by connecting the camera and your computer. Download images to your computer by either using the EOS Viewer Utility for Mac OS X or by using a third-party card reader.

\*2 Remote shooting in the EOS Eapture is only available with the EOS 20D. You cannot do remote shooting in the EOS Capture on Mac OS 9.

### Trademark Acknowledgments

- Canon and EOS are trademarks of Canon Inc.
- Adobe and Photoshop are registered trademarks or trademarks of Adobe Systems Incorporated in the United States and/or other countries.
- IBM is a registered trademark of International Business Machines Corporation.
- Microsoft and Windows are registered trademarks or trademarks of Microsoft Corporation in the United States and/or other countries.
- iBook, iMac and QuickTime are trademarks of Apple Computer Inc.
- Macintosh, PowerBook and Power Macintosh are trademarks of Apple Computer Inc., registered in the United States and other countries.
- Other names and products not mentioned above may be registered trademarks or trademarks of their respective companies.

# Windows

Where explanations are common to all operating systems, the screens used in the examples are from Windows XP.

## 1 Installing the Software ..... W-3

Describes how to install the bundled software.

## 2 Preparation for Downloading Images ..... W-7

Explains how to set up communication mode, how to connect the camera or a card reader (third-party product) to your computer and complete the installation.

## 3 Working with Images in the EOS Viewer Utility ..... W-13

Explains how to use the EOS Viewer Utility to download images to your computer, edit and save images, and transfer the downloaded images to the retouching software.

## 4 Remote Shooting in the EOS Capture ..... W-53

Describes how to use the EOS Capture for taking shots and specifying the camera settings remotely from your computer.

- **Remote shooting in the EOS Capture is only available with the EOS 20D.**

## 5 Downloading JPEG Images with the Driver ..... W-63

Describes how to download JPEG images using the WIA Drivers for Windows XP or Windows Me, and the TWAIN Drivers for Windows 2000 or Windows 98 SE.

## 6 Troubleshooting and Uninstallation ..... W-69

Provides a troubleshooting and describes the software uninstallation procedures.

Index ..... W-76

# System Requirements

The software bundled with this product runs on the systems described below.

<b>OS</b>	Windows XP (Home Edition/Professional), Windows Me, Windows 2000, Windows 98 SE
<b>Computer</b>	PC with one of the above OS preinstalled and a USB port as a standard feature * Upgraded machines not supported.
<b>CPU</b>	Windows XP: 300 MHz Pentium or better Windows Me, 2000, 98 SE: 150 MHz Pentium or better
<b>RAM</b>	Windows XP: Minimum 256 MB Windows Me, 2000, 98 SE: Minimum 128 MB
<b>Interface</b>	USB 1.1 to 2.0 Hi-Speed*
<b>Hard disk space</b>	EOS Viewer Utility: 100 MB or more EOS Capture: 300 MB or more WIA Driver: 25 MB or more TWAIN Driver: 25 MB or more PhotoStitch: 40 MB or more
<b>Display</b>	Screen resolution: 1024 by 768 pixels or more Color quality: Medium (16 bit) or more

- Depending on your computer system, this software may not run correctly on Windows 98. Use the Windows 98 SE operating system or later.
- A CD-ROM drive is required for installation.
- \* Only the EOS 20D is compatible with USB 2.0 Hi-Speed.





# Installing the Software

This chapter describes how to install the bundled software.

If you were unable to successfully install the software using the procedure given in this manual, see “Troubleshooting” (W-70).

W

1

---

<b>Installing the Software .....</b>	<b>W-4</b>
Correct Installation Procedure .....	W-4

# Installing the Software

- Check that your computer complies with the system requirements for the software (W-2) as you follow the installation procedure.

## Correct Installation Procedure

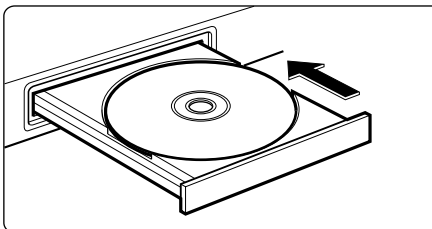
- Always install the software as described in the procedures below.
  - 1 Start up your computer (step 1).
  - 2 Install the software (steps 2 through 9).
  - 3 Remove the CD (step 10).
  - 4 Set the communication mode (W-8).
  - 5 Connect the camera to your computer and complete the installation (W-9).
- Never connect the camera to your computer before you install the software. The software will not be installed correctly. You must connect the camera to your computer after removing the CD.
- If you connected the camera to your computer before installing the software, see “Troubleshooting” (W-73).

### 1 Start up your computer.

- Exit any programs that are running.

### 2 Insert the CD (EOS DIGITAL Solution Disk).

→ The Installer panel appears.



### 3 Click the [Install] button.

→ The [Preparing to Install] window appears and after a brief wait, the [Welcome to the InstallShield Wizard for Solution Disk] window appears.

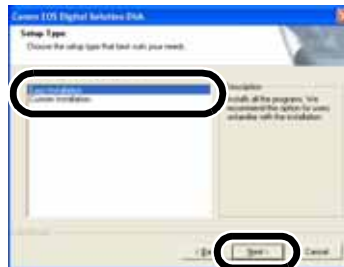


- If the dialog box that prompts you to restart your computer appears, restart your computer. After the computer restarts, the software installation process restarts automatically.

## 4 Click the [Next] button.



## 5 Select [Easy Installation] and click the [Next] button.



## 6 Check the details of the License Agreement and then click the [Yes] button.



## 7 Check the software and the folder in which the software will be installed, and then click the [Next] button.

- Installation begins. It will be complete in approximately 2 to 3 minutes.



W

1

Installing the Software

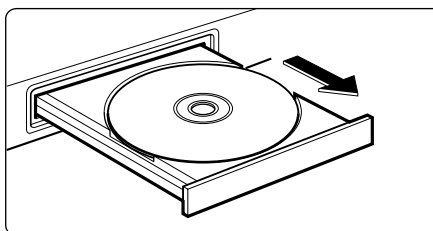
## 8 Click the [Finish] button.




## 9 Click the [Exit] button.



- ## 10 Remove the CD.
- Continue by setting up communication mode and connecting the camera and computer in Chapter 2 to complete installation.



 If you were unable to successfully install the software using the procedure given in this manual, see "Troubleshooting" (W-70).

# Preparation for Downloading Images



This chapter explains how to set up communication mode, how to connect the camera or a card reader (third-party product) to your computer and complete the installation.

If you were unable to successfully install the software using the procedure given in this manual, see “Troubleshooting” (W-70).

---

<b>Setting the Communication Mode.....</b>	<b>W-8</b>
<b>Connecting the Camera to Your Computer.....</b>	<b>W-9</b>
Connecting the Camera to Your Computer for the First Time .....	W-9
Connecting the Camera to Your Computer the Second Time or Later ...	W-10
<b>Using Your Card Reader .....</b>	<b>W-11</b>
<b>Downloading JPEG Images Using the PTP Function in Windows XP ....</b>	<b>W-12</b>

# Setting the Communication Mode

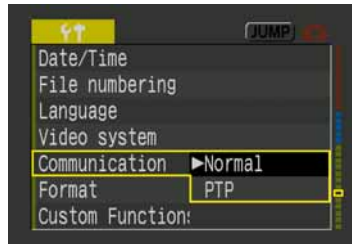
To communicate with the camera using the software on the Solution Disk, set the camera's communication mode to [Normal].

- The settings on this page are only necessary for the EOS 20D, EOS 10D and EOS DIGITAL REBEL/300D DIGITAL.
- With the EOS 10D, you must change the firmware to version 2.0.0 or later. For details on changing, see the Canon website.

**1** Check that the camera is not connected to the computer and then set the camera's power switch to <ON>.

**2** Set the camera's communication mode to [Normal].

- Set [Communication] in menu to [Normal].
- With the EOS DIGITAL REBEL/300D DIGITAL, set [Communication] in menu option <M2> to [Normal].



**3** Press the <MENU> button to switch the LCD monitor display off and then set the camera's power switch to <OFF>.

- ⚠ ● If you set the communication mode to [PTP], the Solution Disk software cannot communicate with the camera. When you are using the software, always set the communication mode to [Normal].
- When setting the communication mode, always ensure that the camera is not connected to the computer beforehand. Setting the communication mode while the camera is connected to the computer will cause camera and software malfunctions.

## About the PTP Setting

The PTP function is only available to Windows XP users. This function provides a simple means of downloading JPEG images to your computer. To use this function, set [Communication] to [PTP] in step 2 above.

- For more information on using the PTP function to download JPEG images, see "Downloading JPEG Images Using the PTP Function in Windows XP" (W-12).

# Connecting the Camera to Your Computer

Before downloading images to your computer or specifying the camera settings, you must connect the camera to your computer with the dedicated USB cable.

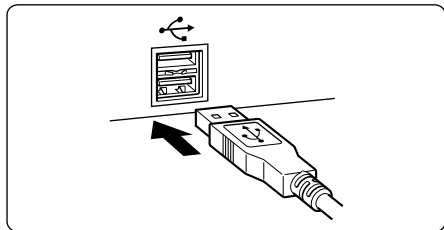
You can connect the camera while your computer is running.

## Connecting the Camera to Your Computer for the First Time

When you connect the camera to your computer for the first time to complete the installation, follow the procedure below right after performing “Installing the Software” (W-4) and “Setting the Communication Mode” (W-8).

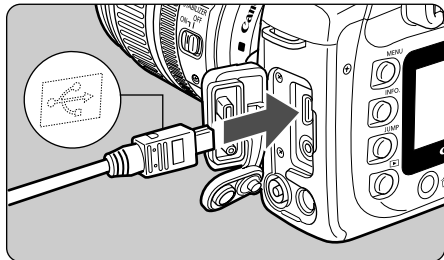
### 1 Plug the dedicated cable into the computer.

- Plug the cable into the USB port.
- Refer to the computer User's Manual for information on the terminal areas.

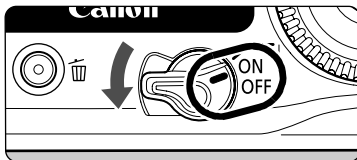


### 2 Plug the dedicated cable into your camera.

- Open the cover and connect the cable to the < DIGITAL > terminal with the [↔] icon facing the front of the camera.
- With the EOS D60 and EOS D30, connect by aligning the <▶> mark on the plug with the <▶> mark on the < DIGITAL > terminal.



### 3 Set the camera's power switch to <ON>.



- When the pop-up menu appears and then disappears automatically, the installation is complete.

- For Windows 2000, Me, 98 SE, a dialog box such as [Found New Hardware] or [Building driver information database] may appear. If this is the case, installation will be completed when the dialog box disappears.
- When the installation is complete, the camera is ready to communicate with your computer. Proceed to Chapter 3 continuously.



- Do not set the camera's power switch to <OFF> until the pop-up menu and dialog boxes automatically disappear.
- If the dialog box that prompts you to restart your computer appears, restart your computer without fail.
- If you were unable to successfully install the software using the procedure given in this manual, see "Troubleshooting" (W-70).



The pop-up menu and dialog boxes shown in step 3 do not appear when you connect the camera to your computer the second time or later.

## Connecting the Camera to Your Computer the Second Time or Later

When you connect the camera to your computer the second time or later, follow the same procedure, set the camera's power switch to <ON>, and then proceed to Chapter 3.




- Never perform the following operations while the software installed from the Solution Disk is running after connecting the camera to the computer as a communications error may occur.
  - Set the camera's power switch to <OFF>.
  - Open the CF card slot cover.
  - Disconnect the dedicated cable, remove the battery, and then remove the AC adapter kit (optional) or DC coupler.
  - Disconnect the AC adapter's or DC coupler's plug or power cord.Before you perform the operations above, be sure to exit all the software.
- You cannot communicate with the camera when you are displaying images through the camera's LCD monitor. Always connect the camera and your computer after turning off the display in the LCD monitor.
- While the camera and your computer are communicating, the camera's LCD panel may blink.
- Use only the dedicated cable.
- Push the plug firmly all the way into the socket. Loose connections can cause faults or malfunctions.
- Do not connect the camera to your computer via a hub. If you do so, the camera may not operate correctly.
- If you connect multiple USB devices (excluding mouse and keyboard) to your computer the camera may not operate correctly. Disconnect other USB devices from your computer and connect only the camera.
- Operation of the Auto power off function will automatically switch the camera off, disabling to communicate with your computer. Set the Auto power off function to [OFF] in advance. (Refer to "Menu Operations" in the camera's Instruction Manual.)



- Do not connect more than one camera to the same computer. The connections may not operate correctly.
- When unplugging the dedicated cable, be sure to grip the sides of the plug as you pull it out.
  - \* If you are using the EOS D60 or EOS D30, pull the plug while pressing the PUSH button on it.
- If you do not perform any operation while the camera and computer are connected, a confirmation message appears on the computer screen asking whether you wish to continue communicating with the camera for some computer systems. If you do not perform any operation even after this message appears, the communication with the camera is terminated. To re-establish the communication, press the shutter button down halfway or set the camera's power switch to <OFF> and then back to <ON>.
- Do not put your computer to sleep while it is connected to the camera.
 

If your computer goes into the sleep mode, never disconnect the dedicated cable while your computer is still in the sleep mode. Always wake your computer up while it is connected to the camera. On some types of computer, disconnecting the dedicated cable while your computer is in sleep mode could prevent the computer from waking up correctly. Refer to the computer User's Manual for more information on sleep mode.

 When you connect the camera and your computer, it is recommended that you use an AC adapter kit (optional) with the EOS 20D, EOS 10D and EOS DIGITAL REBEL/300D DIGITAL, and the DC coupler supplied with the EOS D60 and EOS D30.

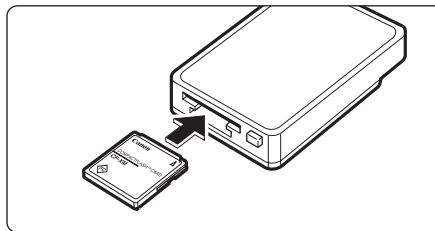
## Using Your Card Reader


Users with a third-party card reader can download images directly from a memory card to the computer.

**1** Remove the memory card from the camera.

**2** Load the card into the card reader.

- Proceed to Chapter 3 continuously.



 For information on connecting the card reader to your computer, refer to the card reader User's Manual.

W

2

Preparation for Downloading Images

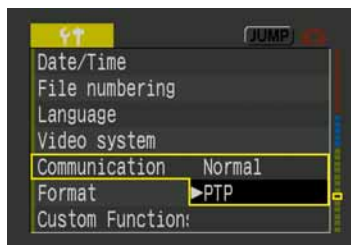
# Downloading JPEG Images Using the PTP Function in Windows XP

Windows XP users can use the PTP (Picture Transfer Protocol) function. The PTP function allows you to download JPEG images saved on a memory card in the camera to your computer without having to start the software provided on the Solution Disk.

- **This function is available with the EOS 20D, EOS 10D and EOS DIGITAL REBEL/300D DIGITAL only.**
- With the EOS 10D, you must change the firmware to version 2.0.0 or later. For details on changing, see the Canon website.

## 1 Set the camera's communication mode to [PTP] (W-8).

- Set [Communication] in menu to [PTP].
- With the EOS DIGITAL REBEL/300D DIGITAL, set [Communication] in menu option <F2> to [PTP].
- Press the <MENU> button to clear the LCD monitor display.
- When you have finished, set the camera's power switch to <OFF>.



## 2 Connect the camera to the computer and set the camera's power switch to <ON> (W-9).

- The [Scanner and Camera Wizard] dialog box appears.



## 3 Download images as directed in the [Scanner and Camera Wizard] dialog box.

- For the procedure for downloading JPEG images using the [Scanner and Camera Wizard], refer to step 3 onwards in "Downloading with [Scanner and Camera Wizard]" (W-64).

ⓘ Refer to the separate "Notes on the PTP Function" for details when the downloaded image does not display correctly or the image cannot be downloaded.

# Working with Images in the EOS Viewer Utility



This chapter explains how to use the EOS Viewer Utility to download images to your computer, edit and save images, and transfer the downloaded images to the retouching software.

For more information on the restrictions of the EOS Viewer Utility, refer also to the source listed below.

Readme: Click the [Start] button ► select [All Programs] ([Programs] in other versions of Windows) ► [Canon Utilities] ► [EOSViewerUtility xx] (“xx” is the version) ► [EOSViewerUtility Readme].

<b>Starting the EOS Viewer Utility ...</b>	<b>W-14</b>	Deleting Images .....	W-29
<b>Downloading Images .....</b>	<b>W-18</b>	Checking the Image Information and	
<b>Handling the Folders.....</b>	<b>W-20</b>	Entering Comments.....	W-29
Memory Card Folder Structure and File		<b>Printing Images .....</b>	<b>W-30</b>
Names .....	W-20	<b>Editing Raw Images .....</b>	<b>W-31</b>
Registering Frequent Use Folder ...	W-21	Processing RAW Images .....	W-31
<b>Selecting the Image Display Mode ....</b>	<b>W-22</b>	Specifying the Processing Parameters ..	W-32
Main Window (Thumbnail Display) ...	W-22	Adjusting the Brightness (Digital	
Preview Window Display .....	W-22	Exposure Compensation).....	W-33
Selecting the Display Size .....	W-24	Adjusting the White Balance .....	W-34
Checking the AF Point.....	W-24	Selecting the Contrast .....	W-37
<b>Selecting Images .....</b>	<b>W-25</b>	Adjusting the Color .....	W-38
Selecting Images in the Main Window ..	W-25	Specifying the Color Space .....	W-40
Selecting Images in the Preview		Selecting the Sharpness .....	W-40
Window .....	W-25	<b>Saving Images .....</b>	<b>W-41</b>
Attaching Check Marks to Images ....	W-26	Extracting JPEG Images from RAW	
Selecting Images by Condition ...	W-26	Images.....	W-43
Bringing/Sending the Main Window to		<b>Transferring Images to Retouching</b>	
the Front/Back of Window Stack...W-27		<b>Software .....</b>	<b>W-44</b>
Equalizing the Display Sizes in the		<b>Specifying the Preferences .....</b>	<b>W-46</b>
Preview Window .....	W-27	<b>Setting the IPTC Information.....</b>	<b>W-47</b>
<b>Editing Images.....</b>	<b>W-28</b>	<b>Specifying the Camera Settings ...</b>	<b>W-50</b>
Protecting Images.....	W-28	<b>Merging Images with the PhotoStitch ...</b>	<b>W-52</b>
Rotating Images .....	W-28		

# Starting the EOS Viewer Utility

## 1 Connect the camera to your computer (W-9).

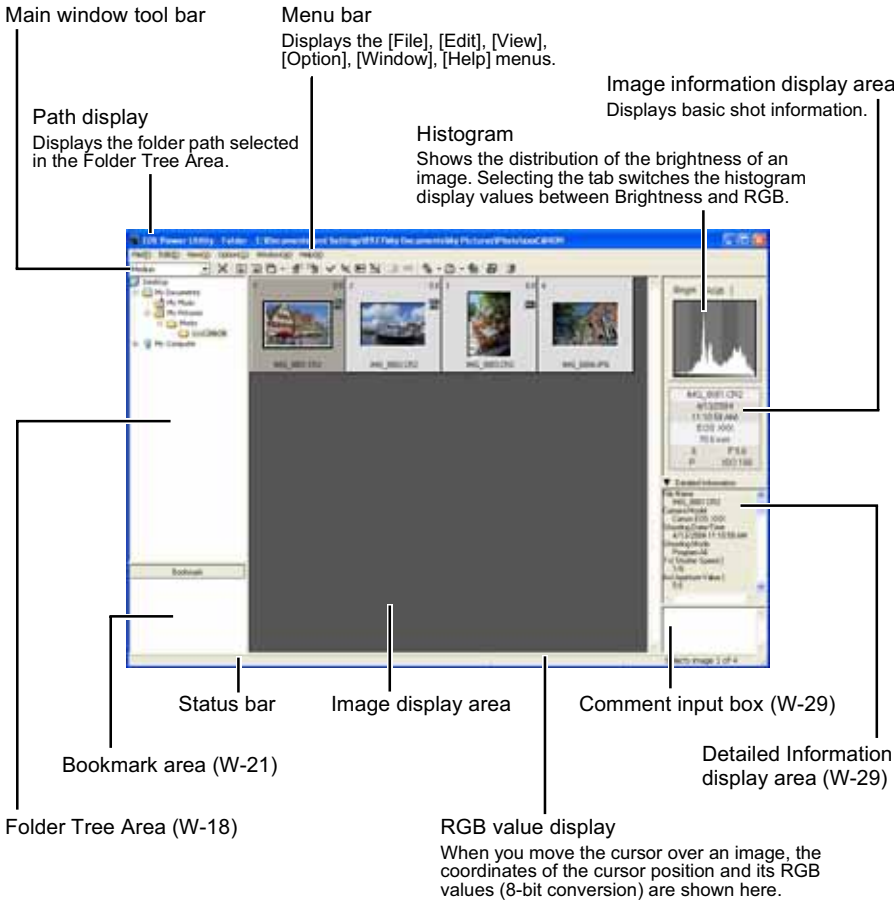
- The dialog box on which the camera model is displayed appears.
- Your camera model is displayed in EOS XXX.
- For Windows Me, the [Scanner and Camera Wizard] dialog box appears.
- Click the [Cancel] button to close the open window.



## 2 Click the [Start] button ► select [All Programs] ([Programs] in other versions of Windows) ► [Canon Utilities] ► [EOSViewerUtility xx] ► [EOSViewerUtility].

- The main window appears.
- You can also start the EOS Viewer Utility by double-clicking the [EOSViewerUtility] icon on the desktop.
- The EOS Viewer Utility version information is displayed in xx.

### Main window



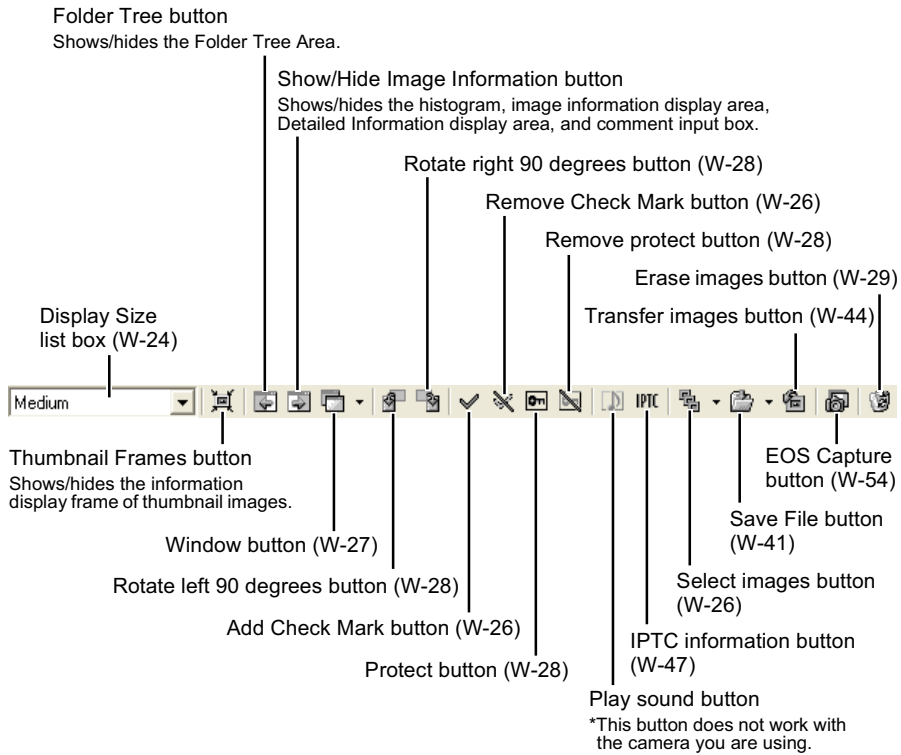
W

3

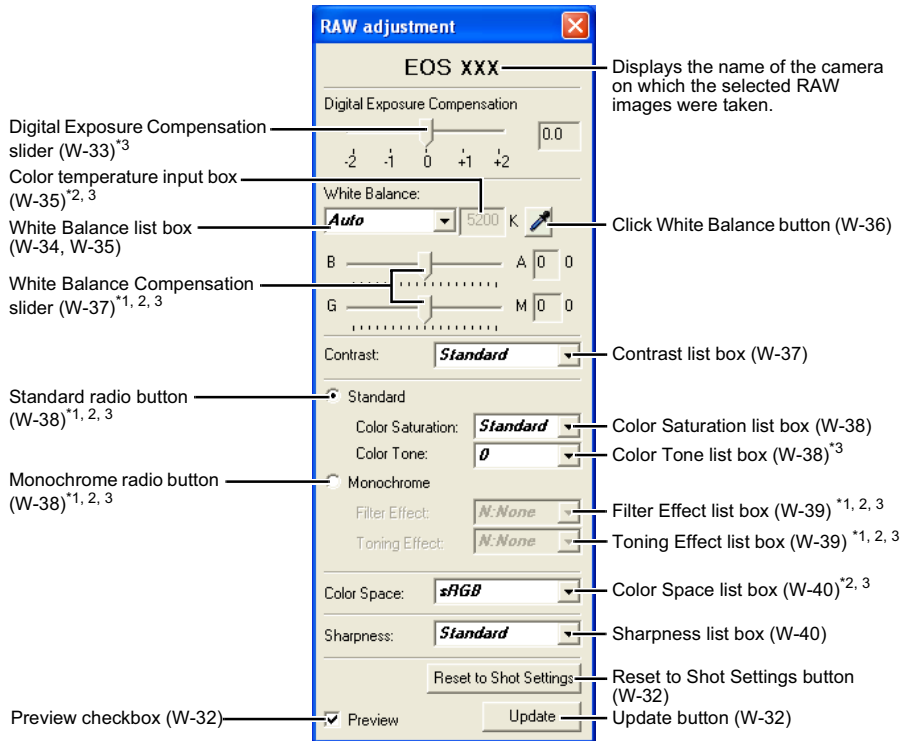
Working with Images in the EOS Viewer Utility

- To exit the EOS Viewer Utility, select the [File] menu ► [Exit].

## Main window tool bar



## RAW adjustment tool palette



- When you select a RAW image, the name of the camera on which the selected RAW image was taken and its settable processing parameters are displayed.

\*<sup>1</sup> Not displayed with the EOS 10D and EOS DIGITAL REBEL/300D DIGITAL RAW images.

\*<sup>2</sup> Not displayed with the EOS D60 RAW images.

\*<sup>3</sup> Not displayed with the EOS D30 RAW images.



- Where you have selected a JPEG image or where you have selected a TIFF or JPEG image converted from a RAW image with the EOS Viewer Utility, nothing is displayed on the RAW adjustment tool palette and the image cannot be edited.
- Where you have selected a RAW image saved on the memory card inside the camera, nothing is displayed on the RAW adjustment tool palette and the image cannot be edited. Work with the images saved on your computer from the memory card.



- The settings used when shots were taken are displayed in italic or bold type in the list box.
- If the RAW adjustment tool palette is hidden, select the [View] menu ► [Tool palette] to show it.

W

3

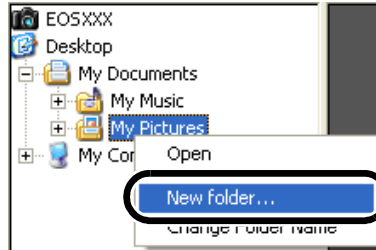
Working with Images in the EOS Viewer Utility

# Downloading Images

The procedure below describes how to download (copy) the images saved on a memory card in the camera to your computer, and display them on the main window. You can download images in the Folder Tree Area.

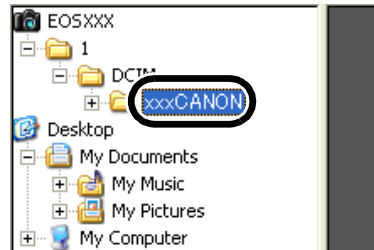
## 1 Create a folder to which images will be downloaded.

- From the menu that is displayed by right-clicking on the destination folder, select [New folder] to create a folder and enter a name for the folder. (The [Photo] folder is created in the [My Pictures] folder here as an example.)



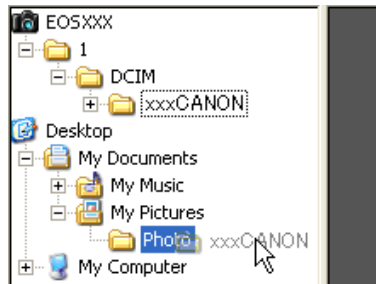
## 2 Display a folder to be copied.

- Double-click the camera icon ► the [1] folder ► the [DCIM] folder.  
→ The [xxxCANON] folder is displayed. ("xxx" represents a number 100 to 999.)



## 3 Copy the folder to the hard disk.

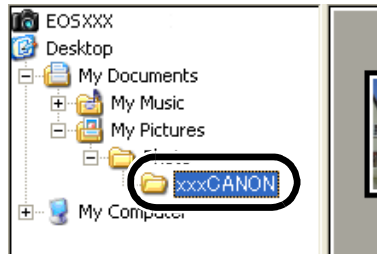
- Drag and drop the [xxxCANON] folder to the destination folder.  
→ The [xxxCANON] folder is saved on your computer.





## 4 Click the copied folder.

- The images in the folder are displayed.
- Before disconnecting the camera from your computer, exit the EOS Viewer Utility, set the camera's power switch to <OFF>, and then disconnect the dedicated cable.



W

- You cannot display images in the preview window (W-22) or edit RAW images (W-31) saved on a memory card in the camera directly. Work with the images saved on your computer from the memory card.
- For displaying images saved in a third-party card reader, follow the same procedure to download the target folder to your computer.

3

## Supported Image Formats

The images below can be displayed with the EOS Viewer Utility.

Image Format	File Extension
RAW images taken with the EOS-1D Mark II and the EOS 20D	.CR2
RAW images taken with the EOS-1Ds and the EOS-1D	.TIF
RAW images taken with the EOS 10D, DIGITAL REBEL/300D DIGITAL, D60 and D30	.CRW
JPEG images conforming with the Exif 2.2, 2.21 standard*	.JPG/.JPEG
TIFF images conforming with the Exif standard*	.TIF/.TIFF

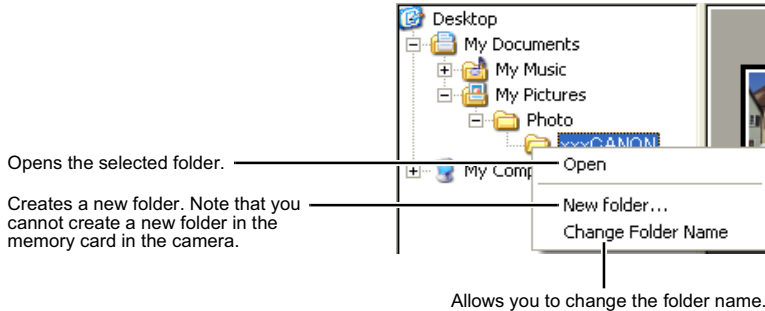
\* Includes TIFF and JPEG images converted from RAW images and saved with the EOS Viewer Utility.


- Images that cannot be displayed appear as a question mark [?].
  - The images that are processed on your computer after being shot or the images whose file name is changed may not be displayed properly.
  - You cannot use the camera while displaying images on the camera.
- By setting [Auto rotate] setting to <ON> for the camera with this function, images shot in a vertical position are automatically displayed vertically.
- If the selected folder contains a large number of images, there may be a short delay before the images appear.

# Handling the Folders

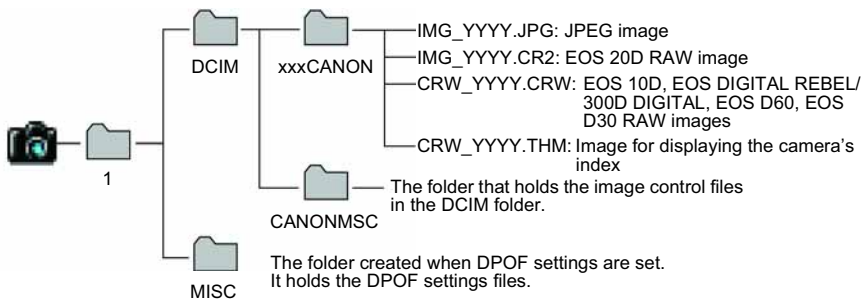
You can handle the folder on the menu that appears by right-clicking the folder.

**Right-click on the folder and select an option from the menu that appears.**




 You can drag and drop folders from the Folder Tree Area to the other folders.

## Memory Card Folder Structure and File Names



- The "xxx" in the folder names represent a number between 100 to 999.
- The "YYYY" in the file names represent a number between 0001 to 9999.

 The file name of images shot with the EOS 20D is "\_MG\_" (the first character is an underscore) when Adobe RGB is set.

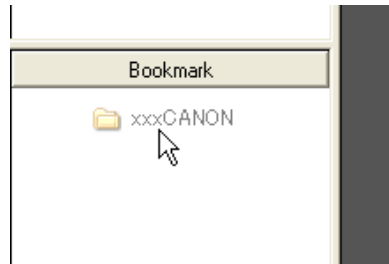
## Registering Frequent Use Folder

You can register frequent use folders as bookmark folders.

### 1 Display a folder to be registered (W-18).

### 2 Register a folder as a bookmark folder.

- Drag and drop the folder to be registered as shown on the right.
- The folder icon appears in the Bookmark area when it is registered.
- To delete the registered folder, right-click the folder and select [Delete] from the menu that appears.



- You can also reorder the folders in the Bookmark area by dragging and dropping them.
- When you delete the registered folder, it just disappears from the Bookmark area. The actual data of the folder and the images in that folder will not be deleted.

# Selecting the Image Display Mode

You can select the display size and method of images.

## Main Window (Thumbnail Display)

Various information can be displayed with images.

1 — Display number  
Numbers are assigned sequentially to the displayed images starting with the first image.

0.0 — Digital exposure compensation value (W-33)

RAW JPEG — Recording quality  
The [RAW] and [RAW+JPEG] symbols are displayed for RAW and RAW+JPEG images respectively. No symbol is displayed for JPEG images.  
\* Only images taken with the EOS 20D in RAW+JPEG format display the [RAW+JPEG] symbol.

IMG\_0001.CR2 — File name or shooting date/time  
The items selected in the [Image Lower Display Item] list box in the [Preferences] dialog box (W-46) are displayed.

Protect mark (W-28) — This mark is displayed on protected images.

Check mark (W-26) — This mark is displayed on images for which a check mark was attached.

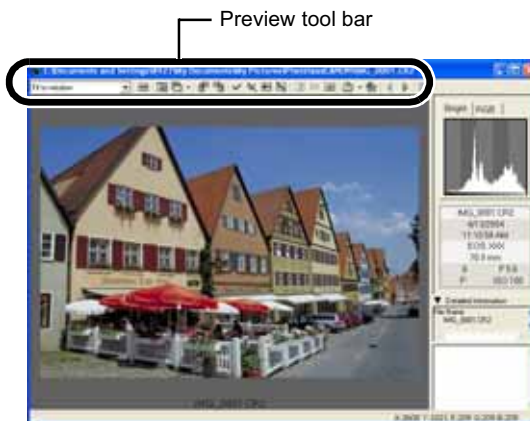
## Preview Window Display

Double-clicking an image displayed on the main window can enlarge the image.

When you change the processing parameters of RAW images, use this window.

- The preview window can display a maximum of six previews.
- A low resolution image is displayed first in the preview window, and then it changes to a high resolution image.

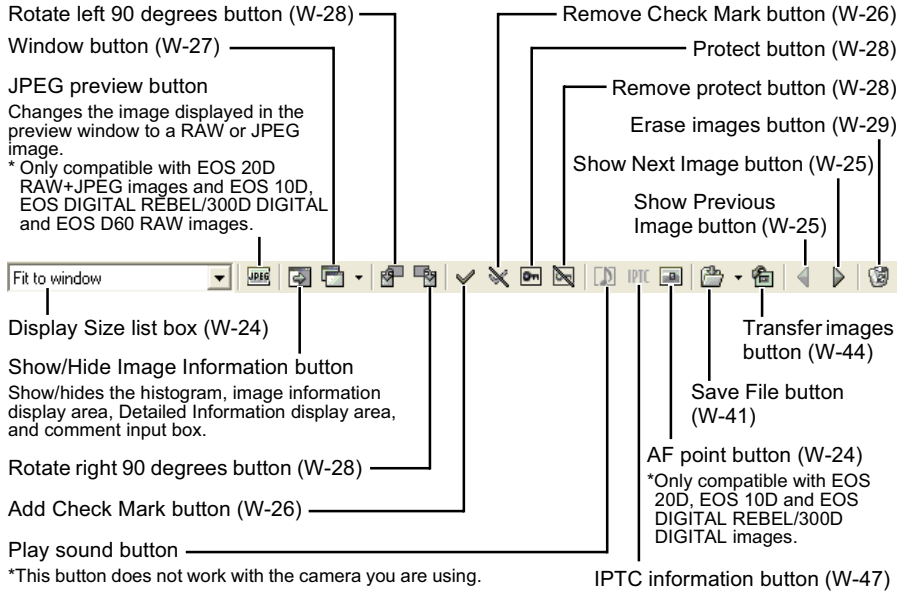
## Preview window



RAW adjustment tool palette



## Preview tool bar



You cannot display images in the preview window or edit RAW images (W-31) saved on a memory card in the camera directly. Work with the images saved on your computer from the memory card.

- For some images, it may take some time to change to the high resolution image.
- You can set the image displayed in the preview window to RAW image or the simultaneously recorded JPEG image (W-46).

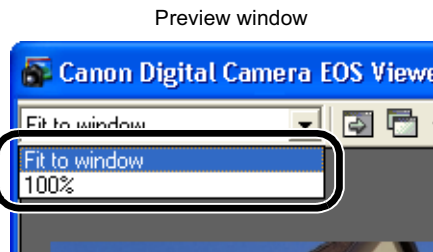
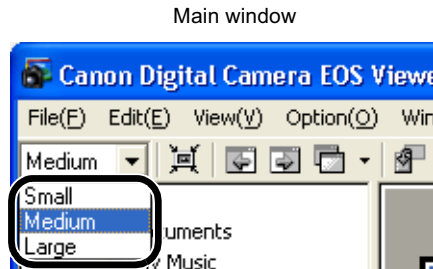
W

3

## Selecting the Display Size

### Select a display size from the list box.

- In the main window, the available image sizes are [Small] (64 × 42 pixels), [Medium] (100 × 66 pixels), and [Large] (160 × 106 pixels).
- In the preview window, the available image sizes are [Fit to window] and [100%].
- When you select [100%], you can change the display position by dragging the image.



## Checking the AF Point

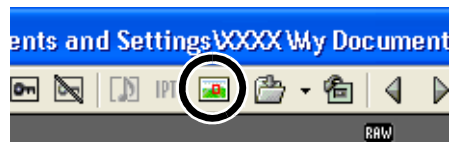
The AF point used when the shot was taken can be displayed.


- This function is only available with images of the EOS 20D, EOS 10D and EOS DIGITAL REBEL/300D DIGITAL.

**1** Display the image in the preview window (W-22).

**2** Click the [AF point] button.

- The AF point is displayed.
- Clicking the button again hides the AF point.



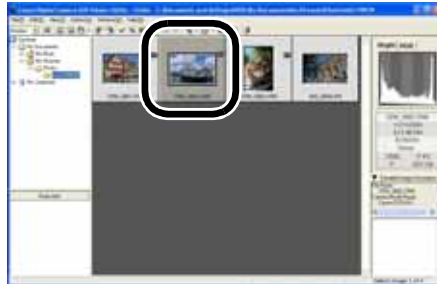
 When the shot was taken with automatic AF point selection, multiple active AF points might be displayed.


# Selecting Images

## Selecting Images in the Main Window

### Click the target image.

- The frame around the selected image is colored.
- To select multiple images, hold down the <Ctrl> key and click the images.
- To select sequential images, click the first image and then hold down the <Shift> key and click the last image.



 Alternatively, you can use the arrow keys (↑←→↓) on the keyboard to select images.

## Selecting Images in the Preview Window

### Click the target image.

- The selected image is displayed on the top window.



- When only one preview window is displayed, you can click the [Show Previous Image] button or the [Show Next Image] button to select the image to be displayed.

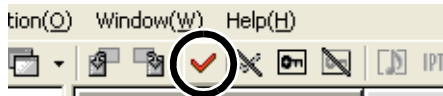


## Attaching Check Marks to Images

You can attach a check mark to the RAW image, allowing you to select images more easily.

### Click the [Add Check Mark] button.

→ When the check mark is placed, the [✓] icon appears in the frame of the image.



● Clicking the [Remove Check Mark] button removes the [✓] icon from the frame of the image, and erases the check mark.



ⓘ You cannot attach the check mark for any images other than RAW images.

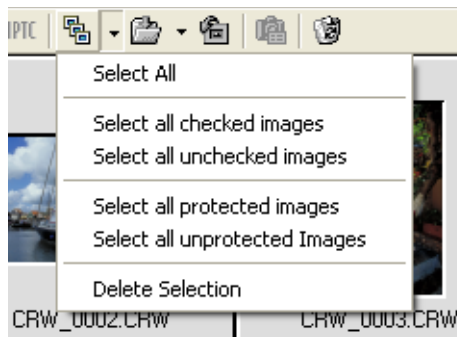
- When multiple RAW images are selected, the check mark is attached to all the selected RAW images.
- Alternatively, you can perform the same operation using the menu that appears by right-clicking.

## Selecting Images by Condition

This feature allows you to select multiple images in a single operation using conditions.

### Click the [Select images] button and select the condition from the menu that appears.

→ Only images that meet the condition are selected.

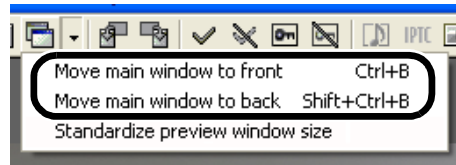




## Bringing/Sending the Main Window to the Front/Back of Window Stack

Select [Move main window to front] or [Move main window to back] from the menu that appears by clicking the [Window] button.

→ The main window is brought/sent to the front/back of window stack.



W

## Equalizing the Display Sizes in the Preview Window

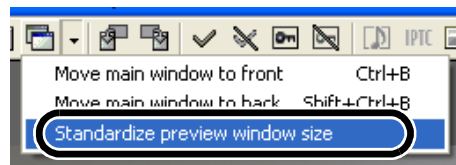
You can set all the preview windows to the same size.

**1** Select the image whose size is the desired size (w-25).



**2** Click [Standardize preview window size] from the menu that appears by clicking the [Window] button.

→ All the displayed preview windows are set to the same size as the selected image.



3

Working with Images in the EOS Viewer Utility

# Editing Images

You can edit all the images that can be displayed in the EOS Viewer Utility.



When multiple images are selected, the edits are applied to all the selected images.

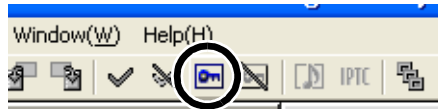
## Protecting Images

You can protect important images to prevent them from being accidentally deleted.

### Click the [Protect] button.

→ When the image is protected, the [🔒] icon appears in the frame of the image.

- Clicking the [Remove protect] button removes the [🔒] icon from the frame of the image, and clears the protection.



- The [🔒] is automatically displayed for images that were protected on the camera.
- Protection only prevents images from being deleted. Other types of image operations can still be performed for protected images.
- Alternatively, you can perform the same operation using the menu that appears by right-clicking.

## Rotating Images

You can rotate a selected image by 90-degree increments left or right.

### Click the [Rotate right 90 degrees] or [Rotate left 90 degrees] button.

→ The image rotates 90 degrees in the selected direction.



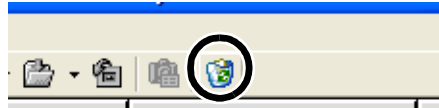
- By setting [Auto rotate] setting to <ON> for the camera with this function, images shot in a vertical position are automatically displayed vertically.
- If a rotated image is displayed in another application, the image may not appear rotated.
- Alternatively, you can perform the same operation using the menu that appears by right-clicking.

## Deleting Images

You can move unnecessary images to the Recycle Bin on your computer and delete them.

### 1 Click the [Erase images] button.

→ The images are moved to the Recycle Bin.



### 2 Select [Empty Recycle Bin] from the menu that appears by right-clicking [Recycle Bin] on the desktop.

→ The images are deleted.

- Images that you deleted by selecting [Empty Recycle Bin] in step 2 cannot be restored. Check carefully before deleting images.
- Protect important images (W-28) to prevent them from being accidentally deleted.

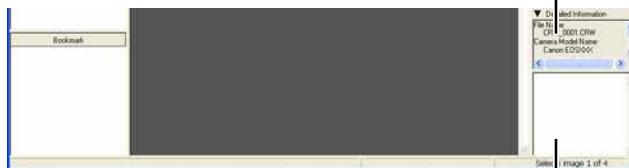
Alternatively, you can perform the same operation using the menu that appears by right-clicking.

## Checking the Image Information and Entering Comments

You can check the information recorded with images and input comments.

Detailed Information display area

- The shooting information is displayed.  
The number of items displayed differs depending on the camera settings.
- You can copy the information as text data and paste it into another application.
- Clicking the [▼] button can hide the Detailed Information display area.



Comment input box

You can use this box to type in a comment up to 120 characters long. Type in your comment and press the <Enter> key.

You cannot insert a hard return in the comment input box.

When multiple images are selected, the information from the image selected last is displayed.

# Printing Images

You can use the EOS Viewer Utility to print images in index format.

**1** Select images to be printed in index format (W-25).

**2** Select the [File] menu ► [Print Index].  
→ Printing begins.



If you wish to specify the printer settings, select the [File] menu ► [Page Setup].

# Editing Raw Images

You can specify the processing parameters for RAW images so that the RAW images are optimized for their intended purpose.

## Processing RAW Images

RAW images are processed based on the settings specified on the camera (including the processing parameters and white balance) and then displayed on the computer.

- When the following operations are performed, RAW images are processed and displayed:
  - When the preview window is switched from the main window
  - When the processing parameters are specified on the preview or main window
  - When the image is converted to the TIFF or JPEG format and saved
  - When the image is transferred to the specified retouching softwareWhen the images are processed, it takes a while to display them.
- Approximate processing times

Operation Details Camera Model	Switching from the main window to the preview window	Transferring an image to the specified retouching software
EOS 20D	Approx. 3 sec.	Approx. 35 sec.
EOS 10D	Approx. 2 sec.	Approx. 30 sec.
EOS DIGITAL REBEL/ 300D DIGITAL	Approx. 2 sec.	Approx. 30 sec.
EOS D60	Approx. 3 sec.	Approx. 30 sec.
EOS D30	Approx. 2 sec.	Approx. 20 sec.

- **The processing times given here are only approximations. Actual processing times vary widely depending on the images and the computer system.**
- Processing times are based on Canon testing standards.  
(OS: Windows XP; CPU: 2.2 GHz Pentium 4; RAM: 256 MB)
- The processing time in the retouching software includes starting up time of the retouching software (when using Adobe Photoshop 7.0).



You cannot display images in the preview window (W-22) or edit RAW images saved on a memory card in the camera directly. Work with the images saved on your computer from the memory card.

## Specifying the Processing Parameters

You can specify the processing parameters in the RAW adjustment tool palette.

- This processing applies the specified parameters virtually and does not affect the original RAW images in any way. Consequently, you can redo the processing as often as you like with different parameters and then reset the modified parameters to the settings used when the shot was taken.
- Linear processing can be specified when an image is saved (W-41) or is transferred to retouching software (W-44).
- The procedure below is an operating method in the preview window, but you can set processing parameters with the same operation in the main window also. However, in the main window, you cannot click the [Preview] checkbox and the processing parameters you have set are immediately reflected in the image.

### 1 Display the RAW images in the preview window (W-22).

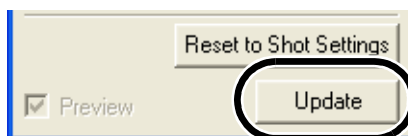
- If the RAW adjustment tool palette is hidden, select the [View] menu ► [Tool palette] to show it.

### 2 Specify the processing parameters (W-33 to W-40).

- Clicking the [Reset to Shot Settings] button restores the settings to the values used when the shot was taken.
- If you click the [Preview] checkbox, the specified processing parameters are applied to the RAW images.

### 3 Click the [Update] button.

- The RAW images are processed according to the specified processing parameters.



### 4 Save (W-41) or transfer images (W-44).

- ⓘ The processing parameters set with the EOS Viewer Utility in the RAW images of a camera other than the EOS 20D are cancelled when you exit the EOS Viewer Utility, and are reset to the processing parameters for when shooting. Either convert the RAW image specified with the processing parameters to a TIFF or JPEG image and save (W-41), or transfer to retouching software (W-44) and save.

- ⓘ When multiple images are selected in the main window, the specified processing parameters are applied to all the selected RAW images.

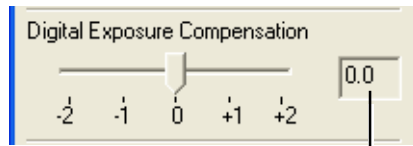
## Adjusting the Brightness (Digital Exposure Compensation)

You can adjust the brightness of an image in the range of +/-2 stops in 0.1-stop increments.

- This function is only available with RAW images of the EOS 20D, EOS 10D, EOS DIGITAL REBEL/300D DIGITAL and EOS D60.

**Drag the slider left or right to adjust the brightness.**

→ The adjusted value is specified in the RAW adjustment tool palette.



Adjustment value set with the slider.

**W****3**

Working with Images in the EOS Viewer Utility

## Adjusting the White Balance

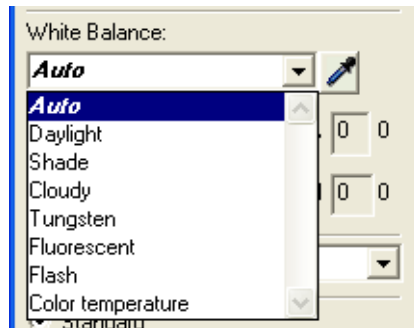
You can adjust the white balance in the images.

### Selecting the White Balance

You can select the white balance that is the closest to the light source when shots were taken.

#### Select the white balance from the list box.

- [Shade] and [Color temperature] are not displayed for the EOS D60 and EOS D30 RAW images.



White Balance	Details	Color Temp. K (Kelvin)
Auto	Automatically adjusts the white balance.	Approx. 3000 to 7000
Daylight	For sunny daylight outdoors.	Approx. 5200*
Shade	For shaded areas outdoors.	Approx. 7000
Cloudy	For cloudy or hazy days and during sunset.	Approx. 6000
Tungsten	For tungsten (light bulb) light.	Approx. 3200
Fluorescent	For white fluorescent light.	Approx. 4000
Flash	When flash is used.	Approx. 6000
Color temperature	You can manually set color temperature for 2800 to 10000K (in 100K increments) (W-35).	Approx. 2800 to 10000

\* Approximately 5500 with the EOS D30 RAW images.

→ The selected white balance is specified in the RAW adjustment tool palette.

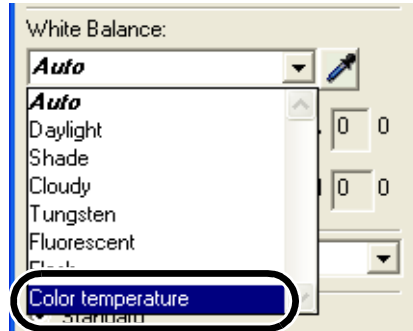


## Specifying the Color Temperature

You can specify the color temperature to adjust the white balance.

- This function is only available with RAW images of the EOS 20D, EOS 10D and EOS DIGITAL REBEL/300D DIGITAL.

**1** Select [Color temperature] from the list box.



**2** Enter a color temperature.

- Enter the color temperature in the [Color temperature] input box in the range of 2800K to 10000K (in 100K increments).
- The entered color temperature is specified in the RAW adjustment tool palette.

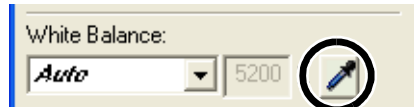


## Click White Balance Function

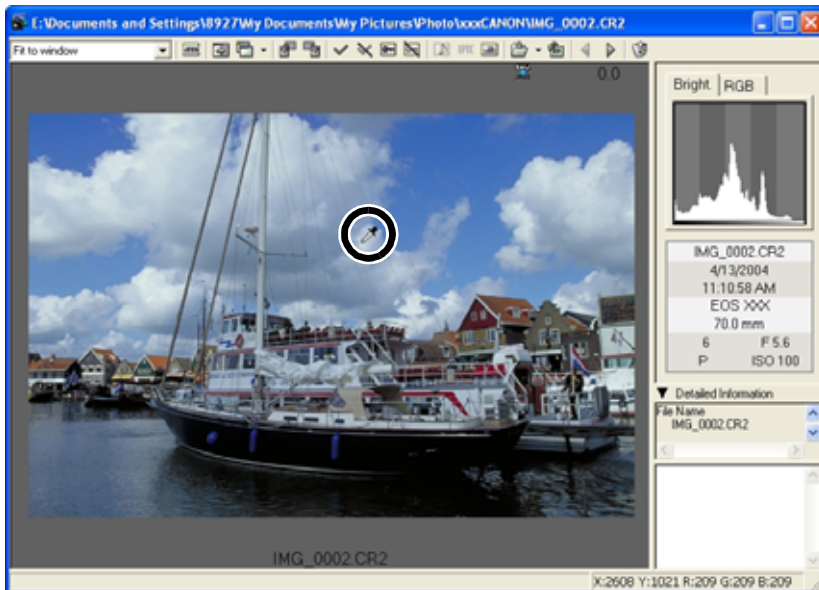
Makes white the standard for the part you have selected and automatically adjusts the white balance.

### 1 Click the [Click White Balance] button.

→ When you move the cursor over the image, the cursor [↔] changes to [↔].



### 2 Click the part where white is to be the standard.



→ The white balance is adjusted so that the point clicked appears white.

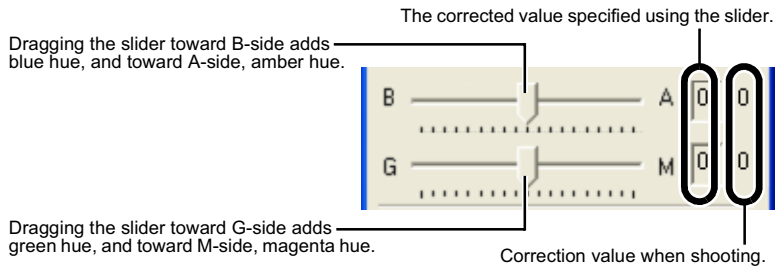
- When you use Click White Balance Function, even though you do not click the [Preview] checkbox, the adjusted white balance is applied to the images.
- When you use Click White Balance Function, [Click WB] is displayed in the [White Balance] list box.
- You can adjust by selecting the neutral gray parts of the image.

## Correcting the White Balance

You can correct the standard color temperature of the white balance. By using this function, you can obtain the effectiveness similar to the color temperature converting filter or color compensating filter (third-party product). The range of compensation is 9 levels for each color. This function is especially useful for users who understand the role and effect of the color temperature converting filter or color compensating filter.

- This function is only available with the EOS 20D RAW images.

**Drag the slider left and right to adjust the white balance.**



→ The corrected value is specified in the RAW adjustment tool palette.



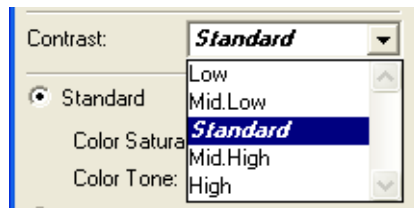
One level of blue/amber hue is equal to five mireds of the color temperature converting filter. (Mired: the unit of the density of the color temperature converting filter)

## Selecting the Contrast

You can adjust the contrast of an image.

**Select a setting from the list box.**

- The selected setting is specified in the RAW adjustment tool palette.
- [Mid.Low] and [Mid.High] are not displayed for the EOS D60 and EOS D30 RAW images.



## Color Adjustment

Select the color adjustment options with the radio buttons to make each type of adjustment.

- **Selecting of color adjustment options is only available with EOS 20D RAW images.**

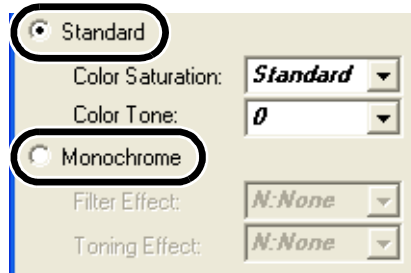
**Select the [Standard] radio button or the [Monochrome] radio button.**

→ With the radio button you have selected, you can make the following color adjustments. Also, if you select [Monochrome], the image will become monochrome.

[Standard]: Color Saturation, Color Tone

[Monochrome]: Filter Effect, Toning Effect

- See the section below for adjustment methods.

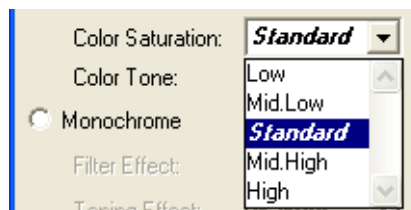


### Selecting the Color Saturation

**Select a setting from the list box.**

→ The selected setting is specified in the RAW adjustment tool palette.

- [Mid.Low] and [Mid.High] are not displayed for the EOS D60 and EOS D30 RAW images.



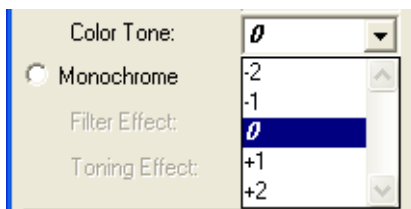
### Adjusting the Color Tone

- **This function is only available with RAW images of the EOS 20D, EOS 10D, EOS DIGITAL REBEL/300D DIGITAL and EOS D60.**

**Select a setting from the list box.**

→ The selected setting is specified in the RAW adjustment tool palette.

- The more negative the value, the redder the image becomes, and the more positive the value, the more yellow.
- [-2] and [+2] are not displayed for the EOS D60 RAW images.

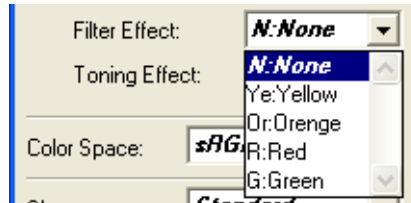


## Filter Effect

- This function is only available with EOS 20D RAW images.

### Select a setting from the list box.

- The selected setting is specified in the RAW adjustment tool palette.



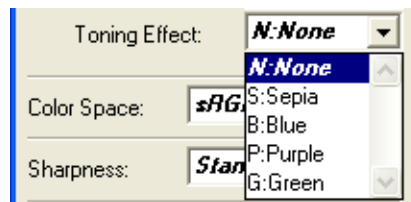
W

## Toning Effect

- This function is only available with EOS 20D RAW images.

### Select a setting from the list box.

- The selected setting is specified in the RAW adjustment tool palette.



3

Working with Images in the EOS Viewer Utility

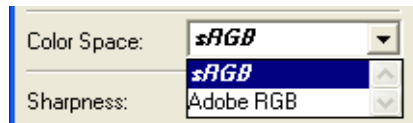
## Specifying the Color Space

You can set the color space of the images you have taken.

- This function is only available with RAW images of the EOS 20D, EOS 10D and EOS DIGITAL REBEL/300D DIGITAL.

### Select a setting from the list box.

- The selected setting is specified in the RAW adjustment tool palette.



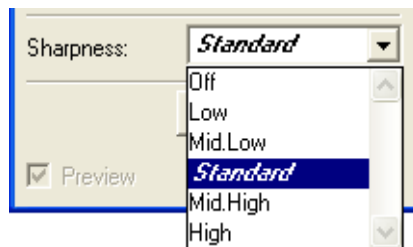
- The specified color space is recorded in the ICC profile attached to a TIFF image converted and saved from a RAW image (W-41).
- An ICC profile contains color information, such as color properties and color spaces of devices which are authorized by International Color Consortium (ICC). With this ICC profile, many color management systems can minimize the color differences between devices.

## Selecting the Sharpness

You can adjust the edge sharpness of an image.

### Select a setting from the list box.

- Higher values give higher levels of edge sharpening.
- [Mid.Low] and [Mid.High] are not displayed for the EOS D60 RAW images.
- [Off], [Mid.Low] and [Mid.High] are not displayed for the EOS D30 RAW images.
- The selected setting is specified in the RAW adjustment tool palette.



# Saving Images

You can convert and save RAW images to TIFF or JPEG images, and save JPEG images as another name. When you convert RAW images to the TIFF format and save them, the specified color space data (W-40) is attached to each of images as the ICC profile automatically.

## 1 Select images to be saved (W-25).

## 2 Click the [Save File] button and select [Convert and save in file] from the menu that appears.

→ The [Save File] dialog box appears.



## 3 Specify the settings and click the [OK] button.

→ The images are saved in the selected folder.

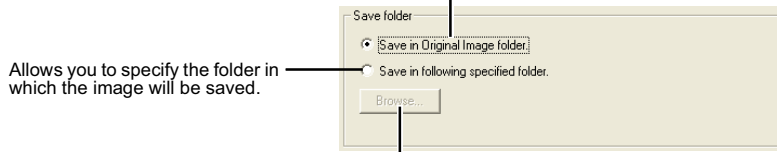


Applies the settings and saves the image.

Restores the settings to their original ones and closes the [Save File] dialog box.

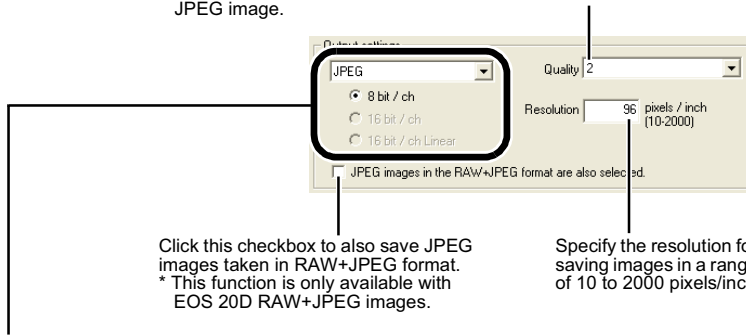
- When you convert RAW images to the TIFF images and save them, the ICC profile is attached to each of images automatically. An ICC profile contains color information, such as color properties and color spaces of devices which are authorized by International Color Consortium (ICC). With this ICC profile, many color management systems can minimize the color differences between devices.
- Alternatively, you can perform the same operation using the menu that appears by right-clicking.

The image is saved as a new image in the same folder as the selected image.



When the [Save in following specified folder] radio button has been selected, this button allows you to specify the folder in which the image will be saved. The name of the destination folder is displayed next to the [Browse] button.

Select a setting for [Quality] (compression ratio) when you have selected [JPEG] from the list box, from [4 (Highest image quality)] through [1 (High Compression Ratio)]. Higher values give higher quality of the JPEG image.



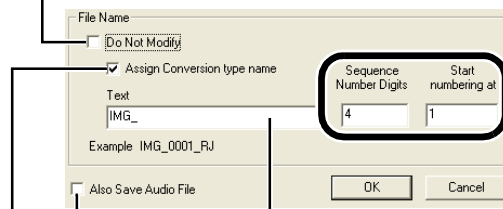
If some of the images to be saved are RAW images, select [Do not convert], [JPEG], or [TIFF] for the conversion format. If you select [TIFF], you can select the number of bits used when you save images from [8bit/ch], [16bit/ch] or [16bit/ch linear]. If you select [JPEG], the images are saved in the [8bit/ch] format.

The extensions used for the saved files are shown below.

Conversion Format		Extension
Do not convert	EOS 20D	.CR2
	EOS 10D, EOS DIGITAL REBEL/300D DIGITAL, EOS D60, EOS D30	.CRW
JPEG (8bit/ch)		.JPG
TIFF (8bit/ch)		.TIF
TIFF (16bit/ch, 16bit/ch linear)		.TIF



Click this checkbox when you want to save the image without changing the name.



Enter the number of digits in the sequential number that attaches to the file and the starting number used. A maximum of 9 digits can be specified.

This is text inserted before the file number. You can enter up to 12 characters. When you enter text, an example appears in the [Example] field below the text box.

\* This button does not work with the camera you are using.

Click this checkbox when saving the file after converting a RAW image to a JPEG image or TIFF image adds one of the following at the end of the file name.

Conversion Format	Conversion Format Name
JPEG	RJ
TIFF (8bit/ch)	RT8
TIFF (16bit/ch, 16bit/ch linear)	RT16, RT16L

## Extracting JPEG Images from RAW Images

- A JPEG image simultaneously recorded with a RAW image can be extracted and saved.
- **This function is only available with RAW images of the EOS 10D and EOS DIGITAL REBEL/300D DIGITAL and EOS D60.**
- The EOS DIGITAL REBEL/300D DIGITAL and EOS D60 simultaneously record a Middle/Fine JPEG image and the EOS 10D simultaneously records the JPEG image set up in the camera.
- The contents that can be set are the same as [Save folder] and [File Name] of "Saving Images" (W-41).

**1** Select the RAW image from which a JPEG image is to be extracted. (W-25)

**2** Click the [Save File] button and select [Extract Save JPEG] from the menu that appears.

→ The [Extract & save JPEG] dialog box appears.



**3** Specify the desired settings and click the [OK] button.

→ The JPEG image is saved in the selected folder.

W

3

Working with Images in the EOS Viewer Utility

# Transferring Images to Retouching Software

You can transfer the images displayed in the EOS Viewer Utility to retouching software. The descriptions given here use Adobe Photoshop 7.0, as an example.

- In order to transfer images, you will need retouching software such as Adobe Photoshop.
- Be sure to specify the image transfer settings before transferring images.

## 1 Click the [Transfer images] button.

→ The [Image Transfer] dialog box appears.



## 2 Click the [Browse] button.

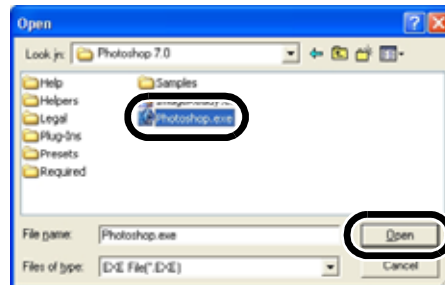
→ The [Open] dialog box appears.



## 3 Select the retouching software (Photoshop 7.0) to which the image will be transferred.

- Select the [C:] drive ► [Program Files] ► [Adobe] ► [Photoshop 7.0] ► [Photoshop]. Then click the [Open] button.

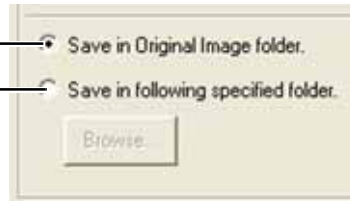
→ Photoshop is specified and the dialog box closes.



## 4 Select the radio button and then select a folder in which the images to be transferred will be saved.

The images to be transferred are saved as new images in the same folder.

Click the [Browse] button and then select a folder in which the images to be transferred will be saved.



## 5 Specify [Output settings] and [File Name] and then click the [OK] button.



- See “Saving Images” (W-41) for the procedure for specifying [Output settings] and [File Name].
- Photoshop starts up and displays the transferred images.
- The transferred images are saved in the folder that you have selected in step 4.



- It is recommended that you should use the retouching software (third-party product) that supports 16-bit images for the one to be specified for the transfer image function.
- When you convert RAW images to the TIFF format and transfer them, the specified color space data (W-40) is attached to each of the images as the ICC profile automatically.
- Alternatively, you can perform the same operation using the menu that appears by right-clicking.

W

3

Working with Images in the EOS Viewer Utility

# Specifying the Preferences

You can specify the preferences for the EOS Viewer Utility.

## 1 Select the [File] menu ► [Preferences].

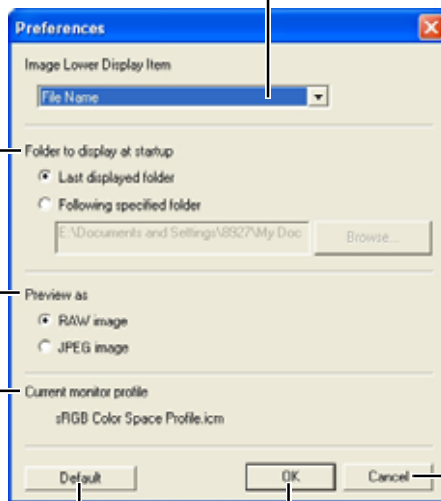
→ The [Preferences] dialog box appears.

## 2 Specify the settings and click the [OK] button.

→ The settings are applied and the [Preferences] dialog box closes.

Allows you to select whether the folder that was opened the last time is displayed or the specified folder is always displayed when the EOS Viewer Utility starts up.

Select the information to be displayed below images from [File Name] and [Shooting Date/Time]



Restores the settings to the default settings.

Applies the settings and closes the [Preferences] dialog box.

Restores the settings to their original ones and closes the [Preferences] dialog box.

Displays the monitor profile set in the operating system. Settings are made in the operating system.

Select whether the image displayed in the preview window is the RAW image or the simultaneously recorded JPEG image.

\* Only compatible with EOS 20D RAW+JPEG images and EOS 10D, EOS DIGITAL REBEL/300D DIGITAL and EOS D60 RAW images.



You can also select in the preview window whether the image displayed is the RAW image or the simultaneously recorded JPEG image (W-22).

# Setting the IPTC Information

IPTC stands for International Press Telecommunications Council and refers to a standard for communications and information exchange tags attached to images. The standard was established by newspaper and communications companies to allow problem-free transmission of images.

You can attach this IPTC information to JPEG images, or to TIFF and JPEG images that were converted from RAW images and saved with the EOS Viewer Utility. You can also save the IPTC information on your computer, and then load the saved information and apply it to other images.

W

**1 Select a JPEG or a TIFF image (W-25).**

**2 Click the [IPTC information] button.**

→ The [IPTC information] dialog box appears.



3

**3 Enter information (W-48, W-49).**

- Select any of [IPTC-1], [IPTC-2], or [IPTC-3] tab to display the tab sheet, and enter the information.
- The entered IPTC information can be saved on the dialog box that appears by clicking the [Save As] button.
- The saved IPTC information can be loaded on the dialog box that appears by clicking the [Read] button.

**4 Click the [Save] button.**

→ The specified IPTC information is applied to the image.

**5 Click the [OK] button.**

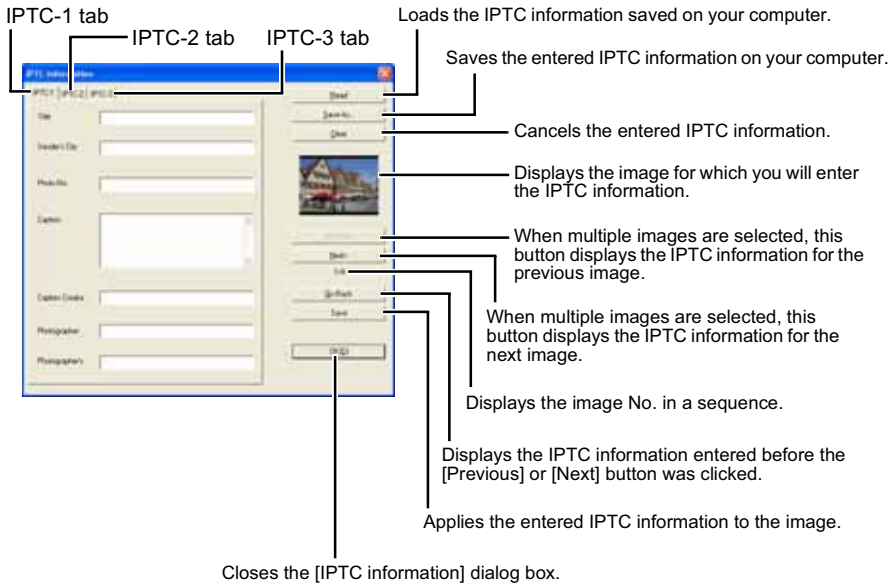
→ The [IPTC information] dialog box closes.



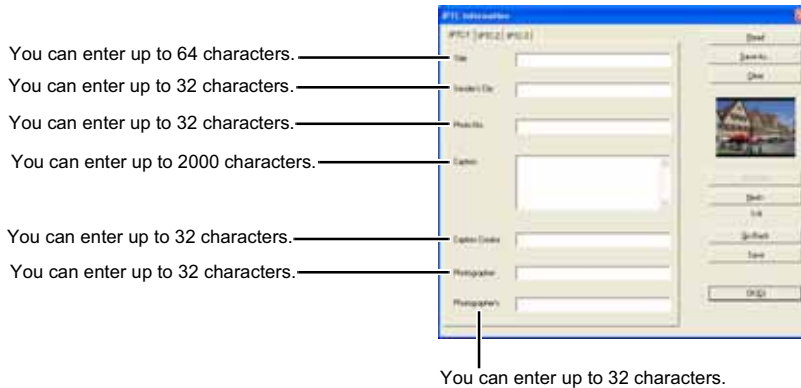
IPTC information settings data saved on your computer is compatible with the EOS Viewer Utility for both Windows and Macintosh.

Working with Images in the EOS Viewer Utility

## Setting the IPTC Information



## Settings on the [IPTC-1] tab sheet



## Settings on the [IPTC-2] tab sheet

You can enter up to 10 characters.

Select [Highest Priority (=1)], [Normal (=5)], or [Low Priority (=8)] from the list box.

You can enter up to 256 characters.

You can enter up to 8 characters.

You can enter up to 11 characters.

You can enter up to 32 characters.

W

3

Working with Images in the EOS Viewer Utility

## Settings on the [IPTC-3] tab sheet

You can enter up to 3 characters.

You can enter up to 32 characters.

You can enter up to 32 characters.

You can enter up to 256 characters.

You can enter up to 32 characters.

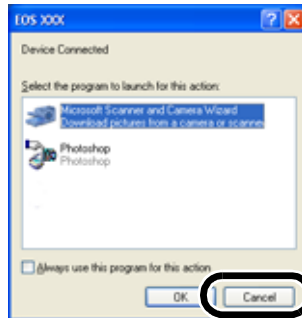
You can enter up to 32 characters.

# Specifying the Camera Settings

You can specify the owner's name and data/time in the camera.

## 1 Connect the camera to your computer (W-9).

- The dialog box on which the camera model is displayed appears.
- Your camera model is displayed in EOS XXX.
- For Windows Me, the [Scanner and Camera Wizard] dialog box appears.
- Click the [Cancel] button to close the open window.



## 2 Start up the EOS Viewer Utility (W-14).

## 3 Select the [Options] menu ► [Camera Settings].

- The [Camera Settings] dialog box appears.



## 4 Specify the settings.

This box shows the camera model, body ID (serial number) and firmware version.

Enter a value or click the [▲]/[▼] buttons to specify the date and time.

The battery level of the camera is indicated by [ ] or [ ]. When you are using the AC Adapter Kit (optional) or DC Coupler, [ ] is displayed.

Enter the name of a camera owner. You can enter up to 31 characters.

Imports the date and time from your computer.

This box shows whether a memory card is loaded in the camera along with the available space on the card and its total capacity. You can also initialize the memory card by clicking the [Format] button.

Applies the settings that you have specified to the camera and closes the [Camera Settings] dialog box.

Restores the parameters to their original ones and closes the [Camera Settings] dialog box.

W

3

- With the EOS D30, the [Parameters] button is displayed. For details on [Parameters], refer to the Software Instruction Manual supplied with your camera.

## 5 Click the [OK] button.

→ The settings are applied and the [Camera Settings] dialog box closes.

Formatting a memory card deletes all the data on the card. Because formatting also deletes protected images, you should check the data recorded on the card carefully before proceeding.

# Merging Images with the PhotoStitch

You can merge multiple JPEG images to create a panorama shot.

- 1 Click the [Start] button ► select [All Programs] ([Programs] in other versions of Windows) ► [Canon Utilities] ► [PhotoStitch] ► [PhotoStitch].

→ [PhotoStitch Launcher] appears.

- 2 Click the [Merge Images] button.



→ The PhotoStitch starts up.

- Follow the instructions in the guidance window to merge the images.
- Refer to the PhotoStitch Help menu for more details.



- You cannot merge RAW images in the PhotoStitch.
- Up to four images can be merged using the PhotoStitch.
- You will need QuickTime 3.0 or later to save merge images made using the PhotoStitch in the QuickTime VR format. If QuickTime 3.0 or later is not already installed on your computer, obtain and install it separately.

# Remote Shooting in the EOS Capture

# 4

This chapter describes how to use the EOS Capture for taking shots and specifying the camera settings remotely from your computer.

For more information on the restrictions of the EOS Capture, refer also to the source listed below.

Readme: Click the [Start] button ► select [All Programs] ([Programs] in other versions of Windows) ► [Canon Utilities] ► [EOS Capture xx] (“xx” is the version) ► [EOS Capture Readme].

- **Remote shooting in the EOS Capture is only available with the EOS 20D.**

---

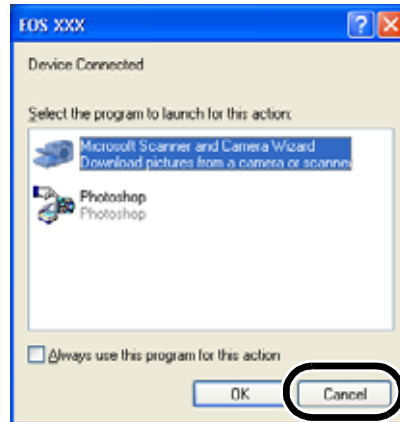
<b>Starting the EOS Capture</b> .....	<b>W-54</b>
<b>Remote Shooting</b> .....	<b>W-56</b>
Single-frame Shooting .....	W-56
Timer Shooting .....	W-57
Interval Timer Shooting .....	W-58
<b>Specifying the Camera Settings</b> .....	<b>W-59</b>
Camera Settings .....	W-59
White Balance Adjustment .....	W-61
Specifying the Save Destination .....	W-62

# Starting the EOS Capture

- Remote shooting in the EOS Capture is only available with the EOS 20D.

## 1 Connect the camera to your computer (W-9).

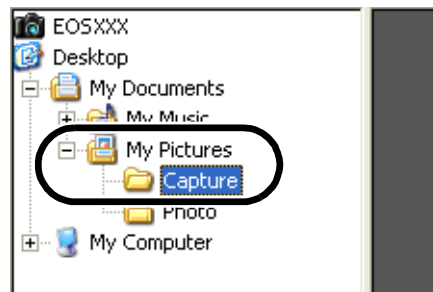
- The dialog box on which the camera model is displayed appears.
- Your camera model is displayed in EOS XXX.
- For Windows Me, the [Scanner and Camera Wizard] dialog box appears.
- Click the [Cancel] button to close the open window.



## 2 Start up the EOS Viewer Utility (W-14).

## 3 Select the folder to save the image in.

- Select a folder in the Folder Tree Area to save the image in, or create a new folder (W-18). (The [Capture] folder is created in the [My Pictures] folder here as an example.)

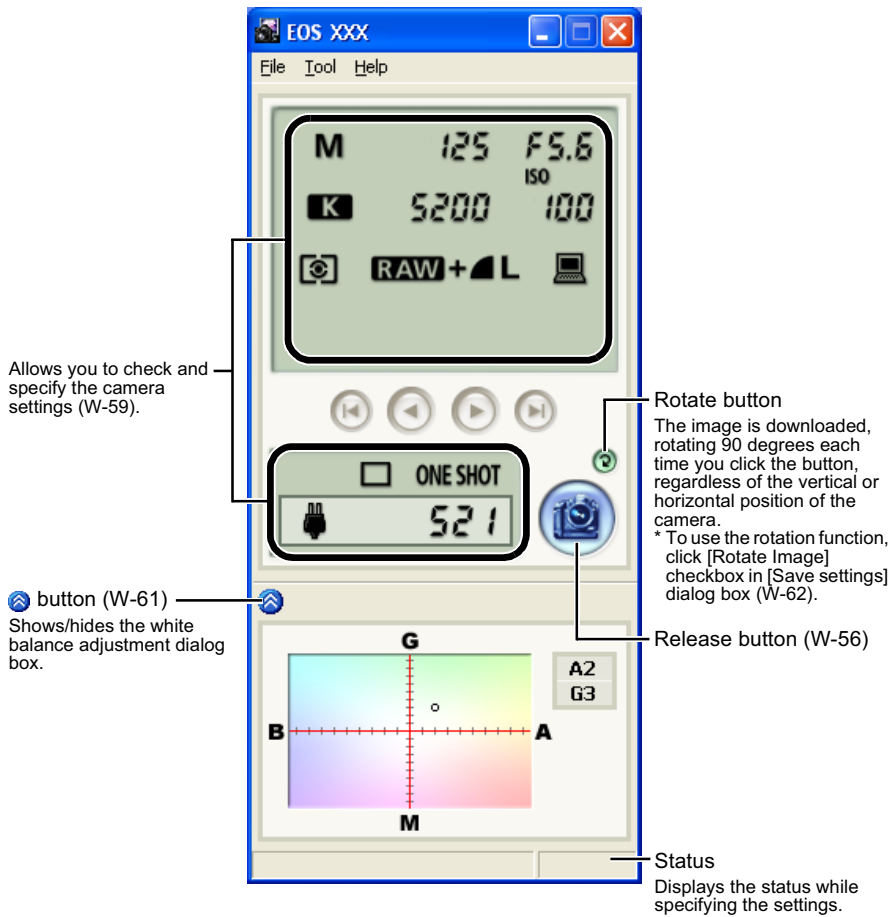


## 4 Click the [EOS Capture] button.

- The EOS Capture main window appears.



## EOS Capture main window




W

4

Remote Shooting in the EOS Capture

### 5 Click the [Release] button to take a shot (W-56).

- To exit the EOS Capture, select the [File] menu ► [Exit].

 The EOS Capture operates in conjunction with the EOS Viewer Utility. Therefore, when you exit the EOS Viewer Utility, the EOS Capture also exits.

# Remote Shooting

You can control the camera from your computer and take single-frame shots, timer shots and interval timer shots. The images are automatically saved on your computer.

## Single-frame Shooting

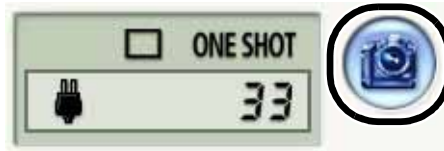
**1** Set the camera up ready to shoot.

**2** Make various settings.

- See “Camera Settings” (W-59) and “White Balance Adjustment” (W-61) for information on how to specify the camera settings.
- See “Specifying the Save Destination” (W-62) for information on how to specify the settings for saving images.

**3** Click the [Release] button.

→ The shot images are displayed in the EOS Viewer Utility and saved in your computer automatically.



**!** Before you use the Remote Shooting function, be sure to check that the camera is ready for shooting. If the camera is not ready for shooting (the lens is not attached, etc.), you cannot perform the operation as explained.

**!** Alternatively, you can press the space bar to shoot.

## Approximate Transfer Time for Shooting RAW Images

EOS 20D	Approx. 5 seconds
---------	-------------------

- The transfer time given here is only an approximation. Actual transfer time varies widely depending on the images and the computer system.
- The time for images shot in JPEG format will be shorter than those shown above.
- Transfer time is based on Canon testing standards.

(Time until images appear in the EOS Viewer Utility main window after you uncheck the [Save also on the camera's memory card] checkbox and click the [Release] button in the EOS Capture main window using the following: OS: Windows XP; CPU: 2.2 GHz Pentium 4; RAM: 256 MB)



- When the camera is set to One Shot AF, you cannot take shots if the camera cannot focus.  
If you cannot take shots with the auto focusing, focus manually and then take a shot.
- If you take remote shooting while you are using the Explorer in the WIA Driver to display images on the camera, Remote Shooting function may not operate correctly.



The number of available shots changes depending on the available capacity on your computer's hard disk. You can check the number of available shots with the [Shots to Go] (W-59).

## Timer Shooting

# 1

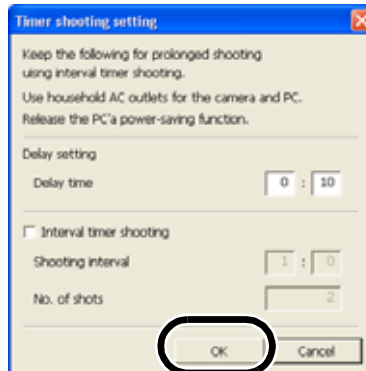
Select the [Tool] menu ► [Timer shooting].

→ The [Timer shooting setting] dialog box appears.

# 2

Enter a delay time and click the [OK] button.

- You can set a value between 0 seconds and 99 minutes 59 seconds in 1-second increments.
- Timer shooting shots are taken.

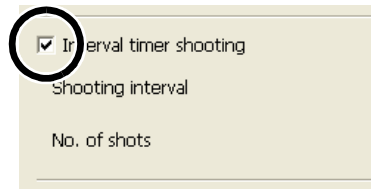


## Interval Timer Shooting

### 1 Select the [Tool] menu ► [Timer shooting].

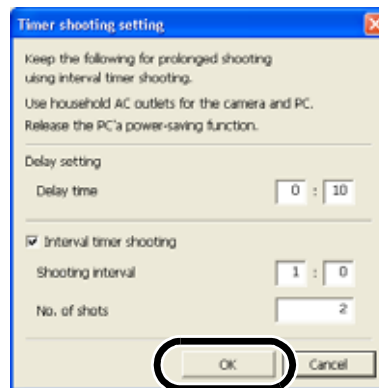
→ The [Timer shooting setting] dialog box appears.

### 2 Click the [Interval timer shooting] checkbox.



### 3 Enter the shooting interval and the number of shots. Then click the [OK] button.

- You can set a shooting interval between 5 seconds and 99 minutes 59 seconds in 1-second increments.
  - You can set up to a maximum of 1999 shots.
- Interval timer shooting is performed using the specified interval between shots and the specified number of shots.



ⓘ On some types of computers, if you set a short interval between shots and there is insufficient time to download and save the images, it may not be possible to take shots at the specified interval. If this occurs, set a longer interval between shots and take the shots again.



# Specifying the Camera Settings

You can check and change the settings in the camera from your computer remotely.

## Camera Settings

You can check and specify the camera settings.

### 1 Check the camera settings.

**Shutter speed**  
Displays/specifies Tv (shutter speed).  
(Not displayed when Aperture-priority AE or Program AE is specified for the shooting mode)

**Aperture value**  
Displays/specifies Av (aperture value).  
(Not displayed when Shutter-priority AE or Program AE is specified for the shooting mode)

**ISO Speed**  
Displays/specifies the ISO speed.

**Image recording quality**  
Displays/specifies the image recording quality.

**Save destination display**  
Displays the destination folder to which images will be saved. (When you click the [Save also on the camera's memory card] checkbox, the camera/PC icon is displayed, and when you uncheck the checkbox, the PC icon is displayed.)

**Exposure compensation**  
Displays/specifies the exposure compensation value.

**Drive mode**  
Displays the drive mode.

**AF mode**  
Displays the AF mode.

**Shots to Go**  
Displays the number of available shots.

**Warning display**  
Displayed when the remote shooting is impossible due to inappropriate settings.

**Metering mode**  
Displays/specifies the settings of the metering mode.

**White Balance**  
Displays/specifies the white balance.

**Shooting mode**  
Displays the shooting mode.

**Color temp.**  
Specify the color temperature in a range of 2800K to 10000K.

W

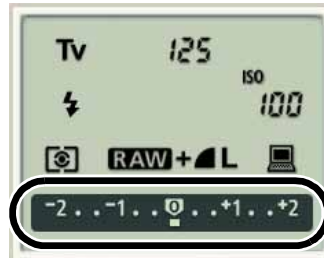
4

Remote Shooting in the EOS Capture

\* The above window shows all the information at once. In actual use, only the information needed is displayed.

## 2 Click the icon.

- The icon displayed here shows exposure compensation as an example.



## 3 Use the button to change a value.

Minimum settings button  
Specifies the minimum value.

Maximum settings button  
Specifies the maximum value.



1-step down settings button  
Allows you to decrease the value by 1 step.

1-step up settings button  
Allows you to increase the value by 1 step.

→ The changed settings are applied to the camera.

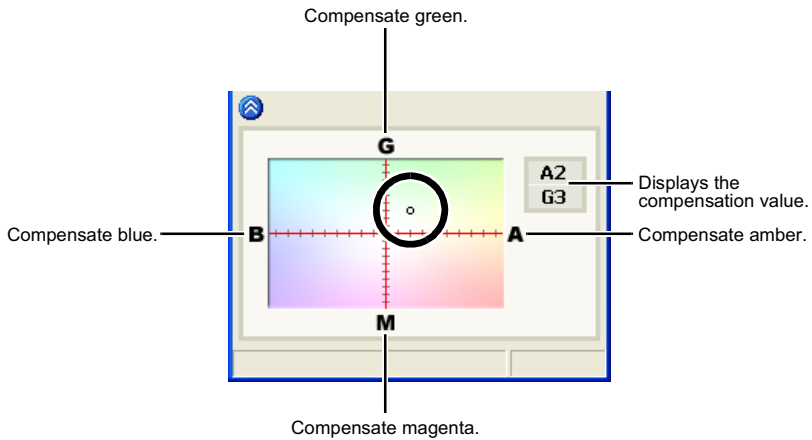
- Before you specify the settings, be sure to check that the camera is ready for shooting. If the camera is not ready for shooting (the lens is not attached, etc.), you cannot make some of the settings.
- Set functions which you cannot set with EOS Capture (drive mode, AF mode etc.) in the camera.

## White Balance Adjustment

You can compensate white balance with the blue/amber/green/magenta digital filter.

- If the dialog box has not appeared, click the [⏏] button.

### Click the compensation position.



- The changed settings are applied to the camera.

W

4

Remote Shooting in the EOS Capture

## Specifying the Save Destination

You can specify save destination files and file names.

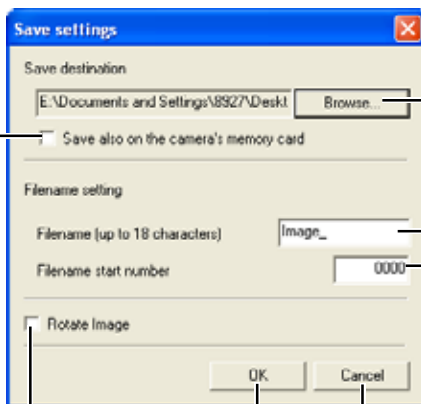
**1** Select the [File] menu ► [Save destination settings].  
→ The [Save settings] dialog box appears.

**2** Specify desired settings and click the [OK] button.

### Save settings dialog box

Clicking the checkbox also saves images on the memory card in the camera.

Allows you to change the destination folder to which images will be saved. The name of the destination folder is displayed next to the [Browse] button.



Use this field to enter a file name when saving an image. The file name can consist of up to 18 characters.

Enter a sequential number with a range of 0000 to 9999 that is added to the end of the file name.

OK Cancels all the settings, and restores the settings to their original ones.  
Cancel Applies the settings and closes the [Save settings] dialog box.

Click the checkbox to enable use of the rotation function (W-55).

# Downloading JPEG Images with the Driver

# 5

This chapter describes how to download JPEG images using the WIA Drivers for Windows XP or Windows Me, and the TWAIN Drivers for Windows 2000 or Windows 98 SE.

**A number of restrictions apply to the WIA Driver. You must read the “WIA Driver Readme” file before using the WIA Driver.**

Readme: Click the [Start] button ► select [All Programs] ([Programs] in Windows Me) ► [Canon Utilities] ► [EOS XXX WIA Driver] ► [WIA Driver Readme].

For more information on the restrictions of the TWAIN Driver, refer also to the sources listed below.

Readme: Click the [Start] button ► select [Programs] ► [Canon Utilities] ► [EOS XXX TWAIN Driver] ► [TWAIN Driver Readme].

Help: Displayed by clicking the [Help] button in the TWAIN Driver main window.

Your camera model is displayed in EOS XXX.

---

<b>Downloading Images with the WIA Driver</b> .....	<b>W-64</b>
Downloading with [Scanner and Camera Wizard] .....	W-64
Downloading with Explorer .....	W-66
Downloading with the WIA TWAIN .....	W-67
<b>Downloading Images with the TWAIN Driver</b> .....	<b>W-68</b>

# Downloading Images with the WIA Driver

You can download JPEG images using the [Scanner and Camera Wizard] dialog box, Explorer or WIA TWAIN. Windows XP users can use the same procedure to download JPEG images using the PTP function (W-12).

- See Chapter 3 to download RAW images.
- The camera name is shown in the operation screens as “EOS XXX”.

## Downloading with [Scanner and Camera Wizard]

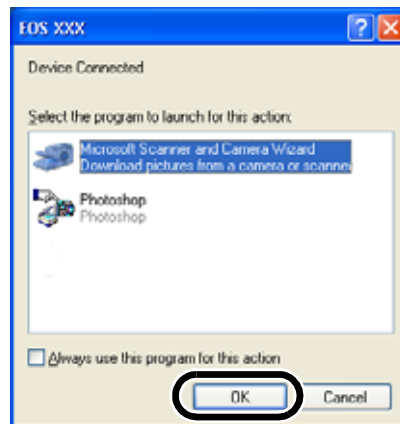
You can download JPEG images to your computer by following the instructions on the dialog boxes.

### 1 Connect the camera to your computer (W-9).

- The dialog box on which the camera model is displayed appears.
- For Windows Me, the [Scanner and Camera Wizard] dialog box appears. Proceed to step 3.

### 2 Select [Microsoft Scanner and Camera Wizard], and then click the [OK] button.

- The [Scanner and Camera Wizard] dialog box appears.



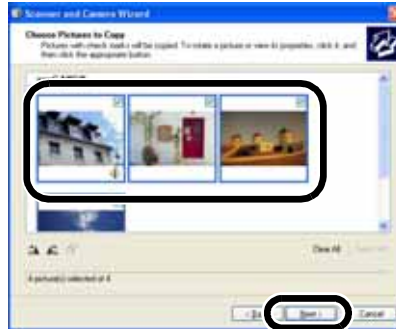
### 3 Click the [Next] button.

- The [Choose Pictures to Copy] dialog box appears.
- For Windows Me, the [Picture Selection] dialog box appears.



## 4 Select the image(s) you wish to download and click the [Next] button.

- The [Picture Name and Destination] dialog box appears.
- For Windows Me, the [Picture Destination] dialog box appears.



W

## 5 Select the destination folder, enter the file name and click the [Next] button.

- The images are downloaded and the [Other Options] dialog box appears.
- If you do not select the destination folder, a new folder is created in [My Pictures] and images are saved in that folder.
- For Windows Me, select the destination folder, enter the file name and click the [Finish] button. The images are saved and the [Picture Destination] dialog box closes.

## 6 Select the [Nothing. I'm finished working with these pictures] radio button and click the [Next] button.

- The [Completing the Scanner and Camera Wizard] dialog box appears.

## 7 Click the [Finish] button.

- The images are saved and the [Scanner and Camera Wizard] dialog box closes.



5

Downloading JPEG Images with the Driver

## Downloading with Explorer

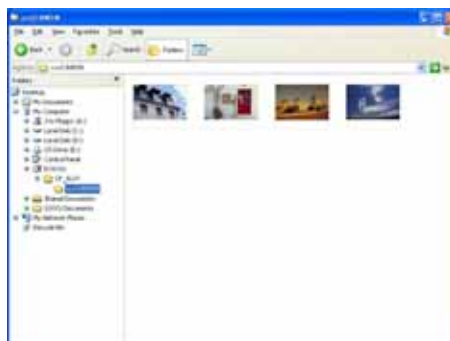
You can download JPEG images to your computer by dragging and dropping them.

### 1 Connect the camera to your computer (W-9).

- The dialog box on which the camera model is displayed and the [Scanner and Camera Wizard] dialog box appear.
- Click the [Cancel] button to close all the open windows.

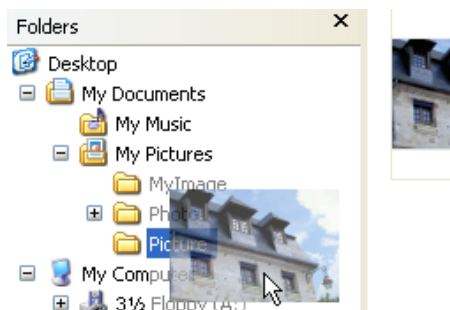
### 2 Start up Explorer and select a folder.

- You can start Explorer by right-clicking the [Start] button and selecting [Explorer] from the menu that appears.
- In the Explorer view, double-click the connected camera's icon and then click the [xxxCANON] folder (For Windows Me, double-click the [xxxCANON] folder). ("xxx" represents a number 100 to 999.)
- With the EOS D60 and EOS D30, click the camera icon.
- The camera's images will be displayed as thumbnails in the Explorer view.



### 3 Save the image.

- Drag and drop the image to the folder in the Explorer view.
- The image is saved.



⚠ If you attempt to use Remote Shooting while you are using Explorer to display images on the camera, the Remote Shooting function may not operate correctly.



## Downloading with the WIA TWAIN

You can download JPEG images to your computer by using the TWAIN Driver-compatible retouching software. The descriptions given here use Adobe Photoshop 7.0, as an example.

### 1 Connect the camera to your computer (W-9).

- The dialog box on which the camera model is displayed and the [Scanner and Camera Wizard] dialog box appear.
- Click the [Cancel] button to close all the open windows.

### 2 Start Photoshop.

- Click the [Start] button ► select [All Programs] ([Programs] in Windows Me) ► [Adobe Photoshop 7.0].
- Photoshop starts up.

### 3 Select the [File] menu ► [Import] ► [WIA-EOSXXX].

- The [Get Pictures from Canon EOS XXX] dialog box appears.

### 4 Select the image(s) you wish to download and click the [Get Pictures] button.

- The selected image(s) will be downloaded to Photoshop.



The method for starting the application and the dialog box contents differ depending on your retouching software. Refer to the retouching software User's Manual for details.

W

5

Downloading JPEG Images with the Driver

# Downloading Images with the TWAIN Driver

You can download JPEG images to your computer by using the TWAIN Driver-compatible retouching software. The descriptions given here use Adobe Photoshop 7.0, as an example.

- See Chapter 3 to download RAW images.
- The camera name is shown in the operation screens as "EOS XXX".
- Refer to the Software Instruction Manual supplied with the camera for information about the TWAIN Driver for the EOS D60 and EOS D30.

## 1 Connect the camera to your computer (W-9).

- The dialog box on which the camera model is displayed appears.
- Click the [Cancel] button to close all the open windows.

## 2 Start Photoshop.

- Click the [Start] button ► select [Programs] ► [Adobe Photoshop 7.0].
- Photoshop starts up.

## 3 Select the [File] menu ► [Import] ► [Canon EOSXXX].

- The TWAIN Driver starts and the JPEG image in the camera is displayed.
- To exit the TWAIN Driver, select the [File] menu ► [Exit].



## 4 Select the image to be transferred and select the [File] menu ► [Transfer Images].

- The image transferred to Photoshop is displayed.



- You can also transfer images by double-clicking a thumbnail image.
- The method for starting the application and the dialog box contents differ depending on your retouching software. Refer to the retouching software User's Manual for details.

# Troubleshooting and Uninstallation

# 6

This chapter provides troubleshooting and describes the software uninstallation procedures.

---

<b>Troubleshooting</b> .....	<b>W-70</b>
<b>Uninstalling the Software</b> .....	<b>W-74</b>
Uninstalling the Software .....	W-74
Uninstalling the Driver .....	W-75
<b>Index</b> .....	<b>W-76</b>

# Troubleshooting

When the “Could not complete installation correctly” or “Communication between the camera and computer failed” message appears, check the items described below.

- The camera name is shown in the operation screens as “EOS XXX”.

## Installation failed.

- **If you are using Windows XP Professional or Windows 2000, are you using the computer under a user setting other than [Computer administrator] or [Administrator]?**

→ You cannot install software if a user setting other than [Computer administrator] or [Administrator] is selected. Select the [Computer administrator] user setting in Windows XP Professional or the [Administrator] user setting in Windows 2000. For detailed information on selecting the user setting, refer to the computer User’s Manual.

- **Is the cable firmly plugged into its socket?**

→ To complete the installation, ensure that the plugs on the dedicated cable are securely plugged into the ports on the camera and computer when you connect the camera to your computer (W-9).

- **Are the camera and computer set up correctly for communication?**

→ Is the camera’s power switch set to <ON>?

→ Even when the camera’s power switch is set to <ON>, operation of the Auto power off function will automatically switch the camera off. To prevent this, set the Auto power off function to [Off]. (Refer to “Menu Operations” in the camera’s Instruction Manual.)

- **Does the [Add New Hardware Wizard] ([Found New Hardware Wizard] in Windows 2000) dialog box appear during installation?**

→ Click the [Cancel] button, disconnect the dedicated cable, and then repeat the installation procedure from the beginning.

- **Doesn’t the installer panel appear?**

→ Use the following procedure to display the installer panel.

Click the [Start] button ► [My Computer]. (In other versions of Windows, double-click [My Computer] on the desktop.) ► right-click the CD-ROM drive containing the CD ► select [Open] from the menu that appears ► double-click the icon on the right.



## I have installed the software but the camera and computer cannot communicate.

### ● Is the driver installed?

→ The driver is required for communications between the camera and computer. When you want to communicate between the camera and computer, be sure to install the driver shown below appropriate to your windows.

- Windows XP/Windows Me: WIA Driver
- Windows 2000/Windows 98 SE: TWAIN Driver

### ● Have you installed the WIA Driver or TWAIN Driver?

→ Even if you have installed the WIA Driver or TWAIN Driver, installation is not completed unless the camera is connected to the computer. Insert the Solution Disk into the CD-ROM drive, install the WIA Driver or TWAIN Driver, and then connect the camera to your computer.

### ● Does your computer comply with these requirements?

→ PC with Windows XP, Windows 2000, Windows Me or Windows 98 SE preinstalled and equipped with an a USB port.

\* Operation is not guaranteed when a connection is used on computer systems other than those listed above.

### ● Are the camera and computer connected correctly?

→ Connect the camera to your computer correctly using the dedicated cable (W-9).

### ● Is the correct communication mode selected on the camera?

→ When using the EOS 20D, EOS 10D and EOS DIGITAL REBEL/300D DIGITAL, set the camera's communication mode to [Normal]. (W-8) With the EOS 10D, you must also change the firmware to version 2.0.0 or later. For details on changing, see the Canon website.

### ● Is there sufficient charge left in the camera battery?

→ Your computer does not supply power to the camera. With the EOS 20D, EOS 10D and EOS DIGITAL REBEL/300D DIGITAL, connect to the camera with an AC Adapter Kit (optional). With the EOS D60 and EOS D30, Connect to the camera with the DC Coupler supplied. Or, load a fully charged battery into the camera before connecting it to your computer.

### ● Do you have more than one camera connected to your computer?

If you connect more than one camera to the same computer, the driver and camera may not operate normally.

→ Exit the software and disconnect all the dedicated cables. Then connect only one camera to the same computer again.

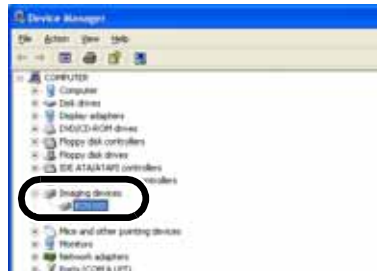
W

6

Troubleshooting and Uninstallation

● **Is the driver operating normally?**

Connect the camera to your computer with the dedicated cable and set the camera's power switch to <ON> (W-9) and open [Device Manager] (W-73). Click the plus symbol [+] to the left of [Imaging devices] and check that the connected camera is displayed.



→ If the connected camera is not displayed, the driver is not operating normally. Briefly disconnect and then reconnect the dedicated cable, ensuring that the connection is secure. If the connected camera still does not appear, use the following procedure to re-install the driver.

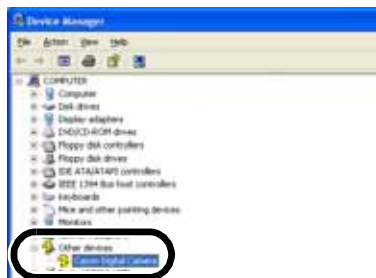
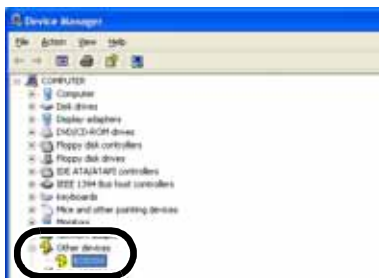
- 1 Disconnect the dedicated cable and delete the driver (W-75).
- 2 Re-install the driver (W-4).

→ When the [X], [!] or [?] symbol is displayed beside the connected camera, part of the driver is missing or corrupted. Use the following procedure to re-install the driver.

- 1 Delete the camera displayed in [Imaging devices].
- 2 Disconnect the dedicated cable and delete the driver (W-75).
- 3 Re-install the driver (W-4).

● **Is the driver installed correctly?**

Connect the camera to your computer with the dedicated cable and set the camera's power switch to <ON> (W-9) and open [Device Manager] (W-73). Click the plus symbol [+] to the left of [Other devices] or [Unknown devices] and check whether the connected camera or [Canon Digital Camera] is displayed.



- If the connected camera or [Canon Digital Camera] is displayed in [Other devices] or [Unknown devices], the driver was not installed correctly. Use the following procedure to re-install the driver.
- 1 Delete the camera or [Canon Digital Camera] displayed in [Other devices] or [Unknown devices].
  - 2 Disconnect the dedicated cable and delete the driver (W-75).
  - 3 Re-install the driver (W-4).

## I connected the camera to the computer before installing the software

W

### ● Did you set the camera's power switch to <ON>?

- If you did not set the camera's power switch to <ON>, proceed as follows:
- 1 Disconnect the dedicated cable from the camera and computer.
  - 2 Install the Solution Disk software on your computer using the correct installation procedure (W-4) and then connect the camera to your computer to complete the installation (W-9).
- If you set the camera's power switch to <ON>, proceed as follows:
- 1 If [Found New Hardware Wizard] or any other dialog boxes appear, click the [Cancel] buttons to cancel all the dialog boxes.
  - 2 Set the camera's power switch to <OFF>.
  - 3 Disconnect the dedicated cable from the camera and computer.
  - 4 Install the Solution Disk software on your computer using the correct installation procedure (W-4) and then connect the camera to your computer to complete the installation (W-9).

## To Display the Device Manager

### ● Windows XP

- Click the [Start] button ► select [Control Panel] ► [Performance and Maintenance] ► [See basic information about your computer]. Then select the [Hardware] tab and click the [Device Manager] button.

### ● Windows 2000

- Click the [Start] button ► select [Settings] ► [Control Panel]. Then double-click the [System] icon to open and select the [Hardware] tab and click the [Device Manager] button.

### ● Windows Me and Windows 98 SE

- Click the [Start] button ► select [Settings] ► [Control Panel]. Then double-click the [System] icon to open and select the [Device Manager] tab.

6

# Uninstalling the Software

- Before beginning the uninstallation, exit all programs you are using and disconnect the dedicated cable from your computer.

## Uninstalling the Software

The following uses the procedures for uninstalling the EOS Viewer Utility as an example for uninstalling other programs as well.

- For Windows XP Professional or Windows 2000, log in using computer Administrator privileges.
- Before beginning the uninstallation, exit all programs you are using and disconnect the dedicated cable from your computer.
- To prevent computer malfunctions, always restart your computer after you have uninstalled the software. Re-installing the software without first restarting your computer is likely to result in computer malfunctions.

---

**1** Click the [Start] button ► select [All Programs] ([Programs] in other versions of Windows) ► [Canon Utilities] ► [EOSViewerUtility xx] ► [EOSViewerUtility Uninstall].

- The EOS Viewer Utility version information is displayed in xx.

**2** Proceed with the uninstallation as directed by the on-screen messages.

- Software is uninstalled.



## Uninstalling the Driver

This section explains how to uninstall the EOS 20D driver. For cameras other than the EOS 20D, please refer to the Software Instruction Manual supplied with the camera.

- For Windows XP Professional or Windows 2000, log in using computer Administrator privileges.
- Before beginning the uninstallation, exit all programs you are using and disconnect the dedicated cable from your computer.
- The camera name is shown in the operation screens as “EOS XXX”.

W

### 1 Uninstall [EOS XXX WIA Driver] or [EOS XXX TWAIN Driver].

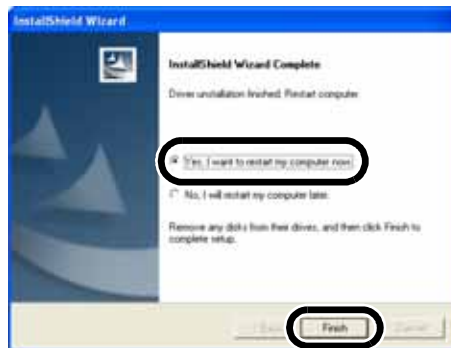
- Your camera model is displayed in EOS XXX.
- For Windows XP or Windows Me, click the [Start] button ► select [All Programs] ([Programs] in Windows Me) ► [Canon Utilities] ► [EOS XXX WIA Driver] ► [WIA Driver Uninstall].
- For Windows 2000 or Windows 98 SE, click the [Start] button ► select [Programs] ► [Canon Utilities] ► [EOS XXX TWAIN Driver] ► [TWAIN Driver Uninstall].

### 2 Proceed with the uninstallation as directed by the on-screen messages.

→ The driver is uninstalled.

### 3 Restart the computer

- When the dialog box on the right appears, select [Yes, I want to restart my computer now.] radio button and click [Finish] button.
- When the computer is restarted, uninstalling of the driver is completed.



6

Troubleshooting and Uninstallation

# Index

## A

- About the PTP Setting .....W-8
- Adjusting the White Balance
  - Click White Balance Function .....W-36
  - Correcting the White Balance .....W-37
  - Selecting the White Balance .....W-34
  - Specifying the Color Temperature ....W-35
- Attaching Check Marks to Images .....W-26

## C

- Camera Settings
  - Intializing the Memory Card .....W-51
  - Specifying the Date and Time .....W-51
  - Specifying the Owner's Name .....W-51
- Checking the AF Point .....W-24
- Checking the Image Information and Entering Comments .....W-29
- Color Adjustment
  - Adjusting the Color Tone .....W-38
  - Filter Effect .....W-39
  - Selecting the Color Saturation .....W-38
  - Toning Effect .....W-39
- Connecting the Camera to Your Computer
  - Connecting the Camera to Your Computer for the First Time .....W-9
  - Connecting the Camera to Your Computer the Second Time or Later .....W-10

## D

- Deleting Images .....W-29
- Digital Exposure Compensation .....W-33
- Downloading Images .....W-18
- Downloading Images with the TWAIN Driver .....W-68
- Downloading Images with the WIA Driver .....W-64
- Downloading JPEG Images Using the PTP Function in Windows XP .....W-12

## E

- Editing Images .....W-28
- Editing RAW Images .....W-31

W-76

- EOS Capture Main Window .....W-55
- EOS Viewer Utility Main Window .....W-15
- Extracting JPEG Images from RAW Images .....W-43

## I

- ICC Profile .....W-40, W-41
- Installing the Software .....W-4

## M

- Main Functions of the Software .....4
- Merging Images with the PhotoStitch ....W-52

## O

- Operation Flow .....5

## P

- Preview Window .....W-22
- Printing Images .....W-30
- Processing RAW Images .....W-31
- Protecting Images .....W-28

## R

- RAW Adjustment Tool Palette .....W-17
- Remote Shooting
  - Interval Timer Shooting .....W-58
  - Single-frame Shooting .....W-56
  - Timer Shooting .....W-57
- Rotating Images .....W-28

## S

- Saving Images .....W-41
- Selecting Images
  - Selecting Images in the Main Window .....W-25
  - Selecting Images in the Preview Window .....W-25
- Selecting Images by Condition .....W-26
- Selecting the Contrast .....W-37
- Selecting the Display Size .....W-24
- Selecting the Sharpness .....W-40
- Setting the Communication Mode .....W-8
- Setting the IPTC Information .....W-47

Specifying the Camera Settings (EOS Capture)	
Adjusting the White Balance .....	W-61
Camera Settings .....	W-59
Save Settings .....	W-62
Specifying the Color Space .....	W-40
Specifying the Preferences .....	W-46
Specifying the Processing Parameters ..	W-32
Starting the EOS Capture .....	W-54
Starting the EOS Viewer Utility .....	W-14
Supported Image Formats .....	W-19
System Requirements .....	W-2
<b>T</b>	
Thumbnail Display .....	W-22
Transferring Images to Retouching	
Software .....	W-44
Troubleshooting .....	W-70
<b>U</b>	
Uninstalling	
Driver .....	W-75
Software .....	W-74

W

6

Troubleshooting and Uninstallation



# Macintosh



Where explanations are common to all operating systems, the screens used in the examples are from Mac OS X (10.2). In this chapter, Mac OS X and Mac OS 9.2 are referred to as OS X and OS 9 respectively.

## 1 Installing the Software ..... M-3

Describes how to install the bundled software.

## 2 Preparation for Downloading Images ..... M-7

Explains how to set up communication mode, and how to connect the camera or a card reader (third-party product) to your computer.

## 3 Working with Images in the EOS Viewer Utility ..... M-13

Explains how to use the EOS Viewer Utility to download images to your computer, edit and save images, and transfer the downloaded images to the retouching software.

## 4 Remote Shooting in the EOS Capture ..... M-53

Describes how to use the EOS Capture for taking shots and specifying the camera settings remotely from your computer.

- **Remote shooting in the EOS Capture is only available with the EOS 20D.**
- **The EOS Capture is only compatible with OS X.**

## 5 Troubleshooting and Uninstallation ..... M-63

Provides a troubleshooting and describes the software uninstallation procedures.

Index ..... M-67

# System Requirements

The software bundled with this product runs on the systems described below.

<b>OS</b>	Mac OS X 10.1 to 10.3, Mac OS 9.0 to 9.2
<b>Computer</b>	Macintosh with one of the above OS installed and a USB port as a standard feature * Users of first-generation iMacs require a firmware update.
<b>CPU</b>	Power PC
<b>RAM</b>	Mac OS X 10.1 to 10.3: Minimum 256 MB Mac OS 9.0 to 9.2: Minimum 128 MB
<b>Interface</b>	USB 1.1 to 2.0 Hi-Speed*
<b>Hard disk space</b>	EOS Viewer Utility: 100 MB or more EOS Capture: 300 MB or more PhotoStitch: 30 MB or more
<b>Display</b>	Resolution: 1024 × 768 or more Colors: Thousands or more

- **The EOS Capture is only compatible with Mac OS X.**
  - **Because the EOS Viewer Utility for Mac OS 9 has no function for communication with the camera, you cannot download images from the camera (M-18) or specify camera settings (M-50).**
  - These software programs are not compatible with UFS (Unix File System) formatted disks on Mac OS X.
  - A CD-ROM drive is required for installation.
- \* Only the EOS 20D is compatible with USB 2.0 Hi-Speed.



# Installing the Software

This chapter describes how to install the bundled software.

M

---

Installing the Software .....	M-4
-------------------------------	-----

1

# Installing the Software

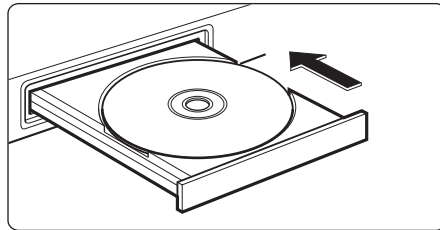
- Check that your Macintosh complies with the system requirements for the software (M-2) as you follow the installation procedure.

## 1 Start up your Macintosh.

- Quit any programs that are running.

## 2 Insert the CD (EOS DIGITAL Solution Disk).

- The CD icon appears on the desktop.



## 3 Start installation.

- Double-click the CD icon ► the [Mac OS X] folder. Then double-click the icon on the right.
- For OS 9, double-click the [Mac OS 9] folder in the CD window and then double-click the icon on the right.
- The Installer panel appears.

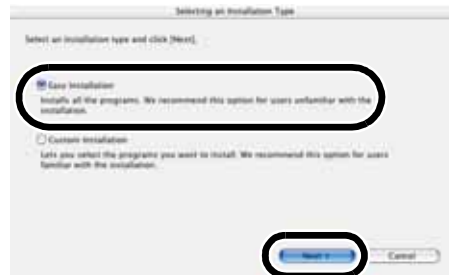


## 4 Click the [Install] button.



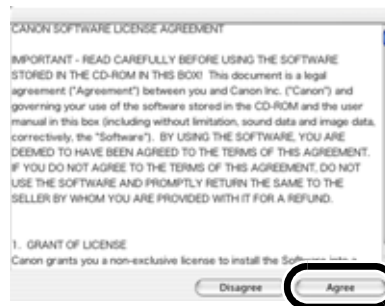


## 5 Select [Easy Installation] and click the [Next] button.



M

## 6 Check the details of the License Agreement and then click the [Agree] button.



1

Installing the Software

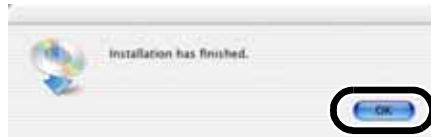
## 7 Check the folder in which the software will be installed and then click the [Next] button.

→ Installation begins. It takes approximately 2 to 3 minutes.



## 8 Finish the installation.

- Click the [OK] button.
  - After clicking the [OK] button in OS 9, the restart dialog box appears. Click [Yes] button to restart your computer.

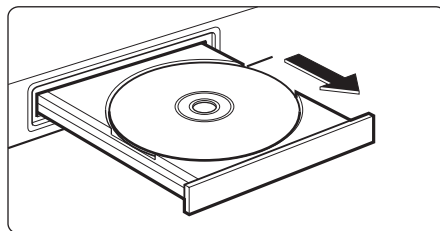


## 9 Click the [Exit] button.



## 10. Once the installation is complete, remove the CD.

- Continue by setting up communication mode and connecting the camera and computer in Chapter 2.



# Preparation for Downloading Images



This chapter explains how to set up communication mode, and how to connect the camera or a card reader (third-party product) to your computer.

---

<b>Setting the Communication Mode.....</b>	<b>M-8</b>
<b>Connecting the Camera to Your Computer.....</b>	<b>M-9</b>
<b>Using Your Card Reader .....</b>	<b>M-11</b>
<b>Downloading JPEG Images Using the PTP Function in OS X (10.1 or later) .</b>	<b>M-12</b>

# Setting the Communication Mode

To communicate with the camera using the software on the Solution Disk, set the camera's communication mode to [Normal].

- The settings on this page are only necessary for the EOS 20D, EOS 10D and EOS DIGITAL REBEL/300D DIGITAL.
- With the EOS 10D, you must change the firmware to version 2.0.0 or later. For details on changing, see the Canon website.

**1 Check that the camera is not connected to the computer and then set the camera's power switch to <ON>.**

**2 Set the camera's communication mode to [Normal].**

- Set [Communication] in menu to [Normal].
- With the EOS DIGITAL REBEL/300D DIGITAL, set [Communication] in menu option <T2> to [Normal].



**3 Press the <MENU> button to switch the LCD monitor display off and then set the camera's power switch to <OFF>.**

- If you set the communication mode to [PTP], the Solution Disk software cannot communicate with the camera. When you are using the software, always set the communication mode to [Normal].
- When setting the communication mode, always ensure that the camera is not connected to the computer beforehand. Setting the communication mode while the camera is connected to the computer will cause camera and software malfunctions.

## About the PTP Setting

The PTP function is only available to OS X users. This function provides a simple means of downloading JPEG images to your computer. To use this function, set [Communication] to [PTP] in step 2 above.

- For more information on using the PTP function to download JPEG images, see "Downloading JPEG Images Using the PTP Function in OS X (10.1 or later)" (M-12).

# Connecting the Camera to Your Computer

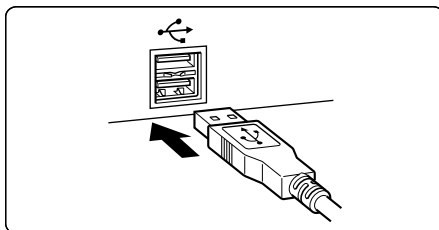
Before downloading images to your computer or specifying the camera settings, you must connect the camera to your computer with the dedicated USB cable.

You can connect the camera while your computer is running.

- With the EOS Viewer Utility for OS 9, you cannot download images (M-18), specify camera settings (M-50), or take shots remotely (M-53) by connecting the camera and your computer.

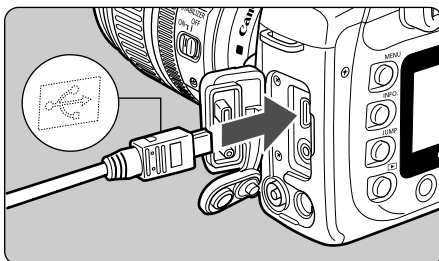
## 1 Plug the dedicated cable into the computer.

- Plug the cable into the USB port.
- Refer to the computer User's Manual for information on the terminal areas.



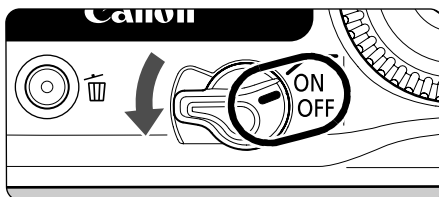
## 2 Plug the dedicated cable into your camera.

- Open the cover and connect the cable to the <DIGITAL> terminal with the [↔] icon facing the front of the camera.
- With the EOS D60 and EOS D30, connect by aligning the <▶> mark on the plug with the <▶> mark on the <DIGITAL> terminal.



## 3 Set the camera's power switch to <ON>.

- The camera is now ready to communicate with your computer.
- Proceed to Chapter 3 continuously.



M

2

Preparation for Downloading Images



- Never perform the following operations while the software installed from the Solution Disk is running after connecting the camera to the computer as a communications error may occur.
  - Set the camera's power switch to <OFF>.
  - Open the CF card slot cover.
  - Disconnect the dedicated cable, remove the battery, and then remove the AC adapter kit (optional) or DC coupler.
  - Disconnect the AC adapter's or DC coupler's plug or power cord.Before you perform the operations above, be sure to quit all the software.
- You cannot communicate with the camera when you are displaying images through the camera's LCD monitor. Always connect the camera and your computer after turning off the display in the LCD monitor.
- While the camera and your computer are communicating, the camera's LCD panel may blink.
- Use only the dedicated cable.
- Push the plug firmly all the way into the socket. Loose connections can cause faults or malfunctions.
- Do not connect the camera to your computer via a hub. If you do so, the camera may not operate correctly.
- If you connect multiple USB devices (excluding mouse and keyboard) to your computer, the camera may not operate correctly. Disconnect other USB devices from your computer and connect only the camera.
- Operation of the Auto power off function will automatically switch the camera off, disabling to communicate with your computer. Set the Auto power off function to [OFF] in advance. (Refer to "Menu Operations" in the camera's Instruction Manual.)
- Do not connect more than one camera to the same computer. The connections may not operate correctly.
- When unplugging the dedicated cable, be sure to grip the sides of the plug as you pull it out.
  - \* If you are using the EOS D60 or EOS D30, pull the plug while pressing the PUSH button on it.
- If you do not perform any operation while the camera and computer are connected, a confirmation message appears on the computer screen asking whether you wish to continue communicating with the camera for some computer systems. If you do not perform any operation even after this message appears, the communication with the camera is terminated. To re-establish the communication, press the shutter button down halfway or set the camera's power switch to <OFF> and then back to <ON>.
- Do not put your computer to sleep while it is connected to the camera.

If your computer goes into the sleep mode, never disconnect the dedicated cable while your computer is still in sleep mode. Always wake your computer up while it is connected to the camera. On some types of computer, disconnecting the dedicated cable while your computer is in sleep mode could prevent the computer from waking up correctly. Refer to the computer User's Manual for more information on sleep mode.



When you connect the camera and your computer, it is recommended that you use an AC adapter kit (optional) with the EOS 20D, EOS 10D and EOS DIGITAL REBEL/300D DIGITAL, and the DC coupler supplied with the EOS D60 and EOS D30.

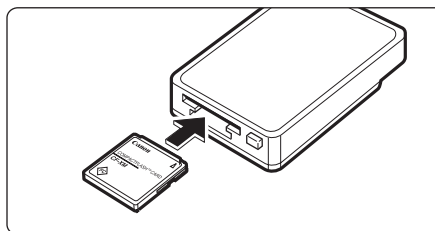
## Using Your Card Reader

Users with a third-party card reader can download images directly from a memory card to the computer.

**1** Remove the memory card from the camera.

**2** Load the card into the card reader.

- Proceed to Chapter 3 continuously.



For information on connecting the card reader to your computer, refer to the card reader User's Manual.

**M****2**

Preparation for Downloading Images

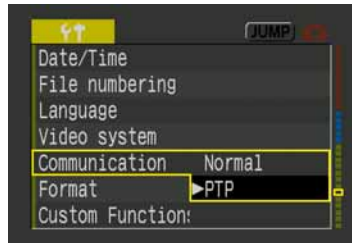
# Downloading JPEG Images Using the PTP Function in OS X (10.1 or later)

Users of OS X (version 10.1 or later) can use the PTP (Picture Transfer Protocol) function. The PTP function allows you to download JPEG images saved on a memory card in the camera to your computer without having to start the software provided on the Solution Disk.

- This function is available with the EOS 20D, EOS 10D and EOS DIGITAL REBEL/300D DIGITAL only.
- With the EOS 10D, you must change the firmware to version 2.0.0 or later. For details on changing, see the Canon website.

## 1 Set the camera's communication mode to [PTP] (M-8).

- Set [Communication] in menu to [PTP].
- With the EOS DIGITAL REBEL/300D DIGITAL, set [Communication] in menu option <M2> to [PTP].
- Press the <MENU> button to clear the LCD monitor display.
- When you have finished, set the camera's power switch to <OFF>.



## 2 Connect the camera to the computer and set the camera's power switch to <ON> (M-9).

- Image Capture or iPhoto starts up.
- You can specify which software starts up in Image Capture.



## 3 Download the images as directed.

- Follow the instructions in the on-screen messages to download the JPEG images.

ⓘ Refer to the separate "Notes on the PTP Function" for details when the downloaded image does not display correctly or the image cannot be downloaded.

- ⓘ ● To specify the software that will start up when the camera is connected to the computer, start up Image Capture and select [Preference] in the [Image Capture] menu. In the [Image Capture Preference] dialog box, select the application in the [When a camera is connected, open] list box.
- Image Capture and iPhoto are software bundled with OS X. For detailed information on using these applications, refer to the Help provided in the respective application.



# Working with Images in the EOS Viewer Utility



This chapter explains how to use the EOS Viewer Utility to download images to your computer, edit and save images, and transfer the downloaded images to the retouching software.

For more information on the restrictions of the EOS Viewer Utility, refer also to the source listed below.

ReadMe: Double-click the [Canon Utilities] folder ► the [EOS Viewer Utility] folder ► [ReadMe].

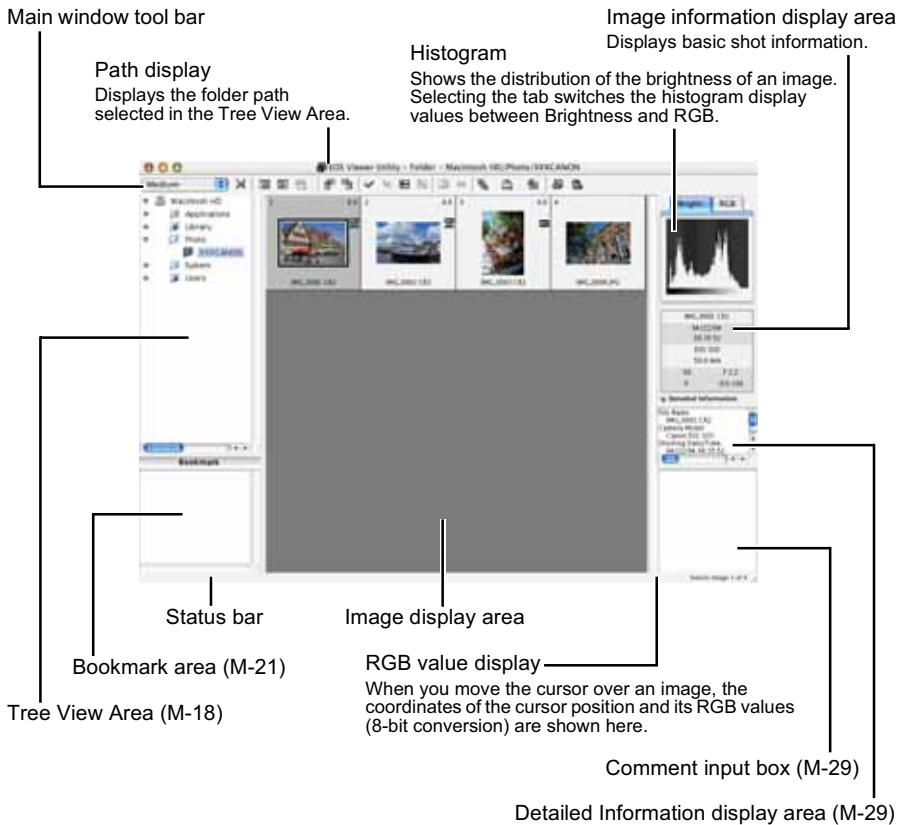
<b>Starting the EOS Viewer Utility....</b>	<b>M-14</b>	Deleting Images.....	M-29
<b>Downloading Images .....</b>	<b>M-18</b>	Checking the Image Information and	
<b>Handling the Folders .....</b>	<b>M-20</b>	Entering Comments .....	M-29
Memory Card Folder Structure and File		<b>Printing Images.....</b>	<b>M-30</b>
Names .....	M-20	<b>Editing RAW Images .....</b>	<b>M-31</b>
Registering Frequent Use Folder ...	M-21	Processing RAW Images .....	M-31
<b>Selecting the Image Display Mode ...</b>	<b>M-22</b>	Specifying the Processing Parameters ..	M-32
Main Window (Thumbnail Display)...	M-22	Adjusting the Brightness (Digital	
Preview Window Display.....	M-22	Exposure Compensation) .....	M-33
Selecting the Display Size .....	M-24	Adjusting the White Balance.....	M-34
Checking the AF Point .....	M-24	Selecting the Contrast .....	M-37
<b>Selecting Images .....</b>	<b>M-25</b>	Adjusting the Color .....	M-38
Selecting Images in the Main Window ..	M-25	Specifying the Color Space .....	M-40
Selecting Images in the Preview Window ..	M-25	Selecting the Sharpness.....	M-40
Attaching Check Marks to Images...M-26		<b>Saving Images .....</b>	<b>M-41</b>
Selecting Images by Condition ...	M-26	Extracting JPEG Images from RAW	
Bringing/Sending the Main Window to		Images .....	M-43
the Front/Back of Window Stack...M-27		<b>Transferring Images to Retouching</b>	
Equalizing the Display Sizes of the		<b>Software .....</b>	<b>M-44</b>
Preview Window .....	M-27	<b>Specifying the Preferences .....</b>	<b>M-46</b>
<b>Editing Images .....</b>	<b>M-28</b>	<b>Setting the IPTC Information .....</b>	<b>M-47</b>
Protecting Images .....	M-28	<b>Specifying the Camera Settings....</b>	<b>M-50</b>
Rotating Images.....	M-28	<b>Merging Images with the PhotoStitch ...</b>	<b>M-52</b>

# Starting the EOS Viewer Utility

---

- 1** Connect the camera to your computer (M-9).
- 2** Double-click the [Canon EOS Viewer Utility] icon on the desktop.
  - The main window appears.
  - You can also start the EOS Viewer Utility by double-clicking the [Canon Utilities] folder ► the [EOS Viewer Utility] folder ► the [EOS Viewer Utility] icon.

## Main window

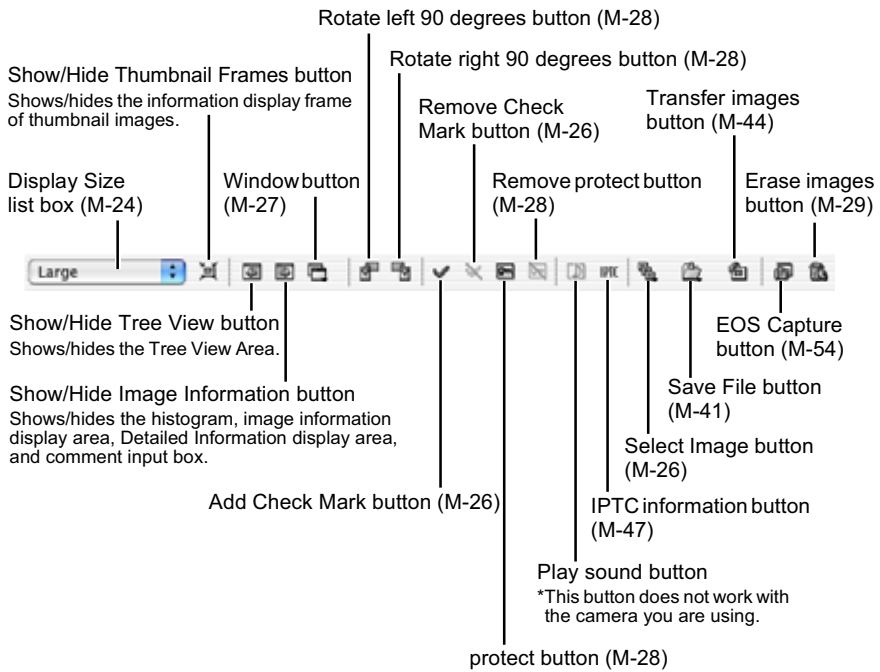


- For OS X, to quit the EOS Viewer Utility, select the [EOS Viewer Utility] menu ► [Quit EOS Viewer Utility].
- For OS 9, to quit the EOS Viewer Utility, select the [File] menu ► [Quit].

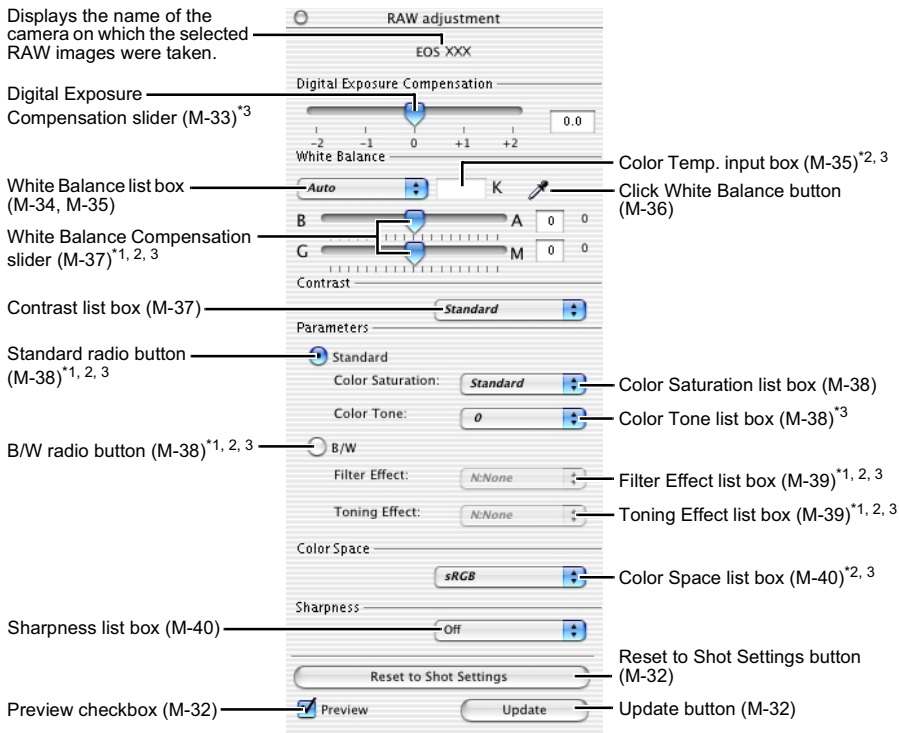
M

3

## Main window tool bar



## RAW adjustment tool palette



- When you select a RAW image, the name of the camera on which the selected RAW image was taken and its settable processing parameters are displayed.

\*1 **Not displayed with the EOS 10D and EOS DIGITAL REBEL/300D DIGITAL.**

\*2 **Not displayed with the EOS D60 RAW images.**

\*3 **Not displayed with the EOS D30 RAW images.**



- Where you have selected a JPEG image or where you have selected a TIFF or JPEG image converted from a RAW image with the EOS Viewer Utility, nothing is displayed on the RAW adjustment tool palette and the image cannot be edited.
- Where you have selected a RAW image saved on the memory card inside the camera, nothing is displayed on the RAW adjustment tool palette and the image cannot be edited. Work with the images saved on your computer from the memory card.



- The settings used when shots were taken are displayed in italic or bold type in the list box.
- If the RAW adjustment tool palette is hidden, select the [View] menu ► [Tool palette] to show it.

M

3

# Downloading Images

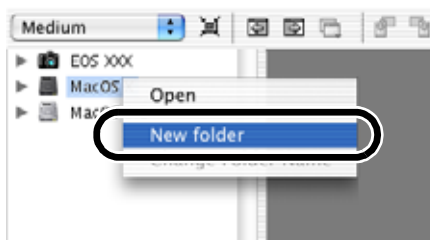
The procedure below describes how to download (copy) the images saved on a memory card in the camera to your computer, and display them on the main window. You can download images in the Tree View Area.

- **This function is only available with the EOS Viewer Utility for OS X.**

With the EOS Viewer Utility for OS 9, you cannot download images saved on a memory card inside the camera. Download images to your computer by either using the EOS Viewer Utility for OS X or by using a third-party card reader.

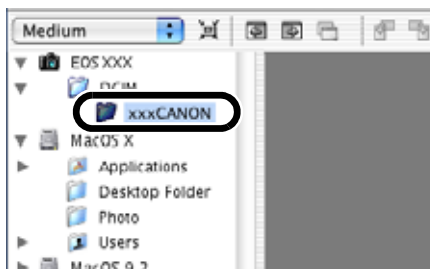
## 1 Create a folder to which images will be downloaded.

- From the menu that is displayed by clicking on the destination folder while pressing the <control> key, select [New folder] to create a folder and enter a name for the folder. (Enter [Photo] in the folder name field here as an example.)



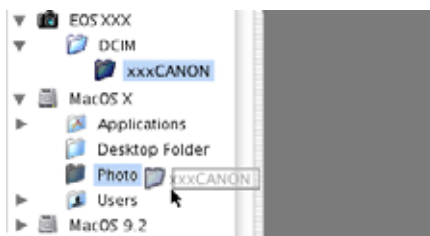
## 2 Display a folder to be copied.

- Double-click the camera icon ► the [DCIM] folder.
  - The [xxxCANON] folder is displayed. ("xxx" represents a number 100 to 999.)



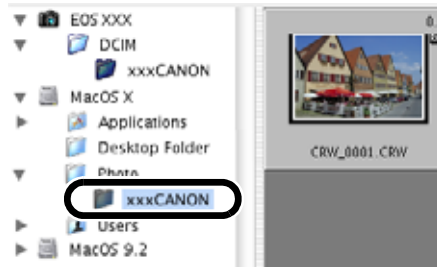
## 3 Copy the folder to the hard disk.

- Drag and drop the [xxxCANON] folder to the destination folder.
  - The [xxxCANON] folder is saved on your computer.



## 4 Click the copied folder.

- The images in the folder are displayed.
- Before disconnecting the camera from the computer, quit the EOS Viewer Utility, set the camera's power switch to <OFF>, and then disconnect the dedicated cable.



M

- ❗ ● You cannot display images in the preview window (M-22) or edit RAW images (M-31) saved on a memory card in the camera directly. Work with the images saved on your computer from the memory card.
- For displaying images saved in a third-party card reader, follow the same procedure to download the target folder to your computer.

## Supported Image Formats

The images below can be displayed with the EOS Viewer Utility.

Image Format	File Extension
RAW images taken with the EOS-1D Mark II and the EOS 20D	.CR2
RAW images taken with the EOS-1Ds and the EOS-1D	.TIF
RAW images taken with the EOS 10D, DIGITAL REBEL/300D DIGITAL, D60 and D30	.CRW
JPEG images conforming with the Exif 2.2, 2.21 standard*	.JPG/.JPEG
TIFF images conforming with the Exif standard*	.TIF/.TIFF

\* Includes TIFF and JPEG images converted from RAW images and saved with the EOS Viewer Utility.

- ❗ ● Images that cannot be displayed appear as a question mark [?].
  - The images that are processed on your computer after being shot or the images whose file name is changed may not be displayed properly.
  - You cannot use the camera while displaying images on the camera.
- 
- 📄 ● By setting [Auto rotate] setting to <ON> for the camera with this function, images shot in a vertical position are automatically displayed vertically.
  - If the selected folder contains a large number of images, there may be a short delay before the images appear.

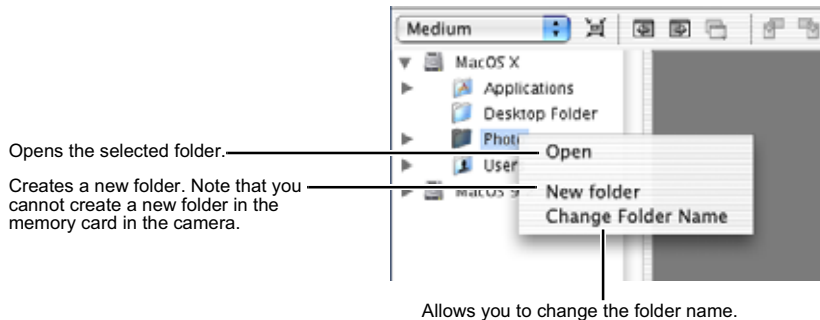
3

Working with Images in the EOS Viewer Utility

# Handling the Folders

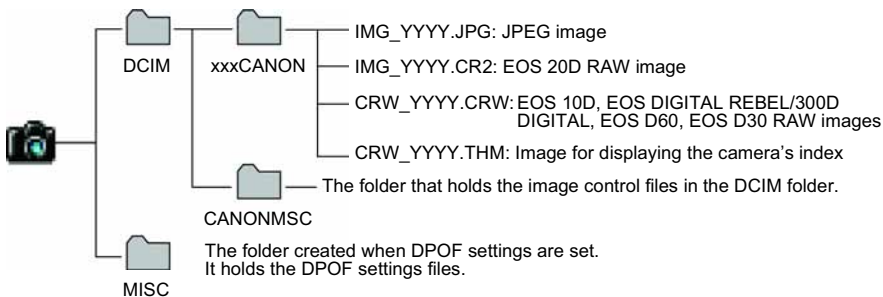
You can handle the folder on the menu that appears by clicking on the folder while holding down the <control> key.

**Click on the folder while holding down the <control> key, and then select an option from the menu that appears.**



You can drag and drop folders from the Tree View Area to the other folders.

## Memory Card Folder Structure and File Names



- The “xxx” in the folder names represent a number between 100 to 999.
- The “YYYY” in the file names represent a number between 0001 to 9999.



The file name of images shot with the EOS 20D is “\_MG\_” (the first character is an underscore) when Adobe RGB is set.



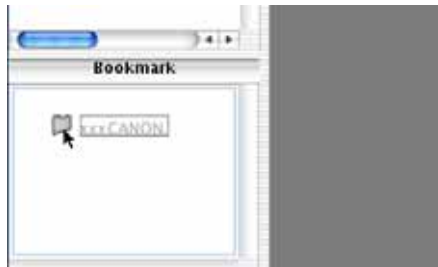
## Registering Frequent Use Folder

You can register frequent use folders as bookmark folders.

### 1 Display a folder to be registered (M-18).

### 2 Register a folder as a bookmark folder.

- Drag and drop the folder to be registered as shown on the right.
- The folder icon appears in the Bookmark area when it is registered.
- To delete the registered folder, click the folder while holding down the <control> key and select [Delete] from the menu that appears.



M



- You can also reorder the folders in the Bookmark area by dragging and dropping them.
- When you delete the registered folder, it just disappears from the Bookmark area. The actual data of the folder and the images in that folder will not be deleted.

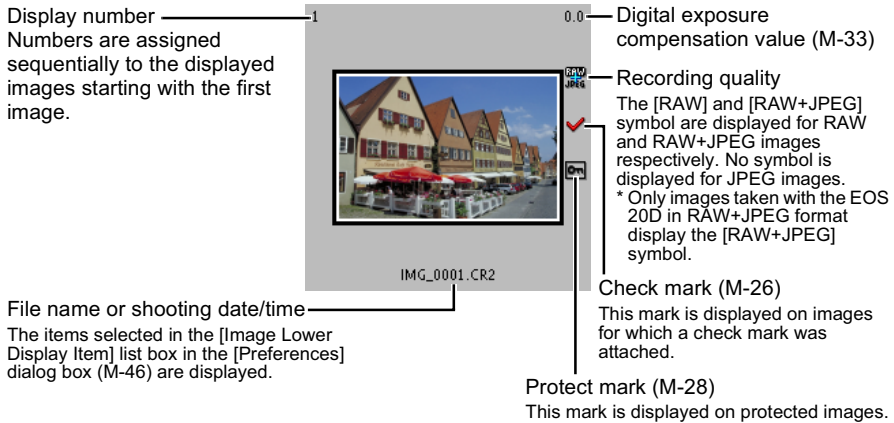
3

# Selecting the Image Display Mode

You can select the display size and method of images.

## Main Window (Thumbnail Display)

Various information can be displayed with images.



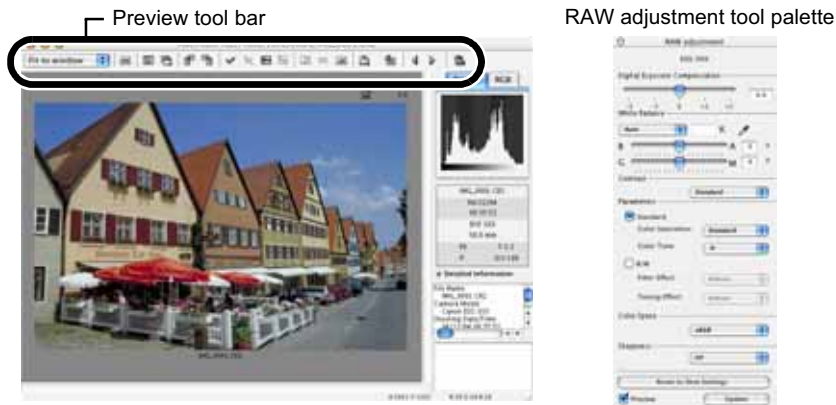
## Preview Window Display

Double-clicking an image displayed on the main window can enlarge the image.

When you change the processing parameters of RAW images, use this window.

- The preview window can display a maximum of six previews.
- A low resolution image is displayed first in the preview window, and then it changes to a high resolution image.

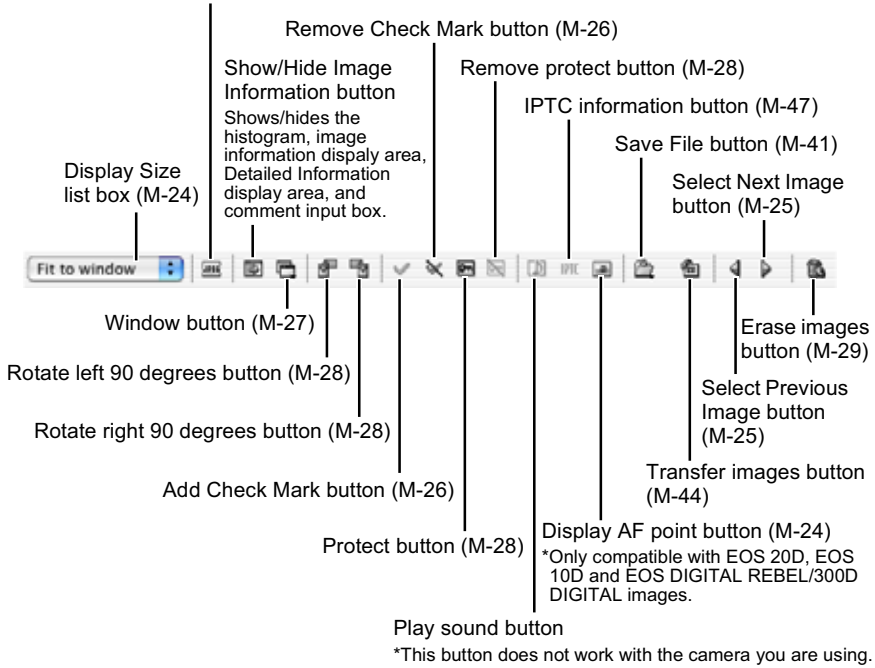
## Preview window



## Preview tool bar

### JPEG preview button

Changes the image displayed in the preview window to a RAW or JPEG image.  
 \*Only compatible with EOS 20D RAW+JPEG images and EOS 10D, EOS DIGITAL REBEL/300D DIGITAL and EOS D60 RAW images.



M

3

Working with Images in the EOS Viewer Utility

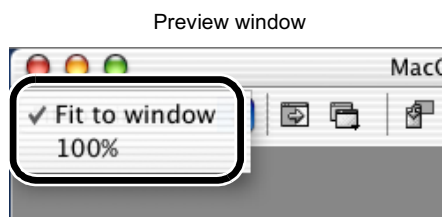
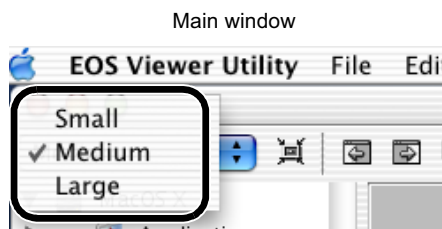
**!** You cannot display images in the preview window or edit RAW images (M-31) saved on a memory card in the camera directly. Work with the images saved on your computer from the memory card.

- For some images, it may take some time to change to the high resolution image.
- You can set the image displayed in the preview window to RAW image or the simultaneously recorded JPEG image (M-46).

## Selecting the Display Size

### Select a display size from the list box.

- In the main window, the available image sizes are [Small] (64 × 42 pixels), [Medium] (100 × 66 pixels), and [Large] (160 × 106 pixels).
- In the preview window, the available image sizes are [Fit to window] and [100%].
- When you select [100%], you can change the display position by dragging the image.



## Checking the AF Point

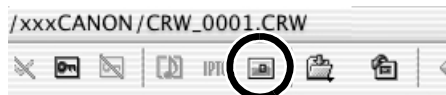
The AF point used when the shot was taken can be displayed.


- This function is only available with images of the EOS 20D, EOS 10D and EOS DIGITAL REBEL/300D DIGITAL.

**1** Display the image in the preview window (M-22).

**2** Click the [Display AF point] button.

- The AF point is displayed.
- Clicking the button again hides the AF point.



 When the shot was taken with automatic AF point selection, multiple active AF points might be displayed.

# Selecting Images

## Selecting Images in the Main Window

### Click the target image.

- The frame around the selected image is colored.
- To select multiple images, hold down the <shift> key and click the images.
- To select sequential images, click the first image and then hold down the <option> + <shift> keys and click the last image.



Alternatively, you can use the arrow keys (↑←→↓) on the keyboard to select images.

## Selecting Images in the Preview Window

### Click the target image.

- The selected image is displayed on the top window.



- When only one preview window is displayed, you can click the [Select Previous Image] button or the [Select Next Image] button to select the image to be displayed.



M

3

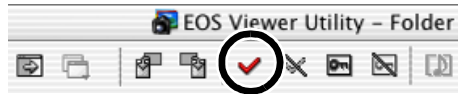
Working with Images in the EOS Viewer Utility

## Attaching Check Marks to Images

You can attach a check mark to the RAW image, allowing you to select images more easily.

### Click the [Add Check Mark] button.

→ When the check mark is placed, the [✓] icon appears in the frame of the image.



● Clicking the [Remove Check Mark] button removes the [✓] icon from the frame of the image, and erases the check mark.



⚠ You cannot attach the check mark for any images other than RAW images.

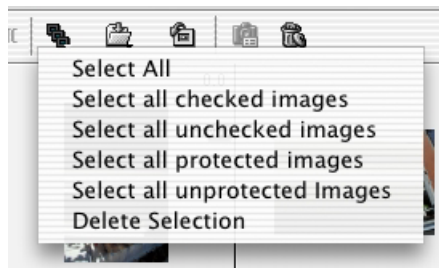
- When multiple RAW images are selected, the check mark is attached to all the selected RAW images.
- Alternatively, you can perform the same operation using the menu that appears by holding down the <control> key and clicking.

## Selecting Images by Condition

This feature allows you to select multiple images in a single operation using conditions.

### Click the [Select Image] button and select the condition from the menu that appears.

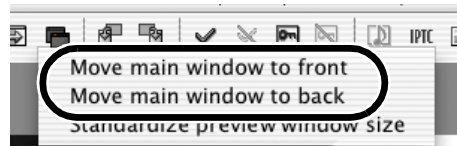
→ Only images that meet the condition are selected.



## Bringing/Sending the Main Window to the Front/Back of Window Stack

Select [Move main window to front] or [Move main window to back] from the menu that appears by clicking the [Window] button.

→ The main window is brought/sent to the front/back of window stack.



M

## Equalizing the Display Sizes of the Preview Window

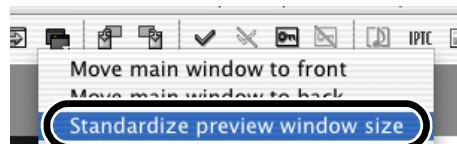
You can set all the preview windows to the same size.

**1** Select the image whose size is the desired size (M-25).



**2** Click [Standardize preview window size] from the menu that appears by clicking the [Window] button.

→ All the displayed preview windows are set to the same size as the selected image.



3

Working with Images in the EOS Viewer Utility

# Editing Images

You can edit all the images that can be displayed in the EOS Viewer Utility.



When multiple images are selected, the edits are applied to all the selected images.

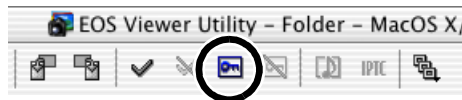
## Protecting Images

You can protect important images to prevent them from being accidentally deleted.

### Click the [protect] button.

→ When the image is protected, the [🔒] icon appears in the frame of the image.

- Clicking the [Remove protect] button removes the [🔒] icon from the frame of the image, and clears the protection.



- The [🔒] is automatically displayed for images that were protected on the camera.
- Protection only prevents images from being deleted. Other types of image operations can still be performed for protected images.
- Alternatively, you can perform the same operation using the menu that appears by holding down the <control> key and clicking.

## Rotating Images

You can rotate a selected image by 90-degree increments left or right.

### Click the [Rotate right 90 degrees] or [Rotate left 90 degrees] button.

→ The image rotates 90 degrees in the selected direction.



- By setting [Auto rotate] setting to <ON> for the camera with this function, images shot in a vertical position are automatically displayed vertically.
- If a rotated image is displayed in another application, the image may not appear rotated.
- Alternatively, you can perform the same operation using the menu that appears by holding down the <control> key and clicking.



## Deleting Images

You can move unnecessary images to the Trash on your computer and delete them.

### 1 Click the [Erase images] button.

→ The images are moved to the Trash.



### 2 Select the [Finder] menu on the desktop ► [Empty Trash].

- For OS 9, select the [Special] menu ► [Empty Trash].
- The images are deleted.

- Images that you deleted by selecting [Empty Trash] in step 2 cannot be restored. Check carefully before deleting images.
- Protect important images (M-28) to prevent them from being accidentally deleted.

Alternatively, you can perform the same operation using the menu that appears by holding down the <control> key and clicking.

## Checking the Image Information and Entering Comments

You can check the information recorded with images and input comments.

### Detailed Information display area

- The shooting information is displayed.
- The number of items displayed differs depending on the camera settings.
- You can copy the information as text data and paste it into another application.
- Clicking the [▼] button can hide the Detailed Information display area.



### Comment input box

You can use this box to type in a comment up to 120 characters long. Type in your comment and press the <return> key.

You cannot insert a hard return in the comment input box.

When multiple images are selected, the information from the image selected last is displayed.

M

3

Working with Images in the EOS Viewer Utility

# Printing Images

You can use the EOS Viewer Utility to print images in index format.

---

- 1** Select images to be printed in index format (M-25).
- 2** Select the [File] menu ► [Print Index].  
→ The Printer Setup dialog box appears.
- 3** Select the printer to be used, specify the print settings and print images.

# Editing RAW Images

You can specify the processing parameters for RAW images so that the RAW images are optimized for their intended purpose.

## Processing RAW Images

RAW images are processed based on the settings specified on the camera (including the processing parameters and white balance) and then displayed on the computer.

- When the following operations are performed, RAW images are processed and displayed:
  - When the preview window is switched from the main window
  - When the processing parameters are specified on the preview or main window
  - When the image is converted to the TIFF or JPEG format and saved
  - When the image is transferred to the specified retouching software

When the images are processed, it takes a while to display them.

- Approximate processing times

Operation Details Camera Model	Switching from the main window to the preview window	Transferring an image to the specified retouching software
EOS 20D	Approx. 5 sec.	Approx. 45 sec.
EOS 10D	Approx. 4 sec.	Approx. 35 sec.
EOS DIGITAL REBEL/ 300D DIGITAL	Approx. 4 sec.	Approx. 35 sec.
EOS D60	Approx. 4 sec.	Approx. 30 sec.
EOS D30	Approx. 4 sec.	Approx. 25 sec.

- **The processing times given here are only approximations. Actual processing times vary widely depending on the images and the computer system.**
- Processing times are based on Canon testing standards.  
(OS: OS X 10.2; CPU: Power PC G5 1.6 GHz; RAM: 256 MB)
- The processing time in the retouching software includes starting up time of the retouching software (when using Adobe Photoshop 7.0).



You cannot display images in the preview window (M-22) or edit RAW images saved on a memory card in the camera directly. Work with the images saved on your computer from the memory card.

## Specifying the Processing Parameters

You can specify the processing parameters in the RAW adjustment tool palette.

- This processing applies the specified parameters virtually and does not affect the original RAW images in any way. Consequently, you can redo the processing as often as you like with different parameters and then reset the modified parameters to the settings used when the shot was taken.
- Linear processing can be specified when an image is saved (M-41) or is transferred to retouching software (M-44).
- The procedure below is an operating method in the preview window, but you can set processing parameters with the same operation in the main window also. However, in the main window, you cannot click the [Preview] checkbox and the processing parameters you have set are immediately reflected in the image.

### 1 Display the RAW image in the preview window (M-22).

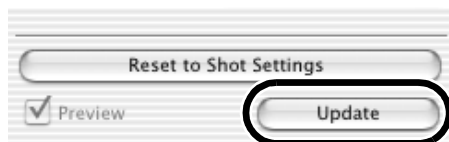
- If the RAW adjustment tool palette is hidden, select the [View] menu ► [Tool palette] to show it.

### 2 Specify the processing parameters (M-33 to M-40).

- Clicking the [Reset to Shot Settings] button restores the settings to the values used when the shot was taken.
- If you click the [Preview] checkbox, the specified processing parameters are applied to the RAW images

### 3 Click the [Update] button.

- The RAW images are processed according to the specified processing parameters.



### 4 Save (M-41) or transfer images (M-44).

- ⓘ The processing parameters set with the EOS Viewer Utility in the RAW images of a camera other than the EOS 20D are cancelled when you quit the EOS Viewer Utility, and are reset to the processing parameters for when shooting. Either convert the RAW image specified with the processing parameters to a TIFF or JPEG image and save (M-41), or transfer to retouching software (M-44) and save.

- 📄 When multiple images are selected in the main window, the specified processing parameters are applied to all the selected RAW images.

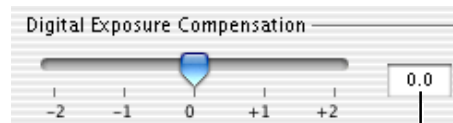
## Adjusting the Brightness (Digital Exposure Compensation)

You can adjust the brightness of an image in the range of  $\pm 2$  stops in 0.1-stop increments.

- This function is only available with RAW images of the EOS 20D, EOS 10D, EOS DIGITAL REBEL/300D DIGITAL and EOS D60.

**Drag the slider left or right to adjust the brightness.**

- The adjusted value is specified in the RAW adjustment tool palette.



Adjustment value set with the slider.

M

3

Working with Images in the EOS Viewer Utility

## Adjusting the White Balance

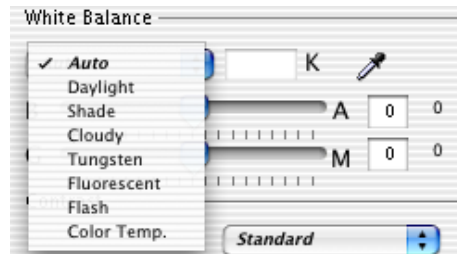
You can adjust the white balance in the images.

### Selecting the White Balance

You can select the white balance that is the closest to the light source when shots were taken.

#### Select the white balance from the list box.

- [Shade] and [Color Temp.] are not displayed for the EOS D60 and EOS D30 RAW images.



White Balance	Details	Color Temp. K (Kelvin)
Auto	Automatically adjusts the white balance.	Approx. 3000 to 7000
Daylight	For sunny daylight outdoors.	Approx. 5200*
Shade	For shaded areas outdoors.	Approx. 7000
Cloudy	For cloudy or hazy days and during sunset.	Approx. 6000
Tungsten	For tungsten (light bulb) light.	Approx. 3200
Fluorescent	For white fluorescent light.	Approx. 4000
Flash	When flash is used.	Approx. 6000
Color Temp.	You can manually set color temperature for 2800 to 10000K (in 100K increments) (M-35).	Approx. 2800 to 10000

\* Approximately 5500 with the EOS D30 RAW images.

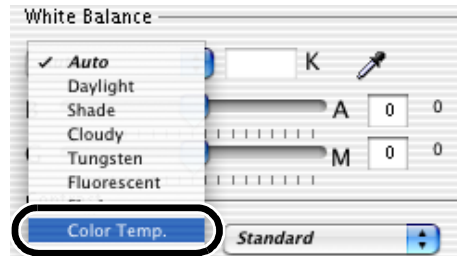
→ The selected white balance is specified in the RAW adjustment tool palette.

## Specifying the Color Temperature

You can specify the color temperature to adjust the white balance.

- This function is only available with RAW images of the EOS 20D, EOS 10D and EOS DIGITAL REBEL/300D DIGITAL.

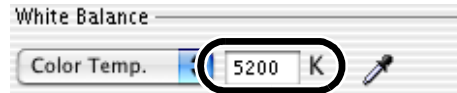
### 1 Select [Color Temp.] from the list box.



M

### 2 Enter a color temperature.

- Enter the color temperature in the [Color Temp.] input box in the range of 2800K to 10000K (in 100K increments).
- The entered color temperature is specified in the RAW adjustment tool palette.



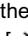

3

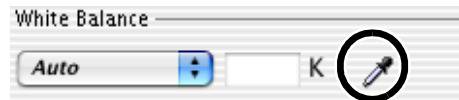
Working with Images in the EOS Viewer Utility

## Click White Balance Function

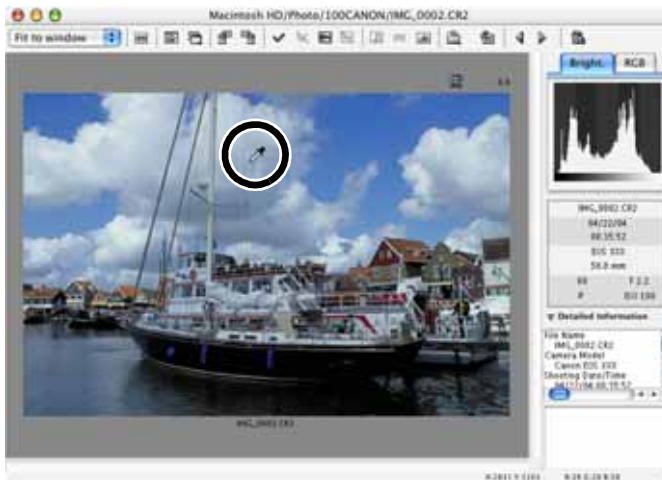
Makes white the standard for the part you have selected and automatically adjusts the white balance.

### 1 Click the [Click White Balance] button.

→ When you move the cursor over the image, the cursor [  ] changes to [  ].



### 2 Click the part where white is to be the standard.



→ The white balance is adjusted so that the point clicked appears white.

- When you use Click White Balance Function, even though you do not click the [Preview] checkbox, the adjusted white balance is applied to the images.
- When you use Click White Balance Function, [White Point] is displayed in the [White Balance] list box.
- You can adjust by selecting the neutral gray parts of the image.

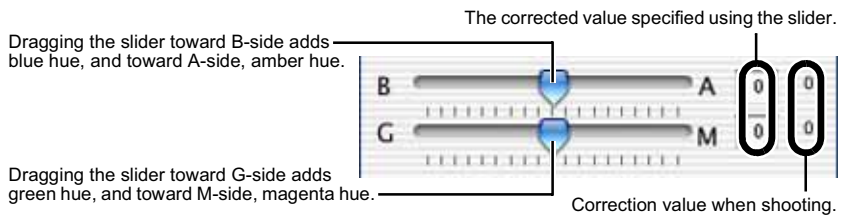


## Correcting the White Balance

You can correct the standard color temperature of the white balance. By using this function, you can obtain the effectiveness similar to the color temperature converting filter or color compensating filter (third-party product). The range of compensation is 9 levels for each color. This function is especially useful for users who understand the role and effect of the color temperature converting filter or color compensating filter.

- This function is only available with the EOS 20D RAW images.

### Drag the slider left and right to adjust the white balance.



- The corrected value is specified in the RAW adjustment tool palette.



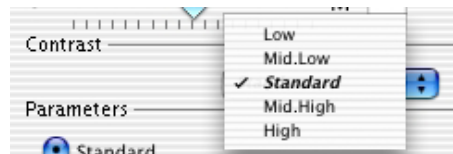
One level of blue/amber hue is equal to five mireds of the color temperature converting filter. (Mired: the unit of the density of the color temperature converting filter)

## Selecting the Contrast

You can adjust the contrast of an image.

### Select a setting from the list box.

- The selected setting is specified in the RAW adjustment tool palette.
- [Mid.Low] and [Mid.High] are not displayed for the EOS D60 and EOS D30 RAW images.



M

3

## Color Adjustment

Select the color adjustment options with the radio buttons to make each type of adjustment.

- **Selecting of color adjustment options is only available with EOS 20D RAW images.**

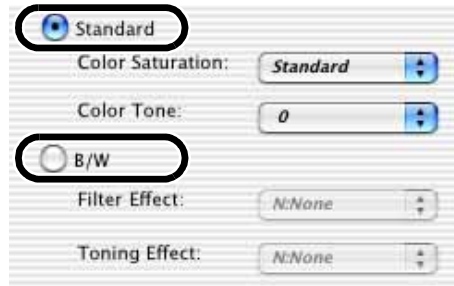
### Select the [Standard] radio button or the [B/W] radio button.

→ With the radio button you have selected, you can make the following color adjustments. Also, if you select [B/W], the image will become monochrome.

[Standard]: Color Saturation, Color Tone

[B/W]: Filter Effect, Toning Effect

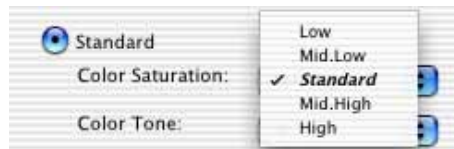
- See the section below for adjustment methods.



### Selecting the Color Saturation

#### Select a setting from the list box.

- The selected setting is specified in the RAW adjustment tool palette.
- [Mid.Low] and [Mid.High] are not displayed for the EOS D60 and EOS D30 RAW images.

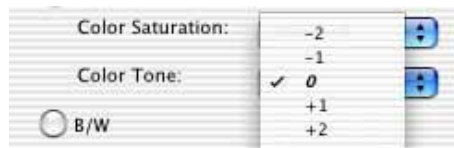


### Adjusting the Color Tone

- **This function is only available with the EOS 20D, EOS 10D, EOS DIGITAL REBEL/300D DIGITAL and EOS D60.**

#### Select a setting from the list box.

- The selected setting is specified in the RAW adjustment tool palette.
- The more negative the value, the redder the image becomes, and the more positive the value, the more yellow.
- [-2] and [+2] are not displayed for the EOS D60 RAW images.

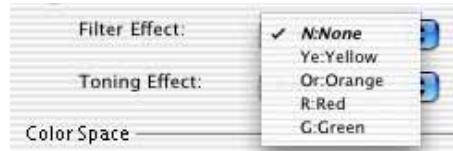


## Filter Effect

- This function is only available with EOS 20D RAW images.

### Select a setting from the list box.

- The selected setting is specified in the RAW adjustment tool palette.



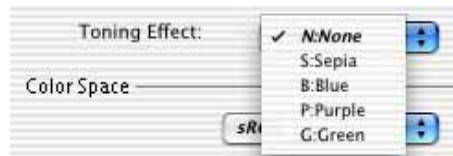
M

## Toning Effect

- This function is only available with EOS 20D RAW images.

### Select a setting from the list box.

- The selected setting is specified in the RAW adjustment tool palette.



3

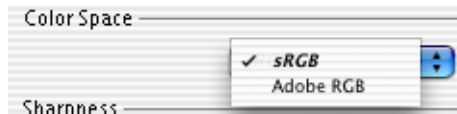
## Specifying the Color Space

You can set the color space of the images you have taken.

- This function is only available with RAW images of the EOS 20D, EOS 10D and EOS DIGITAL REBEL/300D DIGITAL.

### Select a setting from the list box.

→ The selected setting is specified in the RAW adjustment tool palette.



- The specified color space is recorded in the ICC profile attached to a TIFF image converted and saved from a RAW image (M-41).
- An ICC profile contains color information, such as color properties and color spaces of devices which are authorized by International Color Consortium (ICC). With this ICC profile, many color management systems can minimize the color differences between devices.

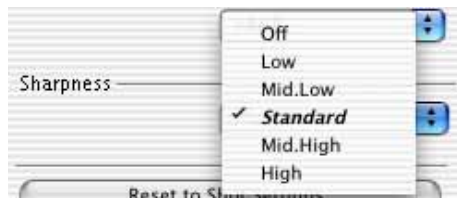
## Selecting the Sharpness

You can adjust the edge sharpness of an image.

### Select a setting from the list box.

- Higher values give higher levels of edge sharpening.
- [Mid.Low] and [Mid.High] are not displayed for the EOS D60 RAW images.
- [Off], [Mid.Low] and [Mid.High] are not displayed for the EOS D30 RAW images.

→ The selected setting is specified in the RAW adjustment tool palette.



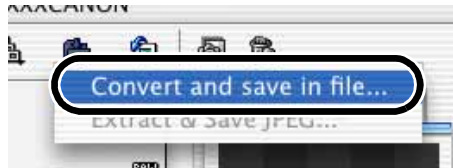
# Saving Images

You can convert and save RAW images to TIFF or JPEG images, and save JPEG images as another name. When you convert RAW images to the TIFF format and save them, the specified color space data (M-40) is attached to each of images as the ICC profile automatically.

**1** Select images to be saved (M-25).

**2** Click the [Save File] button and select [Convert and save in file] from the menu that appears.

→ The [Save File] dialog box appears.



**3** Specify the settings and click the [OK] button.

→ The images are saved in the selected folder.



Restores the settings to their original ones and closes the [Save File] dialog box.

Applies the settings and saves the image.



- When you convert RAW images to the TIFF images and save them, the ICC profile is attached to each of images automatically. An ICC profile contains color information, such as color properties and color spaces which are authorized by International Color Consortium (ICC). With this ICC profile, many color management systems can minimize the color differences between devices.
- Alternatively, you can perform the same operation using the menu that appears by holding down the <control> key and clicking.

M

3

Working with Images in the EOS Viewer Utility

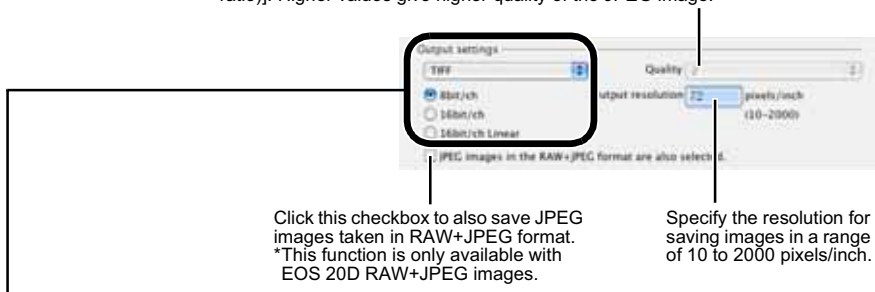
The image is saved as a new image in the same folder as the selected image.

Allows you to specify the folder in which the image will be saved.



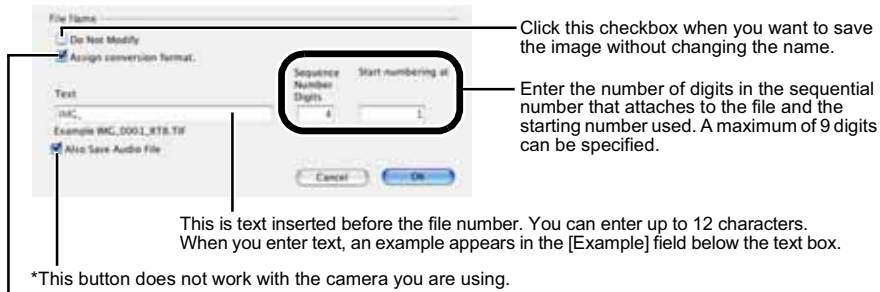
When the [Save in following specified folder] radio button has been selected, this button allows you to specify the folder in which the image will be saved. The name of the destination folder is displayed next to the [Browse] button.

Select a setting for [Quality] (compression ratio) when you have selected [JPEG] from the list box, from [4 (Highest image quality)] through [1 (High compression ratio)]. Higher values give higher quality of the JPEG image.



If some of the images to be saved are RAW images, select [Do not convert], [JPEG], or [TIFF] for the conversion format. If you select [TIFF], you can select the number of bits used when you save images from [8bit/ch], [16bit/ch] and [16bit/ch linear]. If you select [JPEG], the images are saved in the [8bit/ch] format. The extensions used for the saved files are shown below.

Conversion Format		Extension
Do not convert	EOS 20D	.CR2
	EOS 10D, EOS DIGITAL REBEL/300D DIGITAL, EOS D60, EOS D30	.CRW
JPEG (8bit/ch)		.JPG
TIFF (8bit/ch)		.TIF
TIFF (16bit/ch, 16bit/ch linear)		.TIF



Click this checkbox when saving the file after converting a RAW image to a JPEG image or TIFF image adds one of the following at the end of the file name.

Conversion Format	Conversion Format Name
JPEG	RJ
TIFF (8bit/ch)	RT8
TIFF (16bit/ch, 16bit/ch linear)	RT16, RT16L

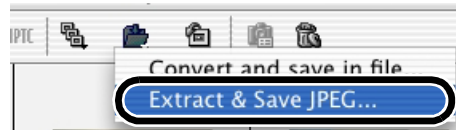
## Extracting JPEG Images from RAW Images

- A JPEG image simultaneously recorded with a RAW image can be extracted and saved.
- **This function is only available with RAW images of the EOS 10D, EOS DIGITAL REBEL/300D DIGITAL and EOS D60.**
- The EOS DIGITAL REBEL/300D DIGITAL and EOS D60 simultaneously record a Middle/Fine JPEG image and the EOS 10D simultaneously records the JPEG image set up in the camera.
- The contents that can be set are the same as [Save folder] and [File Name] of "Saving Images" (M-41).

**1** Select the RAW image from which a JPEG image is to be extracted (M-25).

**2** Click the [Save File] button and select [Extract & Save JPEG] from the menu that appears.

- The [Extract & Save JPEG] dialog box appears.



**3** Specify the desired settings and click the [OK] button.

- The JPEG image is saved in the selected folder.

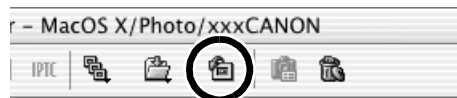
# Transferring Images to Retouching Software

You can transfer the images displayed in the EOS Viewer Utility to retouching software. The descriptions given here use Adobe Photoshop 7.0, as an example.

- In order to transfer images, you will need retouching software such as Adobe Photoshop.
- Be sure to specify the image transfer settings before transferring images.

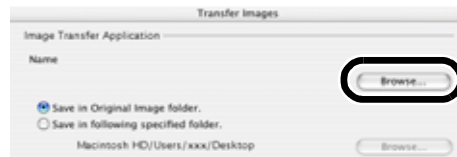
## 1 Click the [Transfer images] button.

→ The [Transfer Images] dialog box appears.



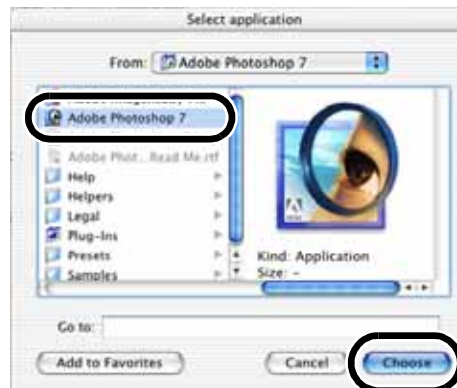
## 2 Click the [Browse] button.

→ The [Select application] dialog box appears.



## 3 Select the retouching software (Photoshop 7.0) to which the image will be transferred.

- Select the drive in which Photoshop 7.0 is installed ► [Applications] folder ► [Adobe Photoshop 7] folder ► [Adobe Photoshop 7]. Then click the [Choose] button.
- Photoshop is specified and the dialog box closes.





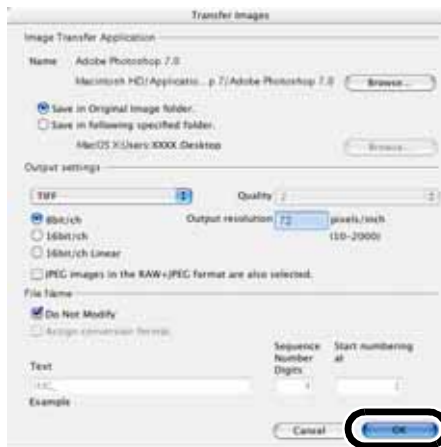
## 4 Select the radio button and then select a folder in which the images to be transferred will be saved.

The images to be transferred are saved as new images in the same folder.



Click the [Browse] button and then select a folder in which the images to be transferred will be saved.

## 5 Specify [Output settings] and [File Name] and then click the [OK] button.



- See “Saving Images” (M-41) for the procedure for specifying [Output settings] and [File Name].
- Photoshop starts up and displays the transferred images.
- The transferred images are saved in the folder that you have selected in step 4.



- It is recommended that you should use the retouching software (third-party product) that supports 16-bit images for the one to be specified for the transfer image function.
- When you convert RAW images to the TIFF format and save them, the specified color space data (M-40) is attached to each of the images as the ICC profile automatically.
- Alternatively, you can perform the same operation using the menu that appears by holding down the <control> key and clicking.

M

3

Working with Images in the EOS Viewer Utility

# Specifying the Preferences

You can specify the preferences for the EOS Viewer Utility.

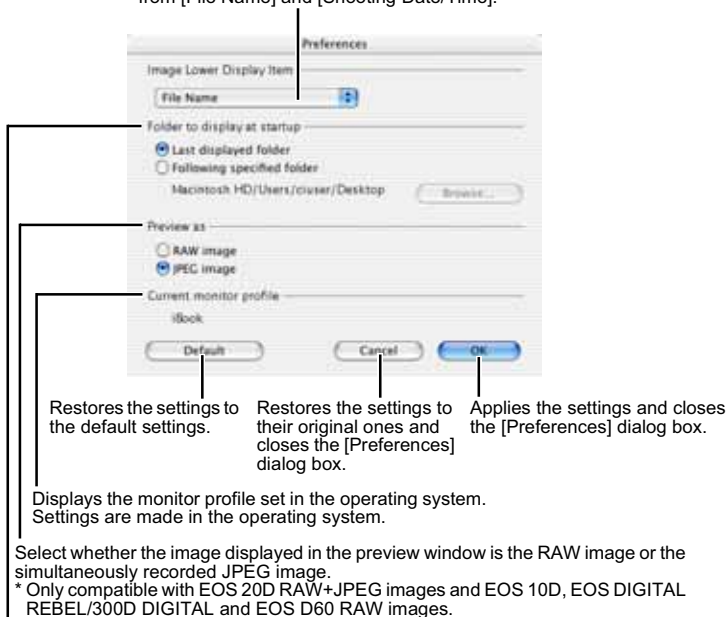
## 1 Select the [EOS Viewer Utility] menu ► [Preferences].

→ The [Preferences] dialog box appears.

## 2 Specify the settings and click the [OK] button.

→ The settings are applied and the [Preferences] dialog box closes.

Select the information to be displayed below images from [File Name] and [Shooting Date/Time].



Allows you to select whether the folder that was open the last time is displayed or the specified folder is always displayed when the EOS Viewer Utility starts up.



You can also select in the preview window whether the image displayed is the RAW image or the simultaneously recorded JPEG image (M-22).

# Setting the IPTC Information

IPTC stands for International Press Telecommunications Council and refers to a standard for communications and information exchange tags attached to images. The standard was established by newspaper and communications companies to allow problem-free transmission of images.

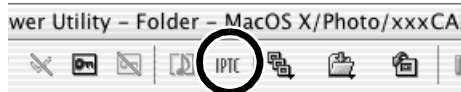
You can attach this IPTC information to JPEG images, or to TIFF and JPEG images that were converted from RAW images and saved with the EOS Viewer Utility. You can also save the IPTC information on your computer, and then load the saved information and apply it to other images.

## 1 Select a JPEG or a TIFF image (M-25).

M

## 2 Click the [IPTC information] button.

→ The [IPTC information] dialog box appears.



## 3 Enter information (M-48, M-49).

- Select any of [IPTC-1], [IPTC-2], or [IPTC-3] tab to display the tab sheet, and enter the information.
- The entered IPTC information can be saved on the dialog box that appears by clicking the [Save As] button.
- The saved IPTC information can be loaded on the dialog box that appears by clicking the [Read] button.

3

## 4 Click the [Save] button.

→ The specified IPTC information is applied to the image.

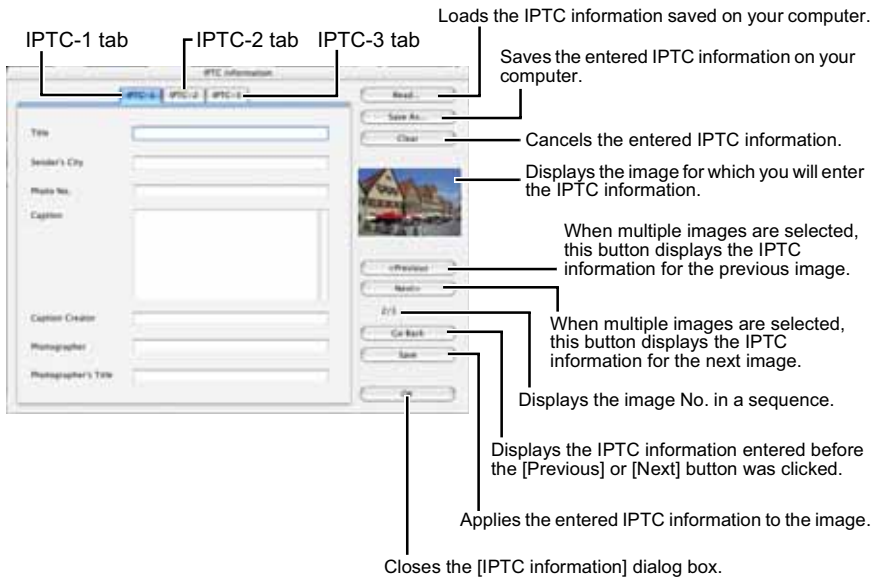
## 5 Click the [OK] button.

→ The [IPTC information] dialog box closes.

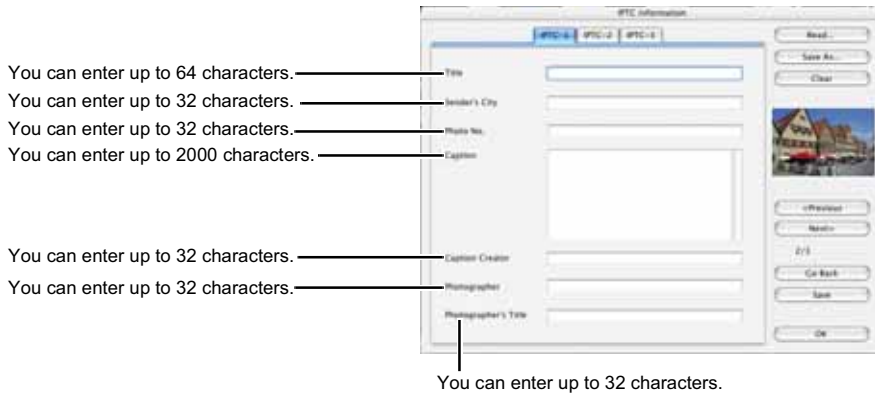


IPTC information settings data saved on your computer is compatible with the EOS Viewer Utility for both Windows and Macintosh.

## Setting the IPTC Information



## Settings on the [IPTC-1] tab sheet



## Settings on the [IPTC-2] tab sheet

You can enter up to 10 characters. — Service ID

Select [Highest Priority (=1)], [Normal (=5)], or [Low Priority (=8)] from the list box. — Priority

You can enter up to 256 characters. — Special instructions

You can enter up to 8 characters. — Shooting Date

You can enter up to 11 characters. — Shooting Time

You can enter up to 32 characters. — Media

M

## Settings on the [IPTC-3] tab sheet

You can enter up to 3 characters. — Category

You can enter up to 32 characters. — Sub-Category

You can enter up to 32 characters. — Keyword

You can enter up to 256 characters. — Subtitle

You can enter up to 32 characters. — Credits

You can enter up to 32 characters. — Original Owner

3

Working with Images in the EOS Viewer Utility

# Specifying the Camera Settings

You can specify the owner's name and date/time in the camera.

- This function is only compatible with the EOS Viewer Utility for OS X.
- 

- 1** Connect the camera to your computer (M-9).
- 2** Start up the EOS Viewer Utility (M-14).
- 3** Select the [Options] menu ► [Camera Settings].  
→ The [Camera settings] dialog box appears.

## 4 Specify the settings.

The screenshot shows the 'Camera settings' dialog box with the following fields and buttons:

- Camera model:** EOS XXX (highlighted with a black box)
- Body ID:** 000000000
- Firmware version:** 1.0.0
- Owner's name:** (empty text field)
- Date and time:** 4/27/04 4:15 PM (with 'From PC' button)
- Battery status:** (battery icon)
- Memory card size:** (highlighted with a black box)
  - Status: Installed
  - Free: 218.19 MB
  - Total: 243.70 MB
  - Buttons: Cancel, Format, Ok

Callouts from the image:

- Enter the name of a camera owner. You can enter up to 31 characters. (points to Owner's name)
- Enter a value or click the [▲]/[▼] buttons to specify the date and time. (points to Date and time)
- This box shows the camera model, body ID (serial number) and firmware version. (points to Camera model, Body ID, Firmware version)
- Imports the date and time from your computer. (points to From PC button)
- The battery level of the camera is indicated by [▲] or [▼]. When you are using the AC Adapter Kit (optional) or DC Coupler, [🔌] is displayed. (points to Battery status)
- This box shows whether a memory card is loaded in the camera along with the available space on the card and its total capacity. You can also initialize the memory card by clicking the [Format] button. (points to Memory card size section)
- Restores the parameters to their original ones and closes the [Camera settings] dialog box. (points to Cancel button)
- Applies the settings that you have specified to the camera and closes the [Camera settings] dialog box. (points to Ok button)

- With the EOS D30, the [Parameters] button is displayed. For details on [Parameters], refer to the Software Instruction Manual supplied with your camera.

## 5 Click the [OK] button.

→ The settings are applied and the [Camera settings] dialog box closes.

**⚠** Formatting a memory card deletes all the data on the card. Because formatting also deletes protected images, you should check the data recorded on the card carefully before proceeding.

M

3

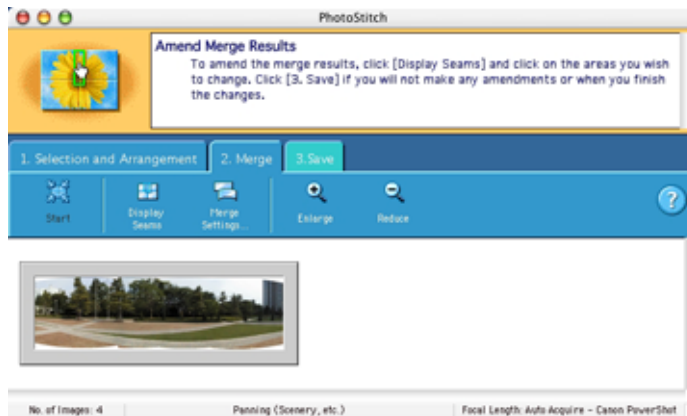
# Merging Images with the PhotoStitch

You can merge multiple JPEG images to create a panorama shot.

- 1 Double-click the [Canon Utilities] folder ► the [PhotoStitch] folder ► the [PhotoStitch Launcher] icon.  
→ [PhotoStitch Launcher] appears.
- 2 Click the [Merge Images] button.



- The PhotoStitch starts up.
- Follow the instructions in the guidance window to merge the images.
  - Refer to the PhotoStitch Help menu for more details.



- You cannot merge RAW images in the PhotoStitch.
- Up to four images can be merged using the PhotoStitch.



# Remote Shooting in the EOS Capture

# 4

This chapter describes how to use the EOS Capture for taking shots and specifying the camera settings remotely from your computer.

For more information on the restrictions of the EOS Capture, refer also to the source listed below.

Readme: Double-click the [Canon Utilities] folder ► the [EOS Capture] folder ► [ReadMe].

- Remote shooting in the EOS Capture is only available with the EOS 20D.
- The EOS Capture is only compatible with OS X.

---

<b>Starting the EOS Capture</b> .....	<b>M-54</b>
<b>Remote Shooting</b> .....	<b>M-56</b>
Single-frame Shooting .....	M-56
Timer Shooting .....	M-57
Interval Timer Shooting .....	M-58
<b>Specifying the Camera Settings</b> .....	<b>M-59</b>
Camera Settings .....	M-59
White Balance Adjustment .....	M-61
Specifying the Save Destination.....	M-62

# Starting the EOS Capture

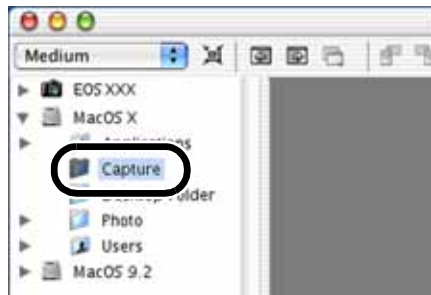
- Remote shooting in the EOS Capture is only available with the EOS 20D.
- The EOS Capture is only compatible with OS X.

**1** Connect the camera to your computer (M-9).

**2** Start up the EOS Viewer Utility (M-14).

**3** Select the folder to save the image in.

- Select a folder in the Tree View Area to save the image in, or create a new folder (M-18). (The [Capture] folder is created here as an example.)

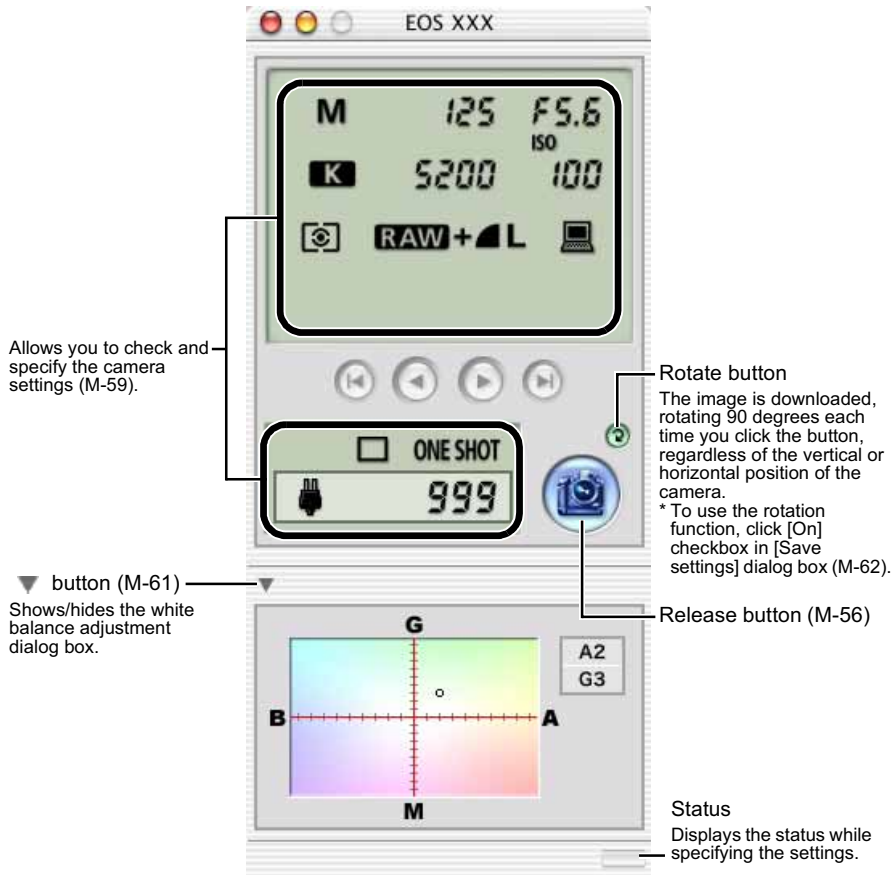


**4** Click the [EOS Capture] button.

- The EOS Capture main window appears.



## EOS Capture main window



M

4

Remote Shooting in the EOS Capture

### 5 Click the [Release] button to take a shot (M-56).

- If you quit the EOS Capture, select the [EOS Capture] menu ► [Quit EOS Capture].



The EOS Capture operates in conjunction with the EOS Viewer Utility. Therefore, when you quit the EOS Viewer Utility, the EOS Capture also quits.

# Remote Shooting

You can control the camera from your computer and take single-frame shots, timer shots and interval timer shots. The images are automatically saved on your computer.

## Single-frame Shooting

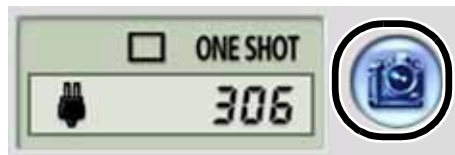
**1** Set the camera up ready to shoot.

**2** Make various settings.

- See “Camera Settings” (M-59) and “White Balance Adjustment” (M-61) for information on how to specify the camera settings.
- See “Specifying the Save Destination” (M-62) for information on how to specify the settings for saving images.

**3** Click the [Release] button.

- The shot images are displayed in the EOS Viewer Utility and saved in your computer automatically.



**!** Before you use the Remote Shooting function, be sure to check that the camera is ready for shooting. If the camera is not ready for shooting (the lens is not attached, etc.), you cannot perform the operation as explained.

**!** Alternatively, you can press the space bar to shoot.

## Approximate Transfer Time for Shooting RAW Images

EOS 20D

Approx. 5 seconds

- The transfer time given here is only an approximation. Actual transfer time varies widely depending on the images and the computer system.
- The time for images shot in JPEG format will be shorter than those shown above.
- Transfer time is based on Canon testing standards.

(Time until images appear in the EOS Viewer Utility main window after you uncheck the [Save also on the camera's memory card] checkbox and click the [Release] button in the EOS Capture main window using the following: OS: OS X 10.2; CPU: Power PC G5 1.6 GHz; RAM: 256 MB)



When the camera is set to One Shot AF, you cannot take shots if the camera cannot focus. If you cannot take shots with the auto focusing, focus manually and then take a shot.



The number of available shots changes depending on the available capacity on your computer's hard disk. You can check the number of available shots with the [Shots to Go] (M-59).

M

## Timer Shooting

1

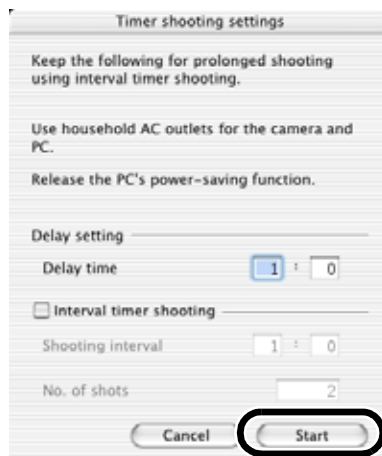
Select the [Tool] menu ► [Timer shooting].

→ The [Timer shooting settings] dialog box appears.

2

Enter a delay time and click the [Start] button.

- You can set a value between 0 seconds and 99 minutes 59 seconds in 1-second increments.
- Timer shooting shots are taken.



4

Remote Shooting in the EOS Capture

## Interval Timer Shooting

### 1 Select the [Tool] menu ► [Timer shooting].

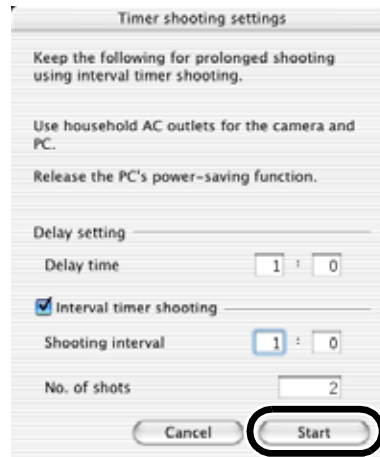
→ The [Timer shooting settings] dialog box appears.

### 2 Click the [Interval timer shooting] checkbox.



### 3 Enter the shooting interval and the number of shots. Then click the [Start] button.

- You can set a shooting interval between 5 seconds and 99 minutes 59 seconds in 1-second increments.
  - You can set up to a maximum of 1999 shots.
- Interval timer shooting is performed using the specified interval between shots and the specified number of shots.



⚠ On some types of computers, if you set a short interval between shots and there is insufficient time to download and save the images, it may not be possible to take shots at the specified interval. If this occurs, set a longer interval between shots and take the shots again.

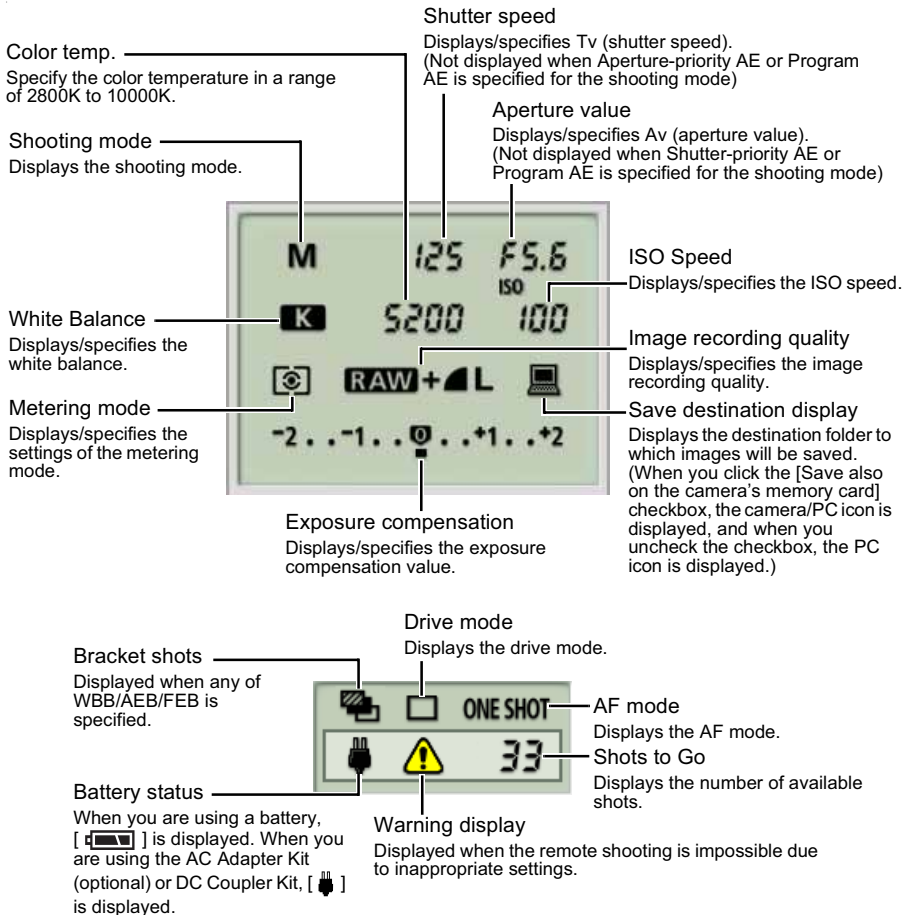
# Specifying the Camera Settings

You can check and change the settings in the camera from your computer remotely.

## Camera Settings

You can check and specify the camera settings.

### 1 Check the camera settings.



\* The above window shows all the information at once. In actual use, only the information needed is displayed.

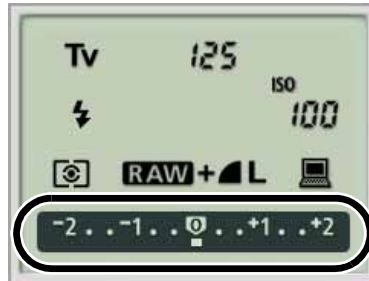
M

4

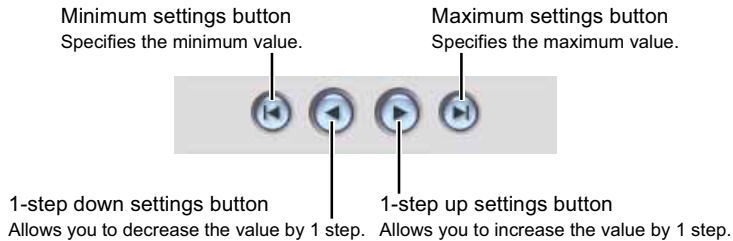
Remote Shooting in the EOS Capture

## 2 Click the icon.

- The icon displayed here shows exposure compensation as an example.



## 3 Use the button to change a value.



→ The changed settings are applied to the camera.

- Before you specify the settings, be sure to check that the camera is ready for shooting. If the camera is not ready for shooting (the lens is not attached, etc.), you cannot make some of the settings.
- Set functions which you cannot set with EOS Capture (drive mode, AF mode etc.) in the camera.

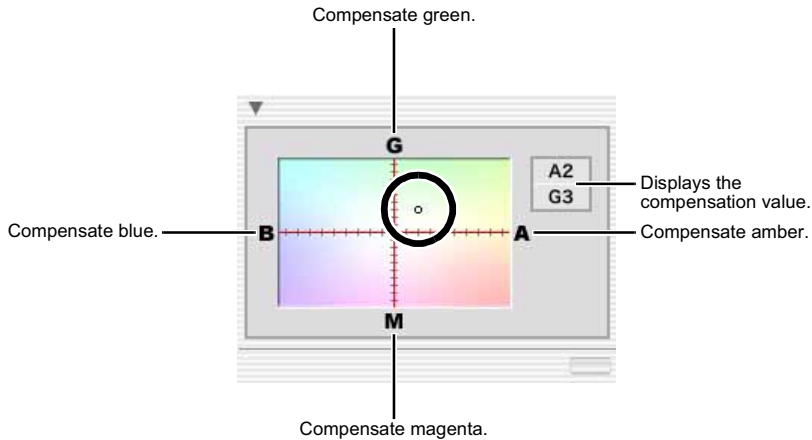


## White Balance Adjustment

You can compensate white balance with the blue/amber/green/magenta digital filter.

- If the dialog box has not appeared, click the [▶] button.

### Click the compensation position.



- The changed settings are applied to the camera.

M

4

## Specifying the Save Destination

You can specify save destination files and file names.

**1** Select the [File] menu ► [Save destination setting].  
→ The [Save settings] dialog box appears.

**2** Specify desired settings and click the [OK] button.

### Save settings dialog box

Clicking the checkbox also saves images on the memory card in the camera.

Allows you to change the destination folder to which images will be saved. The name of the destination folder is displayed next to the [Browse] button.



Use this field to enter a file name when saving an image. The file name can consist of up to 18 characters.

Enter a sequential number with a range of 0000 to 9999 that is added to the end of the file name.

Applies the settings and closes the [Save settings] dialog box.

Cancels all the settings, and restores the settings to their original ones.

Click the checkbox to enable use of the rotation function (M-55).

# Troubleshooting and Uninstallation

# 5

This chapter provides troubleshooting and describes the software uninstallation procedures.

---

<b>Troubleshooting</b> .....	<b>M-64</b>
<b>Uninstalling the Software</b> .....	<b>M-66</b>
<b>Index</b> .....	<b>M-67</b>

# Troubleshooting

When the “Communication between the camera and computer failed” or “Software not running correctly” message appears, check the items described below.

## I have installed the software but the camera and computer cannot communicate.

- **Does your computer comply with these requirements?**
  - A Macintosh with a USB connector as a standard feature.
    - \* Operation is not guaranteed when the camera is connected to an interface that is not a standard feature of Macintosh.
- **Are the camera and computer connected correctly?**
  - Connect the camera to your computer correctly using the dedicated cable (M-9).
- **Is the correct communication mode selected on the camera?**
  - When using the EOS 20D, EOS 10D and EOS DIGITAL REBEL/300D DIGITAL, set the camera's communication mode to [Normal] (M-8). With the EOS 10D, you must also change the firmware to version 2.0.0 or later. For details on changing, see the Canon website.
- **Is there sufficient charge left in the camera battery?**
  - Your computer does not supply power to the camera. With the EOS 20D, EOS 10D and EOS DIGITAL REBEL/300D DIGITAL, connect to the camera with an AC Adapter Kit (optional). With the EOS D60 and EOS D30, connect to the camera with the DC Coupler supplied. Or, load a fully charged battery into the camera before connecting it to your computer.
- **Do you have more than one camera connected to your computer?**

If you connect more than one camera to the same computer, the driver and camera may not operate normally.

  - Quit the software and disconnect all the dedicated cables. Then connect only one camera to the same computer again.
- **Are you using a first-generation iMac without having updated the firmware?**
  - Update the firmware using the iMac Firmware Update.
    - Download the iMac Firmware Update from the Apple website.

## The software doesn't run properly or doesn't run at all.

### ● Is the preferences file for the software corrupted?

→ The preferences file for your software may be damaged.

Quit all active programs, delete the [Canon CameraCom Pref] file and the preference files for the software you are using from the [Preferences] folder, and then restart the software.

For OS X, double-click the startup disk ► click the [Home] button ► double-click the [Library] folder ► [Preferences] to open the [Preferences] folder and delete the target preference files.

For OS 9, double-click the startup disk ► the [System Folder] ► the [Preferences] folder to open the [Preferences] folder and then delete the target preference files.

- EOS CameraCom Pref      Preferences file shared by all software programs for communications (OS X only)
- CanonEOSViewerUtility Pref      Preferences file for the EOS Viewer Utility
- EOS Viewer Utility.plist
- com.canon.EOS Capture.plist      Preferences file for the EOS Capture (OS X only)
- PhotoStitch Pref      Preferences file for the PhotoStitch

M

5

Troubleshooting and Uninstallation

# Uninstalling the Software

The following explanation uses the procedures for uninstalling the EOS Viewer Utility as an example for uninstalling other programs as well.

- The software uninstallation procedure is the same for both OS X and OS 9.
- Before beginning the software uninstallation, quit all programs you are using and disconnect the dedicated cable from your computer.
- When you have moved the folders and the software to be deleted to the Trash, select [Empty Trash] from the [Finder] menu (For OS 9, select [Empty Trash] from the [Special] menu.) and empty the Trash. You cannot reinstall the software until you have emptied the Trash.

## 1 Display the folder in which the software is saved.

- Open the [Canon Utilities] folder.



## 2 Drag the folder for the software to be uninstalled to the Trash.

## 3 Select the [Finder] menu on the desktop ► [Empty Trash].

- For OS 9, select the [Special] menu ► [Empty Trash].
  - The software is deleted.
- When uninstallation ends, restart your computer.

⚠ You cannot retrieve data which you have moved to the Trash and deleted. Be particularly careful when deleting data.

# Index

## A

- About the PTP Setting ..... M-8
- Adjusting the White Balance
  - Click White Balance Function ..... M-36
  - Correcting the White Balance ..... M-37
  - Selecting the White Balance ..... M-34
  - Specifying the Color Temperature .... M-35
- Attaching Check Marks to Images ..... M-26

## C

- Camera Settings
  - Intializing the memory card ..... M-51
  - Specifying the Date and Time ..... M-51
  - Specifying the Owner's Name ..... M-51
- Checking the AF Point ..... M-24
- Checking the Image Information and Entering Comments ..... M-29
- Color Adjustment
  - Adjusting the Color Tone ..... M-38
  - Filter Effect ..... M-39
  - Selecting the Color Saturation ..... M-38
  - Toning Effect ..... M-39
- Connecting the Camera to Your Computer ..... M-9

## D

- Deleting Images ..... M-29
- Digital Exposure Compensation ..... M-33
- Downloading Images ..... M-18
- Downloading JPEG Images Using the PTP Function in OS X (10.1 or later) ..... M-12

## E

- Editing Images ..... M-28
- Editing RAW Images ..... M-31
- EOS Capture Main Window ..... M-55
- EOS Viewer Utility Main Window ..... M-15
- Extracting JPEG Images from RAW Images ..... M-43

## I

- ICC Profile ..... M-40, M-41

- Installing the Software ..... M-4

## M

- Main Functions of the Software ..... 4
- Merging Images with the PhotoStitch .... M-52

## O

- Operation Flow ..... 5

## P

- Preview Window ..... M-22
- Printing Images ..... M-30
- Processing RAW Images ..... M-31
- Protecting Images ..... M-28

## R

- RAW Adjustment Tool Palette ..... M-17
- Remote Shooting
  - Interval Timer Shooting ..... M-58
  - Single-frame Shooting ..... M-56
  - Timer Shooting ..... M-57
- Rotating Images ..... M-28

## S


- Saving Images ..... M-41
- Selecting Images
  - Selecting Images in the Main Window ..... M-25
  - Selecting Images in the Preview Window ..... M-25
- Selecting Images by Condition ..... M-26
- Selecting the Contrast ..... M-37
- Selecting the Display Size ..... M-24
- Selecting the Sharpness ..... M-40
- Setting the Communication Mode ..... M-8
- Setting the IPTC Information ..... M-47
- Specifying the Camera Settings (EOS Capture)
  - Camera Settings ..... M-59
  - Save Settings ..... M-62
  - White Balance Adjustment ..... M-61
- Specifying the Color Space ..... M-40
- Specifying the Preferences ..... M-46

M-67

M

5

Troubleshooting and Uninstallation



Specifying the Processing Parameters	M-32
Starting the EOS Capture	M-54
Starting the EOS Viewer Utility	M-14
Supported Image Formats	M-19
System Requirements	M-2

## **T**

Thumbnail Display	M-22
Transferring Images to Retouching Software	M-44
Troubleshooting	M-64

## **U**

Uninstalling the Software	M-66
---------------------------	------





# Canon

**CANON INC.** 30-2, Shimomaruko 3-chome, Ohta-ku, Tokyo 146-8501, Japan

**U.S.A. ————— CANON U.S.A., INC.**

For all inquiries concerning this camera, call toll free in the U.S.  
1-800-OK-CANON or write to: Customer Relations, Canon U.S.A., Inc.  
One Canon Plaza, Lake Success, N.Y. 11042-1198

**CANADA ————— CANON CANADA INC. HEADQUARTERS**

6390 Dixie Road, Mississauga, Ontario L5T 1P7, Canada

**CANON CANADA INC. MONTREAL BRANCH**

5990, Côte-de-Liesse, Montréal Québec H4T 1V7, Canada

**CANON CANADA INC. CALGARY OFFICE**

2828, 16th Street, N.E. Calgary, Alberta T2E 7K7, Canada

For all inquiries concerning this camera, call toll free in Canada  
1-800-OK-CANON

**EUROPE, ————— CANON EUROPA N.V.**

**AFRICA &**

**MIDDLE EAST**

Bovenkerkerweg 59-61, P.O. Box 2262, 1180 EG Amstelveen,  
The Netherlands

**CANON COMMUNICATION & IMAGE FRANCE S.A.**

102, Avenue du Général de Gaulle 92257

La Garenne-Colombes Cedex, France

**CANON UK LTD.**

Woodhatch Reigate Surrey RH2 8BF, United Kingdom

**CANON DEUTSCHLAND GmbH**

Europark Fichtenhain A10, 47807 Krefeld, Germany

**CANON ITALIA S.p.A.**

Via Milano 8 I-20097 San Donato Milanese, Milano, Italy

**CANON Schweiz AG**

Geschäftsbereich Wiederverkauf, Industriestrasse 12,

CH-8305 Dietlikon, Switzerland

**CANON G. m. b. H.**

Oberlaaerstrasse 233, 4th floor, 1100 Wien, Austria

**CANON España, S. A.**

C/Joaquín Costa, 41, 28002 Madrid, Spain

**SEQUE Soc. Nac. de Equip., Lda.,**

Praça da Alegria, 58, 2º, 1269-149 Lisboa, Portugal

**CENTRAL & ————— CANON LATIN AMERICA, INC. DEPTO DE VENTAS**

**SOUTH AMERICA**

703 Waterford Way Suite 400 Miami, FL 33126 U.S.A.

**CANON LATIN AMERICA, INC. CENTRO DE SERVICIO Y REPARACION**

Apartado 2019, Zona Libre de Colón, República de Panamá

**ASIA ————— CANON HONGKONG CO., LTD.**

9/F, The Hong Kong Club Building, 3A Chater Road, Central, Hong Kong

**CANON SINGAPORE PTE. LTD.**

79 Anson Road #09-01/06 Singapore 079906

**OCEANIA ————— CANON AUSTRALIA PTY. LTD.**

1 Thomas Holt Drive, North Ryde, N.S.W. 2113, Australia

**CANON NEW ZEALAND LTD.**

Akoranga Business Park, Akoranga Drive, Northcote, Auckland, New Zealand

**JAPAN ————— CANON SALES CO., INC.**

16-6, Kohnan 2-chome, Minato-ku, Tokyo 108-8011, Japan

- This Instructions booklet is current as of August 2004. For information on using the camera with system accessories introduced after this date, contact your nearest Canon Service Center.
- The camera's specifications and physical appearance are subject to change without notice.
- There may be small changes to screens and differences in wording of the software in this manual.